



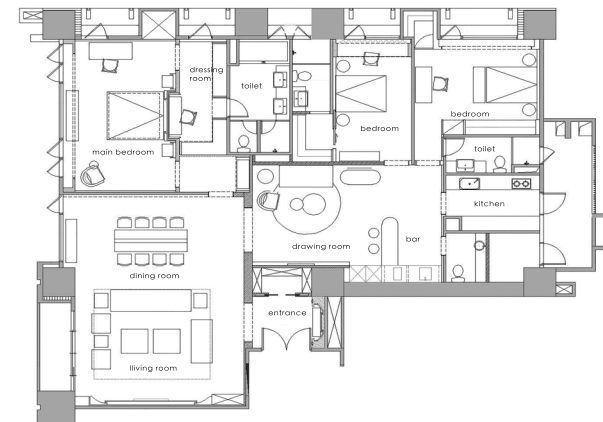
New
Style
Oriental

形色躍然 Jumping state

形與色，是表層跳躍至內在紋理的接引點。居家風格是生活美學的總和呈現。在台灣，在東方文化的洗禮下，我們內在隱含著對東方深邃美學的憧憬，那是一草一木，一桌一椅，幡然羅列而出的色彩與比例，內化成思維與心靈上的感動，外顯於生活場景。

Shape and color are the points of convergence from the surface to the intrinsic texture. The use of color is so dramatic because customers have high expectations for our breakthrough in innovation in the New Oriental elements. Unlike the traditional Chinese style, the color scheme is slightly dull, and customers strongly demand that the design of the New Oriental home can be made.

floor plan



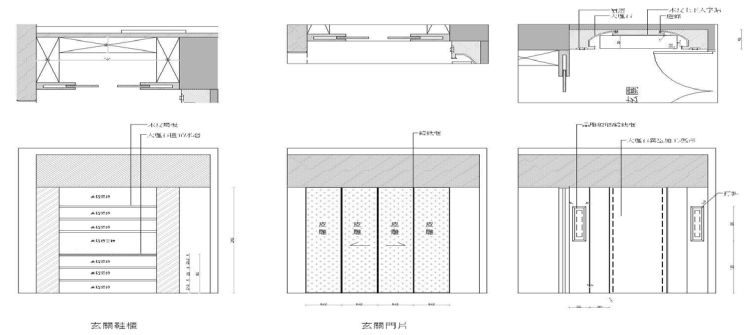
New
Oriental
Style

主要客廳區域，使用了白色圖騰的深藍色地毯，在此空間，地毯扮演著安定所有家具以及佈置品的重要角色，材質色彩多樣化的裝飾品與家具融為一體。以金色金屬作為這個空間以及細部的結尾，帶出華麗新東方韻味。



第二起居空間，基底使用藍色做延續貫穿，在天花板做出穹頂，為這個長型機能較為零散的空間找出一個焦點，安定此空間。而穹頂上鈦金板的設計，則是試圖凝煉新東方內斂的華麗。





entrance

自古以來牡丹代表著東方華麗的象徵，在入口的玄關有著皮革雕刻所包覆的牡丹花作為主牆的入口玄關意象。





New
Style
Oriental



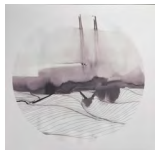


oriental

本案將色彩使用得如此戲劇化，是因為我們對新東方元素的嶄新演出有著高度期待，有別於一般傳統的中國風色彩計劃略微沉悶，更在客戶強烈要求下，希望新東方家居設計風格能夠使前來參觀的貴賓感到驚艷。

The use of color is so dramatic because customers have high expectations for our breakthrough in innovation in the New Oriental elements. Unlike the traditional Chinese style, the color scheme is slightly dull, and customers strongly demand that the design of the New Oriental home can be made. The VIPs who came to visit, it was amazing to see the eyes, and then look at the second eye is still shocking for such avant-garde techniques and for a long time unforgettable!

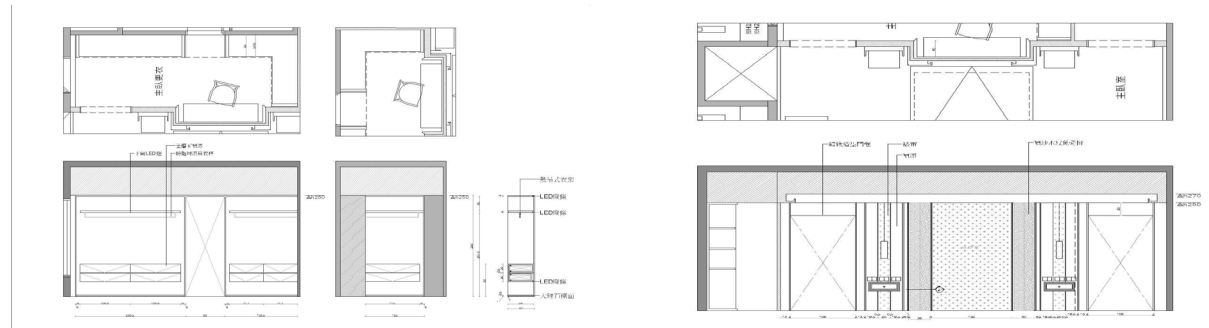
accessory



In the master bathroom, the elements of Modern Oriental was demonstrated through the beauty of Chinese traditional curve lines. The emperor orange color was utilized as the matching color here. Color of royal blue persisted in applying bedroom's furniture. The curved lines of the bed stand implied the shape of traditional Chinese building eaves. Also, chandelier ingeniously matched the outline of the window grille. All in all, this beautiful master bedroom presented a modern and elegant Chinese charm of an imperial atmosphere.

主臥室使用帝王橘紅色作為色彩搭配，寢具則把寶藍色延續帶入，在床頭的弧度線條，是帶入了中國傳統建築屋簷的造型，吊燈的搭配也採用窗花的輪廓，擷取中國傳統美麗的線條與鮮艷且內聚的色彩，兩者相融無遺，使主臥室呈現帝王般的氣質與韻味。

main bedroom
elevation





次臥室亦使用色彩做出區隔，在藍色床頭的房間寢具使用青花瓷的刺繡。另一間房，床頭上方掛上銀色佛像，配上同色系的竹節壁燈，清麗而莊嚴，讓此空間貫徹新東方風格，從其深厚的底蘊下，竄出活力、朝氣而不失穩重。

sub bedroom

elevation

