

京 硯
COCY-
The cornerstone of the city



COCY - The cornerstone of the city

LOCATION AND SUMMARY



京硯

COCY-The cornerstone of the city

高雄市鼓山區神農路與南屏路交叉口
Shennong Rd., Gushan Dist., Kaohsiung City
804, Taiwan (R.O.C.)

用途：住宅空間
Category：Residential space

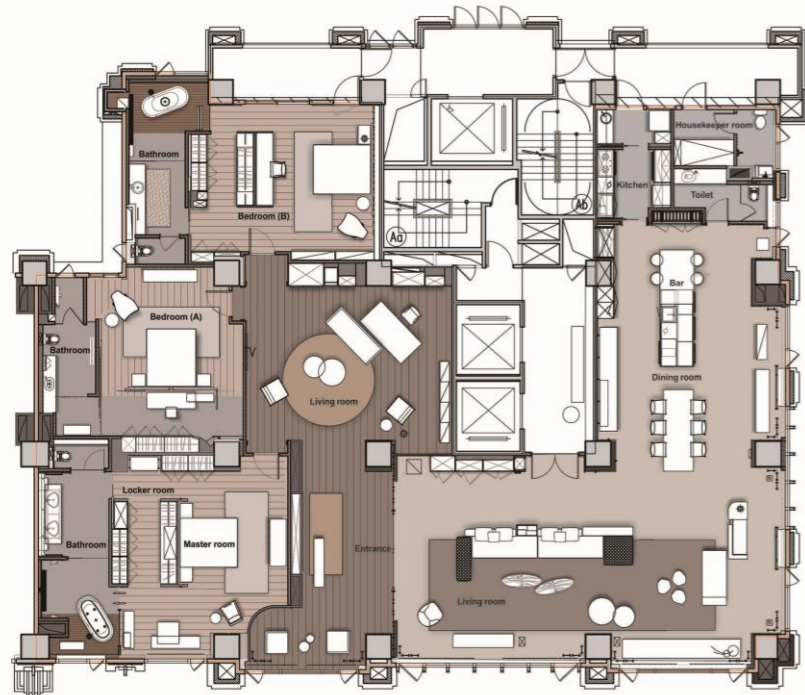
面積：479.95m²
Area：479.95m²

構造種類：鋼筋混凝土
Structure：Reinforced concrete

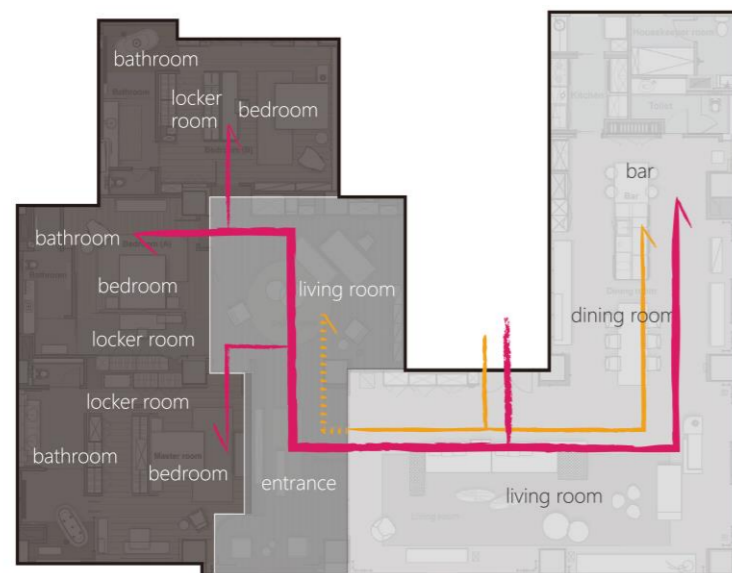
使用建材：鋼刷橡木皮、玻璃、木地板、石材、鋼材
Materials：Woody,Glass,Wooden floor,Marble,Iron

COCY - The cornerstone of the city

DESIGN CONCEPT



PLAN



private space
 conversion space
 public space
 host moving line
 guest moving line

The depth conversion of space

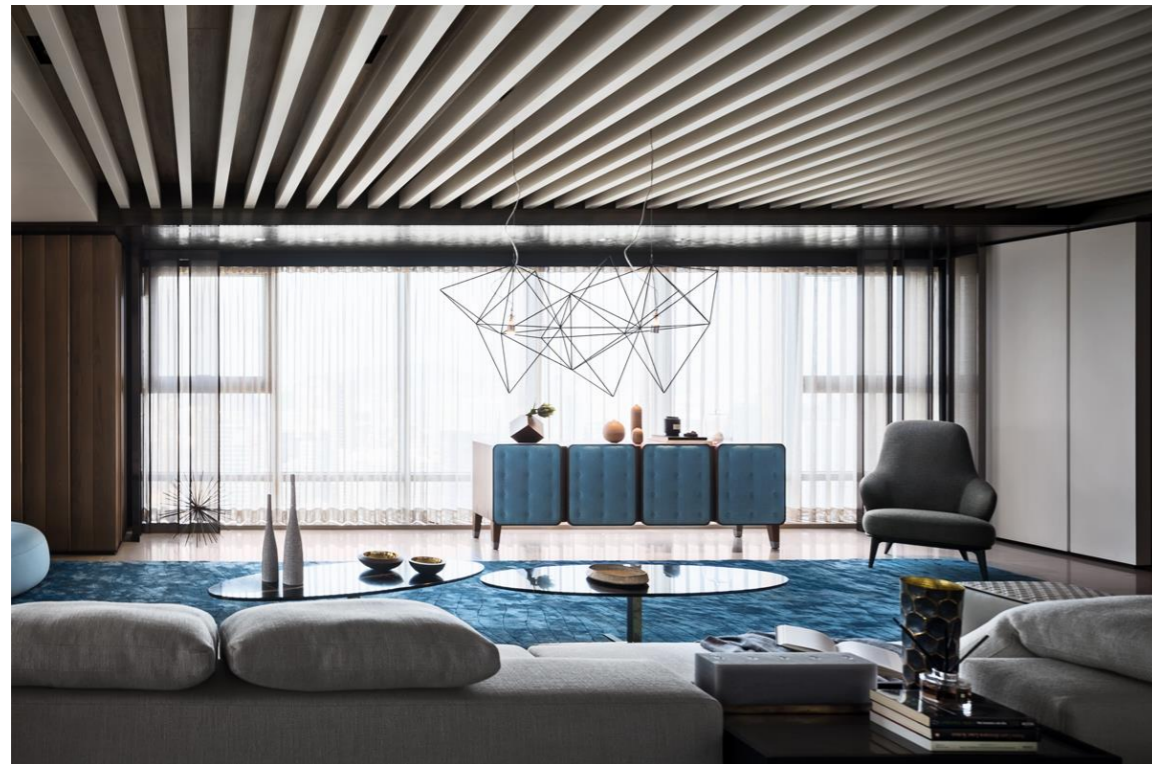
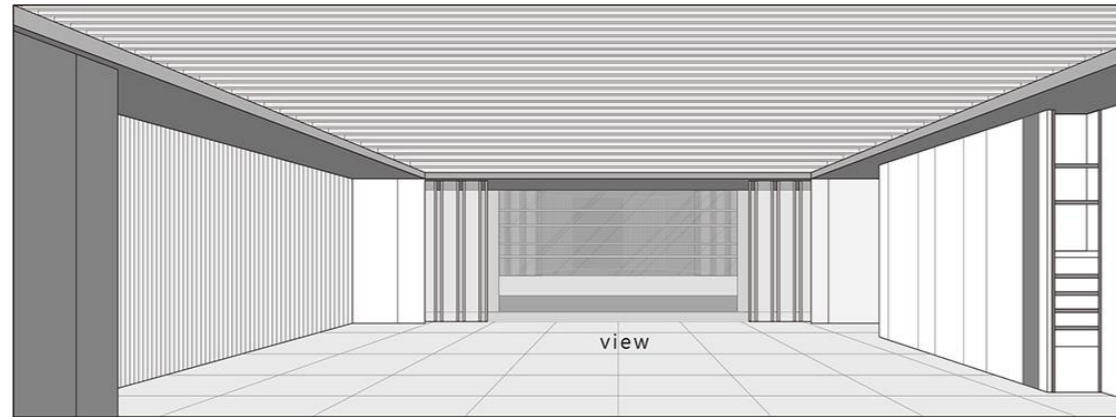


此案坐落於高雄市住宅特區，凌空35層住宅大樓，四周以山海河港為景，因此建築採四周大面積開窗，映入眼前即是無際的城市景緻作為空間延伸，也是此設計中最原始的起點。

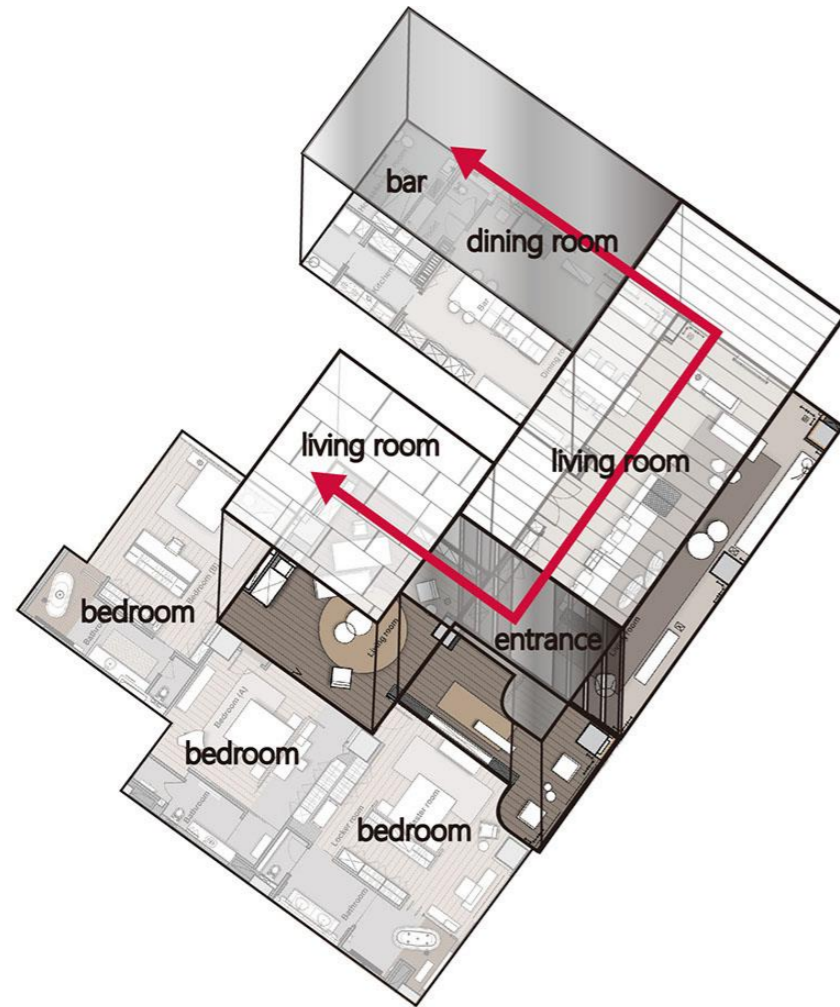
The space is located at the 35th floor of a residential building in the residential area of Kaohsiung City. Because of the surrounded view of mountain and sea, large windows are used to develop the great continuity of spaces. The endless view of the city is the extension of public space, and it is the original idea of the design.

COCY - The cornerstone of the city

DESIGN CONCEPT



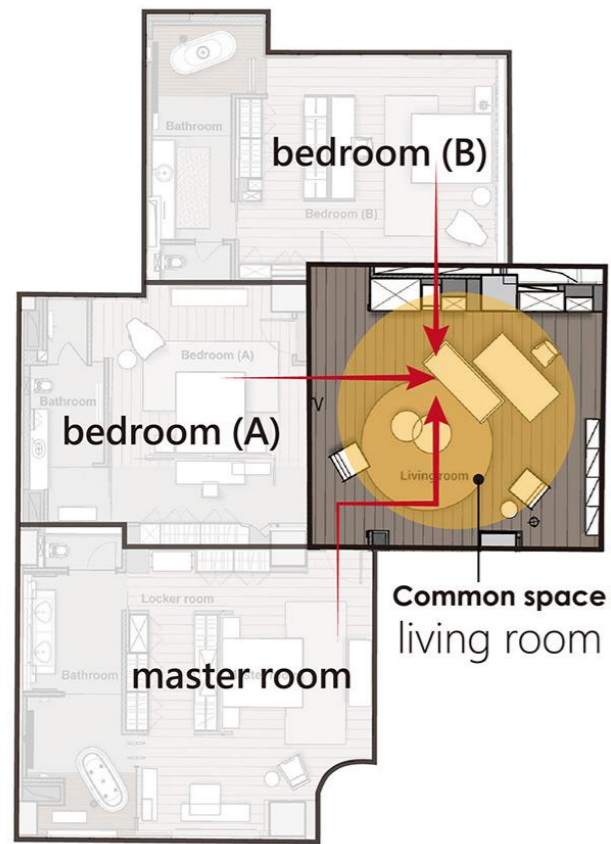
透過天花板連續性的白色框架設計，讓空間在垂直與水平的軸線有著方向性的視覺延伸，也利用不同的家具型態呈現生活在這個區域的使用，意象著每個生活片刻在室內中的生活行為。
Through the continuous white frame design, the vertical and horizontal visual extension in the spaces has been developed. Different types of furniture are applied to demonstrate the usage of the space, and the indoor life behavior is displayed as well.



Define space by conversion of materials

我們企圖將公區的尺度極大化，同時透過顏色管理與材料轉換做為空間的界定，將空間化為近景與遠景的連續。
The scale of the public space is extremely enlarged on purpose, and the management of color and conversion of materials are applied as the division of spaces to make the spaces as the continuity of close view and far view.



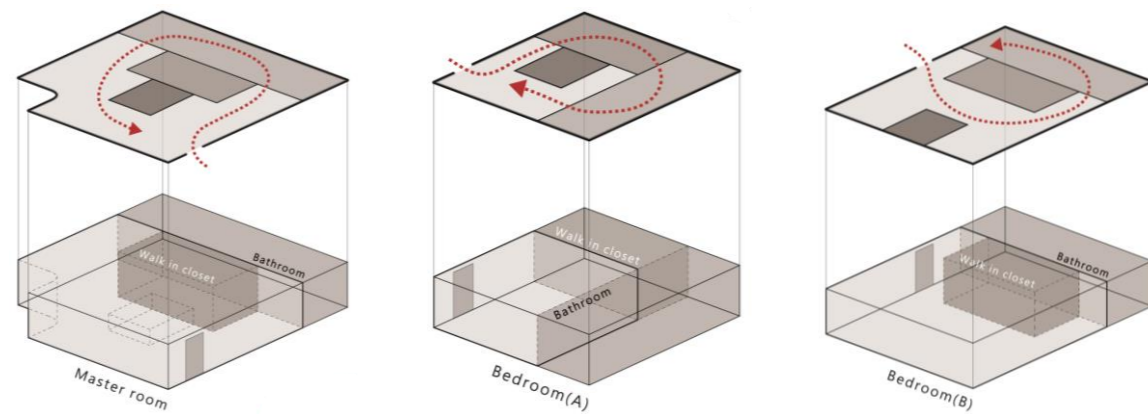


Spatial cohesion of living room



居空間是介於公共與臥室的一個轉換空間，提供了家人有一個較為隱私的交流空間，設計上也延續著公共空間的白色基調去做為延伸，不同的是在這透過了幾何的分割凸顯一種空間凝聚的感覺。

Living room is a conversion space between public space and bed room. It offers a private space for family interaction. The design is extended based on white color design of public space; however, it highlights the spatial cohesion through geometric segmentation.



臥室設計透過回字型的平面規劃，將主要機能都集中在空間中央，使用大量的自然素材，注意材料的反射量，讓自然光灑落在這些垂直牆面時有著素材本身的光影變化，並利用垂直向度的紋路拉伸了空間的延伸感，帶出空間溫潤而沉穩的質感。

The bedroom is designed to make main functions gathered at the center of the space by circular shape of plane planning. A lot of natural materials are used to make natural sunshine shoots on these vertical walls, and every natural material obtains its change of light and shadow. The vertical lines make the extension of space and the space quality of warm and stability.

