



華人生創獎

TAIWAN GOOD DESIGN AWARD

靜木之居

Serene Wooden Habitation

作品資訊

Work information

項目地點：台灣北部

項目類型：住宅公寓類

項目規模：429平方米

空間格局：5房2廳

主要建材：檜木實木、大理石、鐵件、塗裝木皮板、噴漆、超耐磨地板、柚木實木地板、鍍鈦板

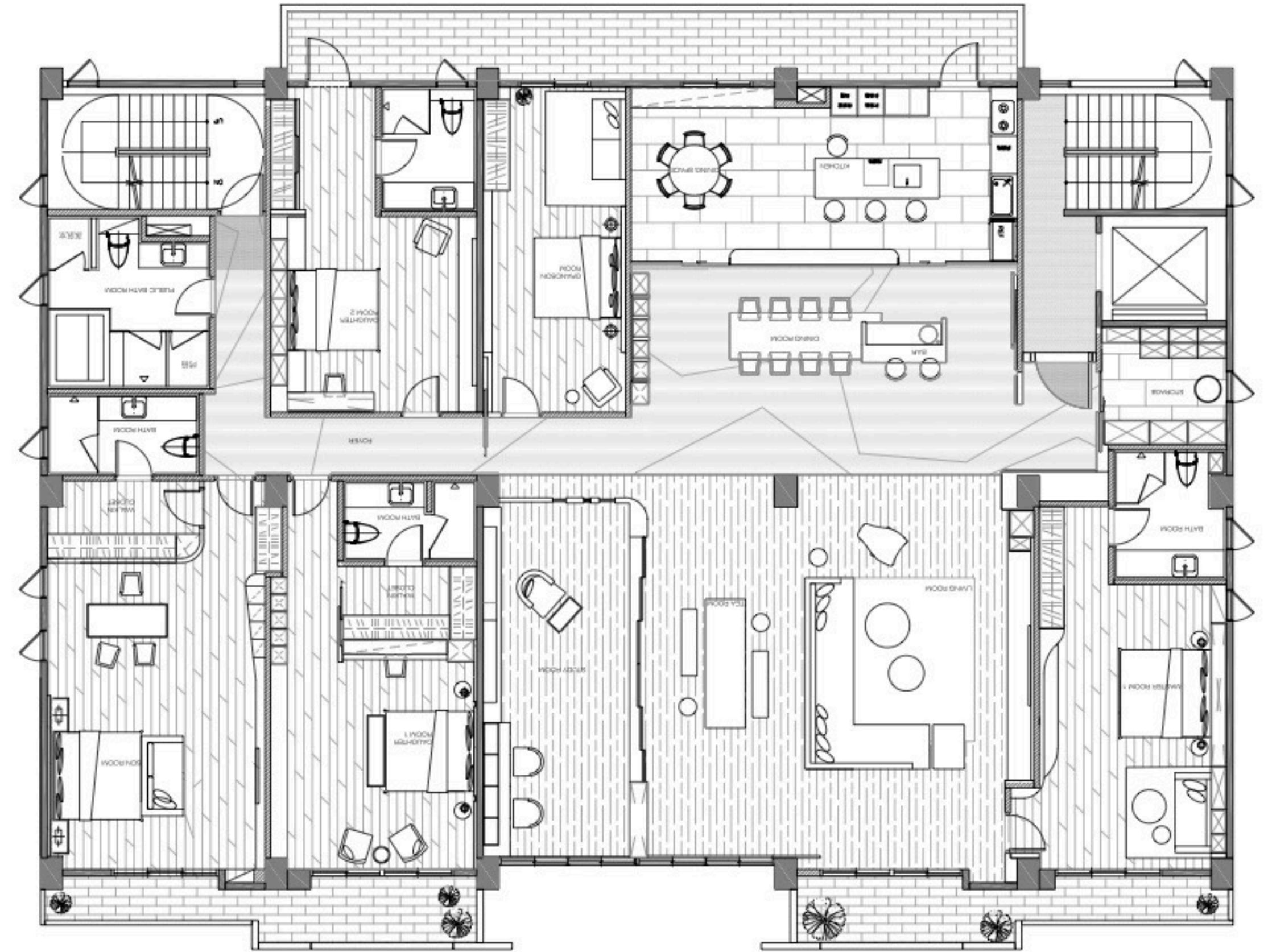
Site location: North Taiwan

Type of construction: Residential apartment

Construction of size: 429 square meters

Spatial pattern: five bedrooms and two living rooms

Main building materials: Elm solid wood, Marble, Iron piece, Painting veneer, Spray paint, Laminate Flooring, Teak solid flooring, Titanium plate





項目定位

Design Proposition

本案為6大2小的住家空間，我們希望透過建築、室內的整合設計，捕捉外界光風動態，銜接內部木石氣韻，將居家內涵及生活需求密綴串聯，讓自然與人文合一的深層禪意透過設計引導，於視覺中釋放出令人耳目一新的感受。適度放大的公領域，通過自然質材選用，結合細膩工法，營造出寬闊而無隔閡的和諧韻致，盡顯主人的大氣與誠摯。

The present case is a residential space of six big rooms and two small rooms. Through the integrated design of architecture and interior, we can capture the external scenery dynamics, connect the internal wood and stone charm, and merge the connotation of home and life demands closely. Let the deep "Zen" meaning be guided by design to release a refreshing feeling in the vision. Moderately enlarged public areas, through the selection of natural materials, combined with exquisite workmanship, create roomy harmony without barriers, to manifest the host's gracious and sincerity.



風格情境

Creativity & Aesthetics

此為三代同堂之家，求取穩重質感之餘，設計師覺察到主人家喜好傳統風尚，亦有求新求變的雅趣；故而將顏色主調定為深色調，增加雅靜感，同時選用大塊自然質材，鋪陳出空間中的禪意。行經之處皆可見圓弧線條作為邊界的轉圓，呼應主人家所喜愛的「圓潤」、「圓滿」意象，更包含著家人圓融相處的期許在內。

This is a joint family of three-generation. Besides pursuing the dignified sense of texture, the designer perceived that the host not only preferences traditional fashion style, but also fond of seeking fresh joys; therefore, the main tune of the color is dark-colored, to heighten the sense of elegance, meanwhile choose immense natural materials, elaborate a meaning of "Zen" in the space. Arc lines can be seen everywhere while turning around, which echoes the image of "fullness" and "perfection" favored by the host, including the expectation of family harmony.



空間配置

Space planning

為串聯起人與人之間的交流與互動，我們將私領域藏於空間兩端，擴大公領域的使用範圍，並集中於住家正中央。仔細剖析場域應有的機能與應用，為其擘出客廳、茶室、和室的漸進規劃，使視聽、沏茶、閱讀等活動由動至靜，做了最合理的安排。另一側則因應來訪客數做了大型餐桌及吧台的配置，為接待機能保留了調整的彈性。

In order to link up the communication and interaction between people, the private areas are hide at both ends of the space; expand the usage of the central public sphere. Ponder the proper function and application of the field, and make the most reasonable arrangement for the living room, tearoom and study. From dynamics to statics, take pleasure in audiovisual, tasting tea and reading activities. On the other side, arranged a large dining table and bar configuration to suit for the visitors, for the reception function to retain the flexibility of adjustment.



選材效用

Materials & Cost
Effectiveness

考量電視主牆重達 3 噸，我們特別加強了建築體的配筋量，使其在承載強度上獲得安全性的保障。空間中利用大量原石、檜木、及柚木，搭建出粗獷的原始生態感；同時在場域轉換的過程中保留相同材質，卻在呈現手法上做了視點的轉換，原先在客廳地面的木地板，到了餐廳卻成了天花板的質材，使得同一質材能展現出它各式各樣的豐富表情。

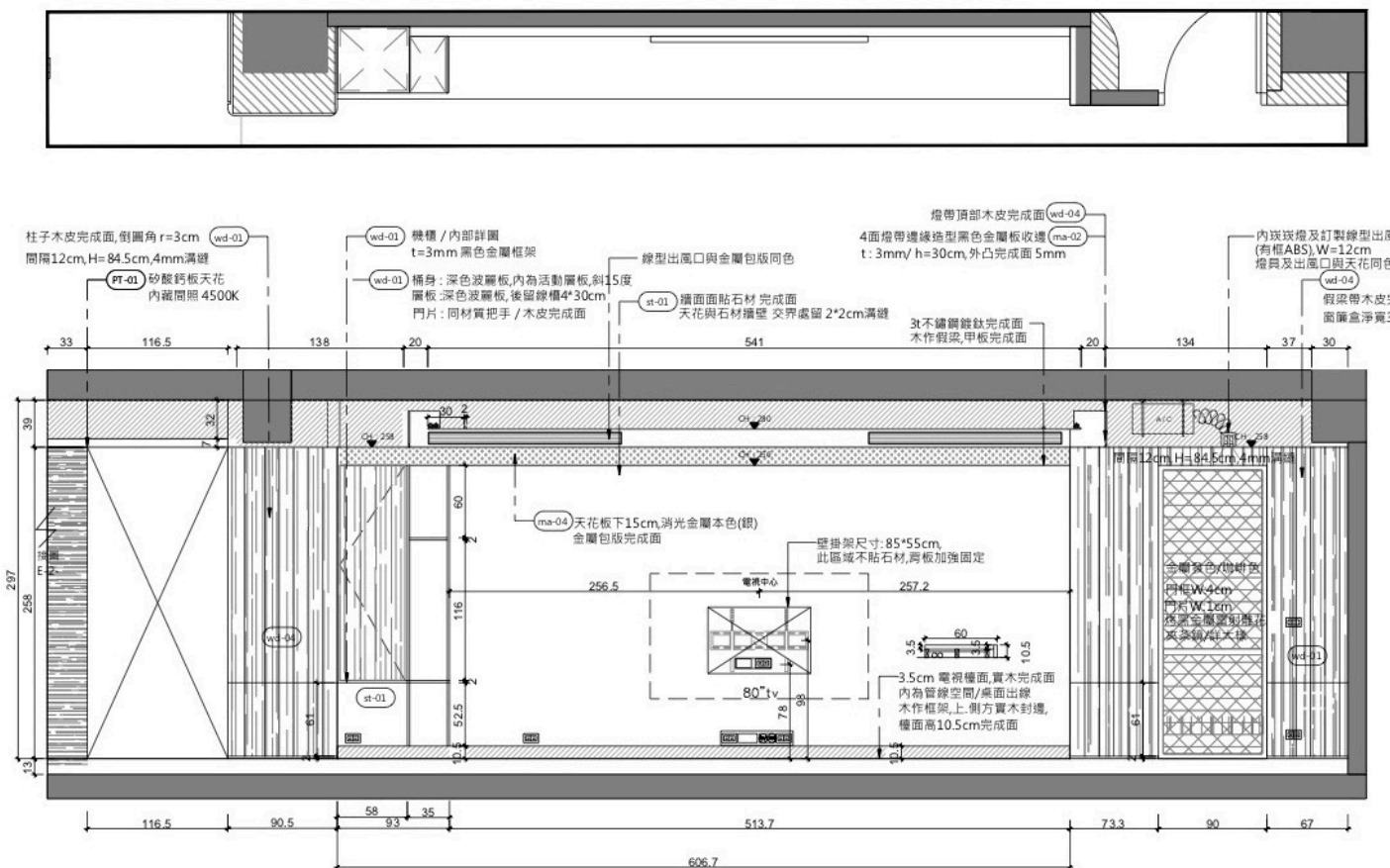
Considering that the TV main wall weighs up to 3 tons, we have especially strengthened the reinforcement of the building to ensure its safety in bearing strength. In the space, a large number of stone, Taiwan red cypress, and Teak are used to build a natural ecological scene. Even if the same material is retained in the process of field conversion, but in the presentation technique is changed. The wooden floor in the living room has become the ceiling material in the dining room, so that the same material can show its various rich expressions.

客廳 Living Room



為強調天然、沉穩印象，我們從國外進口原始石材，同時保留火藥開鑿過程中留下的痕跡，拼建出長達5米的岩層外型電視牆，希望藉由凹凸表面的粗獷氣息，打造原始生活肌理。由於電視牆重達3噸，我們特別於房屋結構上添足配筋量，以確保整棟建築的耐重及安全性。由於石材為深黑色，因此我們在兩側嵌以深木色板材延續其深濃色調，並讓質材由石塊轉為木質，降低視覺上的沉重感。

In order to emphasize the nature and stable impression, import the original stone from abroad, while retaining the traces left in the process of gunpowder excavation, and construct a 5-meter-long rock outward-shaped TV wall, hoping via the unconstrained concave and convex surface to initiate a vigorous primitive texture of life. As the TV wall weighs 3 tons, especially strengthened the reinforcement of the building to ensure its safety in bearing strength of the whole building. Because of the dark black stone, veneered deep wood-colored boards on both sides to maintain the tone, and change the material from stone to wood, reducing the visual sense of heavy.

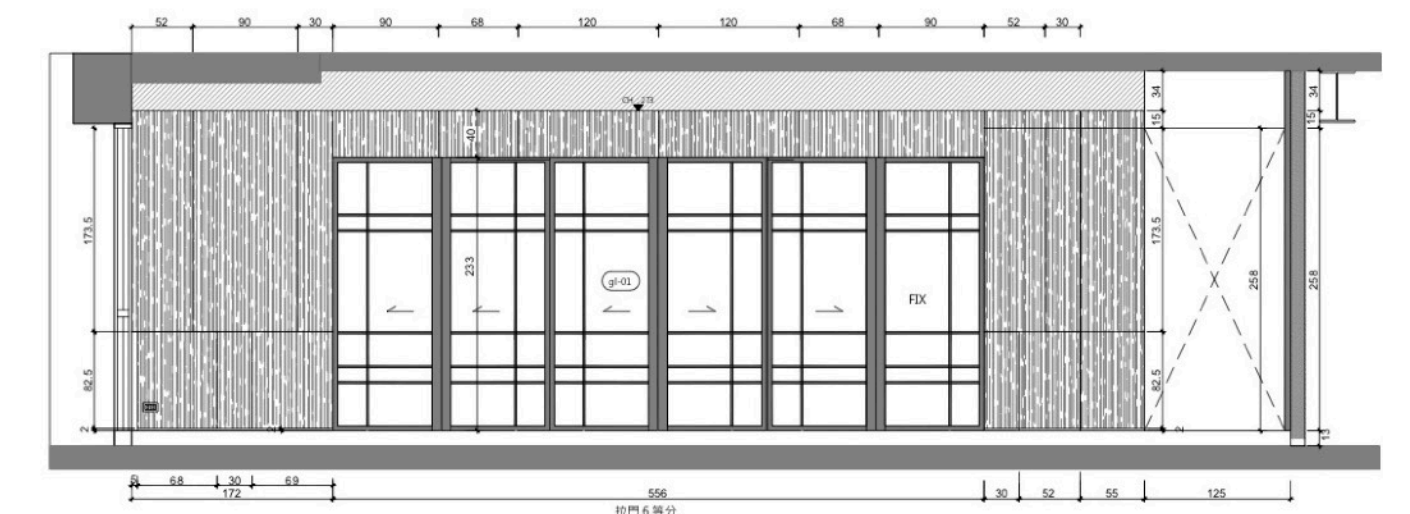
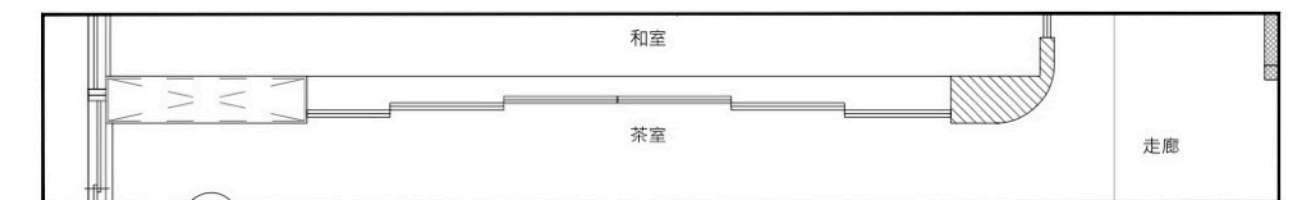


茶室 Tea Room



考量屋主品茗的嗜好，我們在銜接客廳與書房的中央地帶，設置了一組沏茶用桌椅，希望藉由紋理較豐富的胡桃木增添視覺豐富性，並於予人溫潤感受的柚木地面上，建立深淺有序的層次畫面。

Considering the house owner's hobby fit a set of table and chairs for making tea in the central area connecting the living room and the study. Hoped that the rich walnut texture can add visual richness and by the warm Teak floor framed a layered orderly visual image.

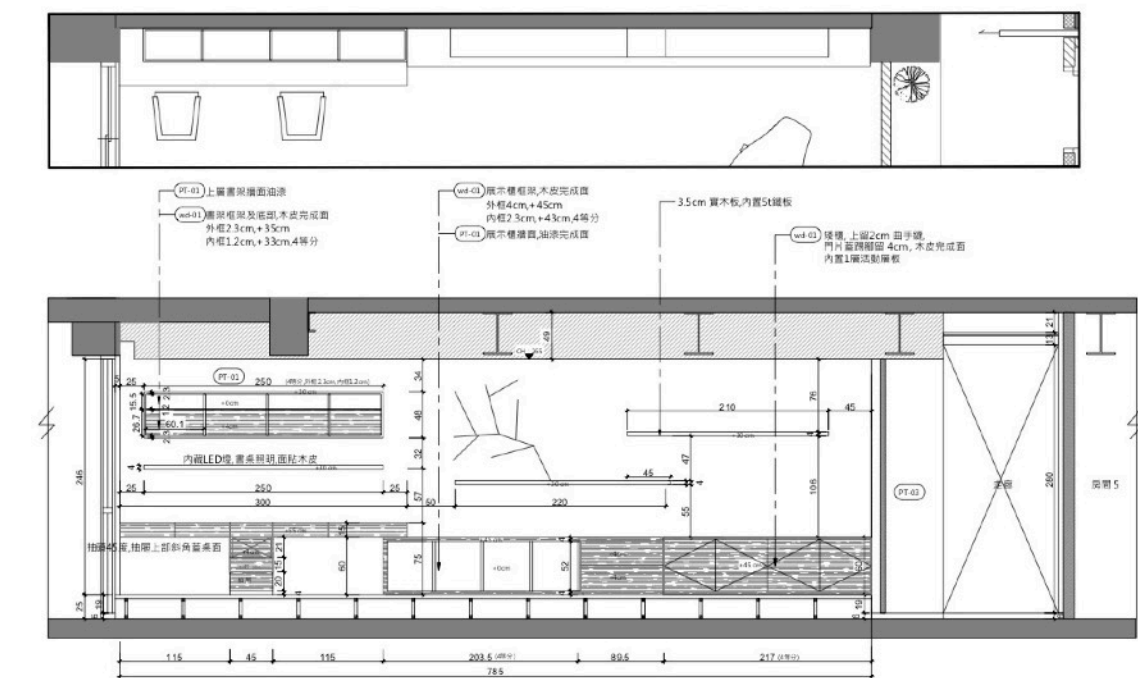


和室 Tea Ceremony room



對開拉門嵌以清透玻璃，在保有空間主體性之際，光線亦可貫穿於室，創造窗明几淨的質樸感受。此區維持穩重色調，吊櫃、矮櫃及書桌皆貼深色木皮，奠定內部調性。另以厚4公分的台灣檜木釘於牆面，希望木材在作為置物架的同時，亦能成為一方優美端景，為沉靜的和室注入一點輕盈語彙。

The bisect sliding door is embedded with clear glass, while maintaining the space independency; light can also penetrate the room, creating a guileless, bright and spotlessly clean feeling. This area preserves the staid tone, the hanging cabinet, low cabinet and desk all veneered with dark wood rind to settle the internal tonality. In addition, nailed the 4 cm thick Taiwan Elm on the metope to be used as a shelf as well as an elegant scene. Insert a vivid intimation into the peaceful room.



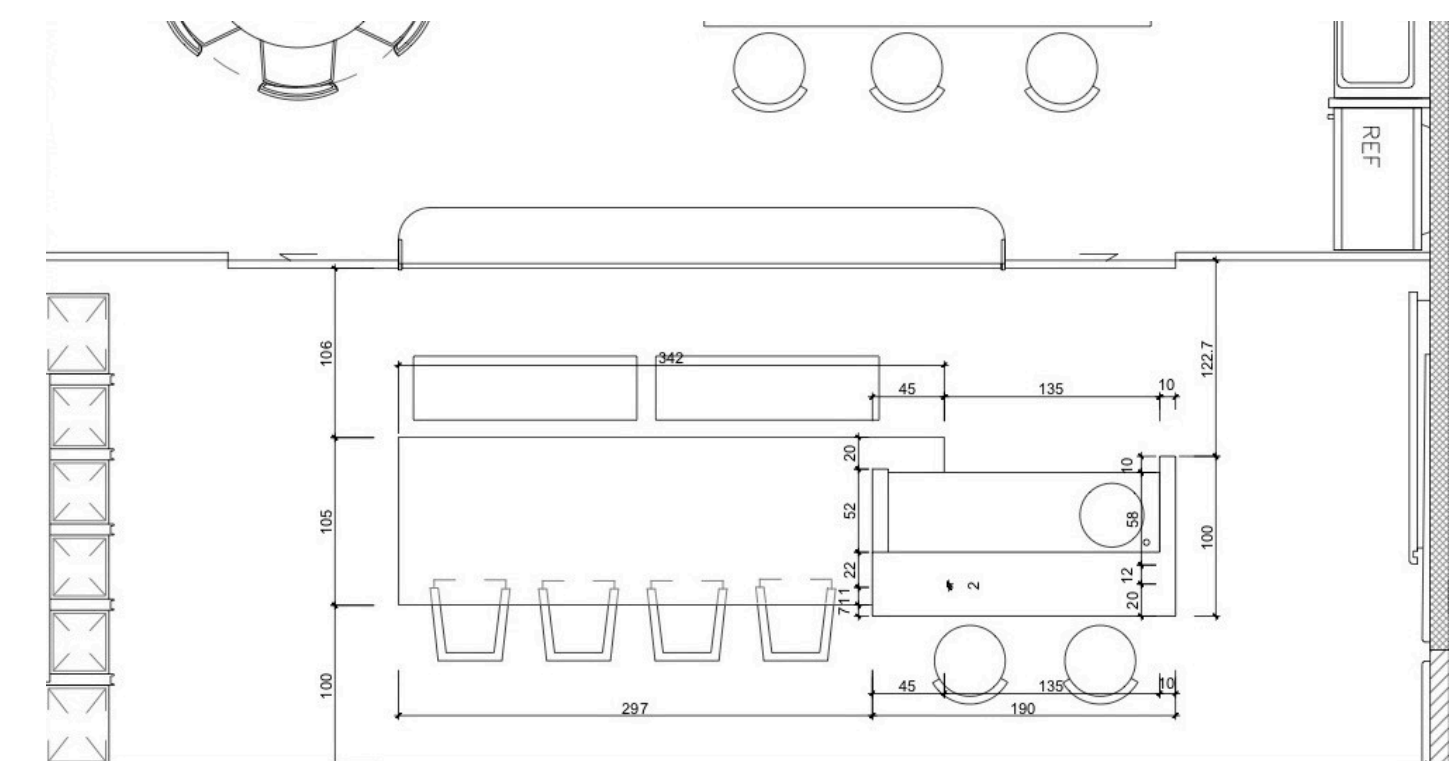
以屋主興趣為構想，讓品茗成為空間的中介，串聯起客廳及書房的開放性，書房的拉門造型牆面，關閉時為開放區域的端景，打開可再度延伸視覺的焦點於禪意造型牆上，一層一層的視覺效果，依空間使用而變換。

餐區 Dining area



客餐廳以廊道天花寬窄有距的線條拉出分野，並以倒轉手法讓金絲柚木天花板、石材牆面在視覺中擁有位移變化，展示質材的變化性與美感同時，亦能良好地維持空間中的一貫語彙。檜木餐桌部分嵌入大理石面吧台，暗示東方文化中包容的美德；枝椏燈具與長型吊燈並懸，使簡單空間中的古典、時尚氛圍能夠輕易跳接轉換，達到「質」與「氣」的完美聚合。

The living room and dining area is separated with the varying width lines of the corridor ceiling. By way of reversed technique to make the gold silk teak ceiling and stonewall generated a vision displacement. Not merely illustrated the variability and aesthetics of materials, but also maintain the spatial consistency well. The birch dining table is partly embedded in the marble bar counter, intimated the inclusive virtue of the Oriental culture; The twig lights and long chandeliers are hanging side by side. That enables the classical and fashionable atmosphere easily transformed in the space, to achieve the perfect convergence of "quality" and "temperament".







華人金創獎

TAIWAN GOOD DESIGN AWARD

Thank You