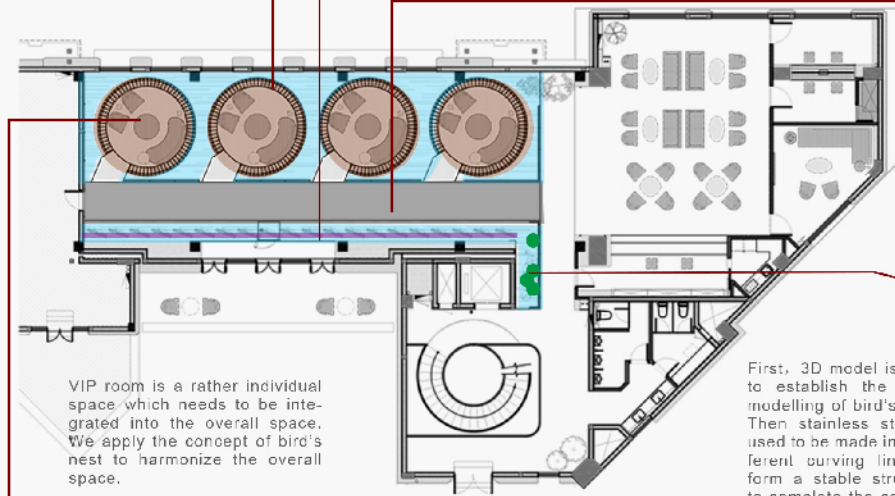




BIRDS NEST

BIRDS NEST

CONCEPT

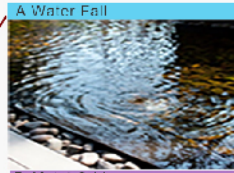
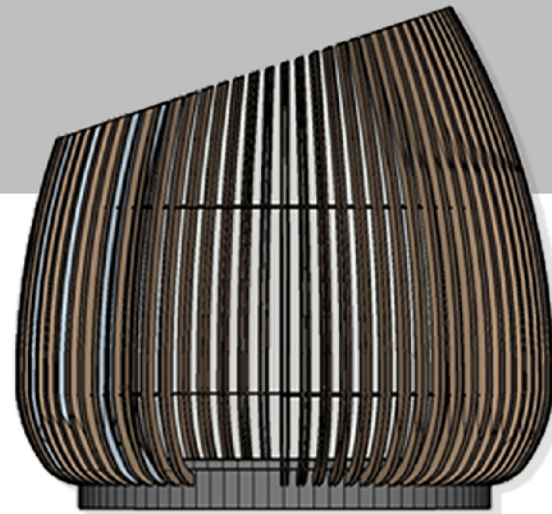
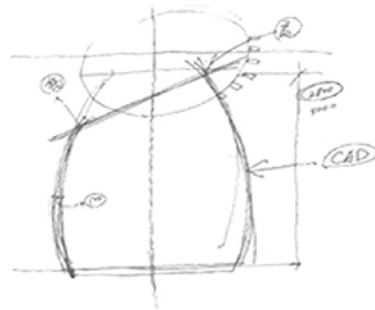


VIP room is a rather individual space which needs to be integrated into the overall space. We apply the concept of bird's nest to harmonize the overall space.

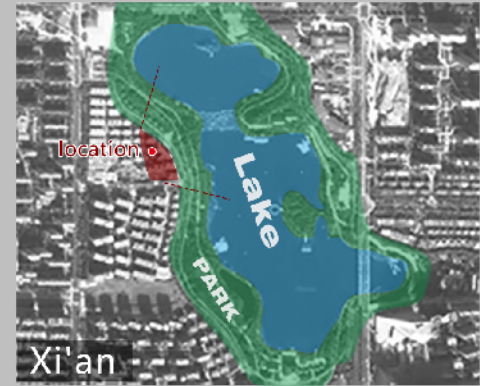
First, 3D model is used to establish the basic modelling of bird's nest. Then stainless steel is used to be made into different curving lines to form a stable structure to complete the concept



BIRD'S NEST



LOCATION



The project is close to Qujiang Park in Xi'an. In addition to the rebuilding of many historical sites, restore the green woods and clean water. Based on the geographical characteristics, implant the concept of oriental garden into the design. Apply with natural landscape elements like bridge, flowing water, lotus, plum tree, bird's nest on the tree, etc. form interior landscape to present respect and inheritance for natural landscape.



Based on the geographical characteristics of the project, we apply design elements of exterior oriental garden into the interior space. With application of elements like bridge, flowing water, lotus, plum tree and bird's nest on the tree, we form interior landscape to present our respect and inheritance for natural landscape.











Based on the geographical characteristics of the project, we apply design elements of exterior oriental garden into the interior space. With application of elements like bridge, flowing water, lotus, plum tree and bird's nest on the tree, we form interior landscape to present our respect and inheritance for natural landscape.











