



華人之創獎

TAIWAN GOOD DESIGN AWARD

光影的盒子

Flashing Castle

作品資訊

Work information

項目地點：台灣北部

項目類型：臨時空間類

項目規模：66平方米

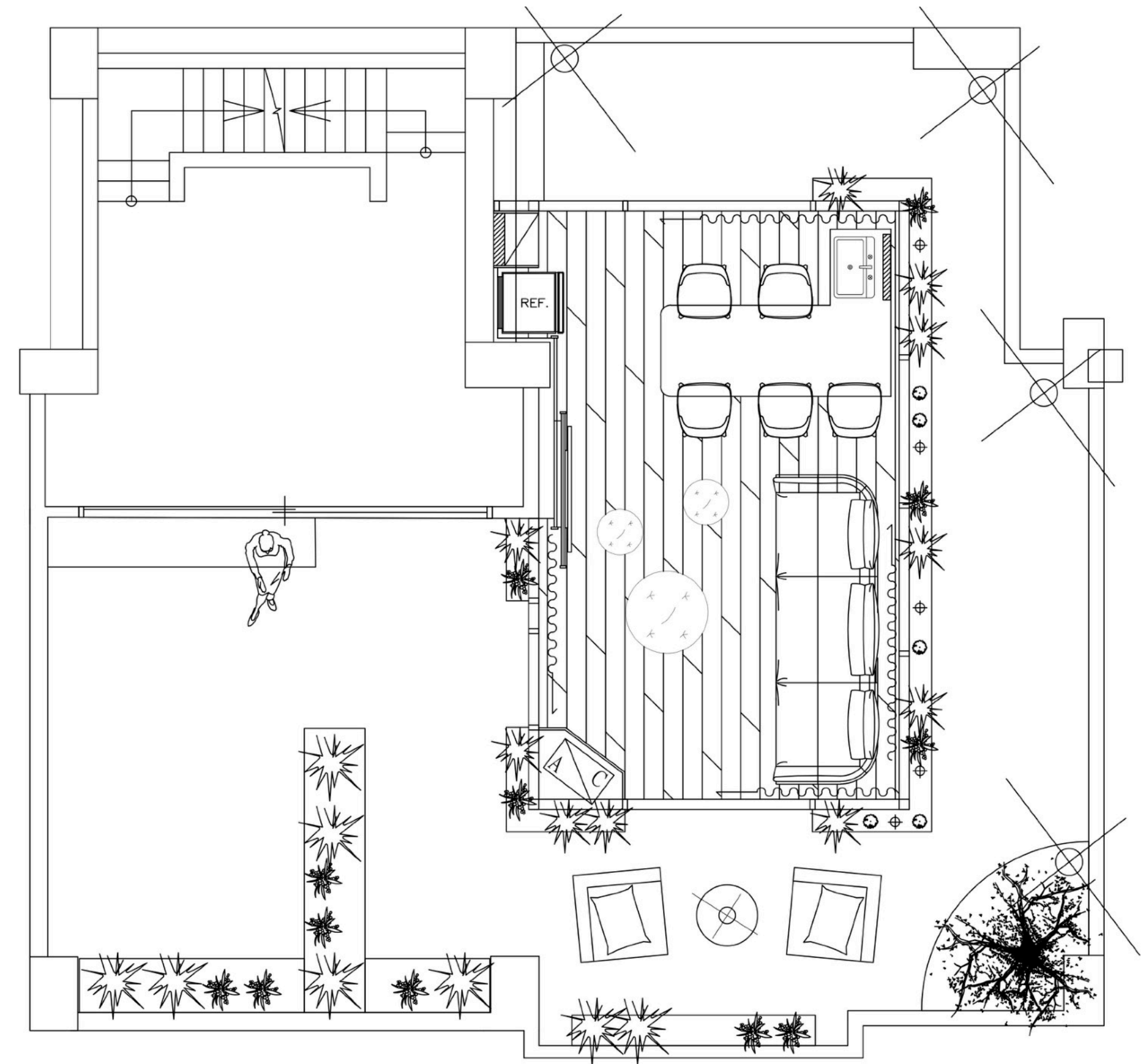
主要建材：鋼構、玻璃、石材、金屬、繃布、園藝

Site location: north Taiwan

Type of construction: Temporary space

Construction of size: 66 square meters

Main building materials: Steel structure, glass,
Stone, metal, headboard cover, horticulture





項目定位

Design Proposition



本案座落於住宅頂層的寬闊露台，周圍環繞著熱鬧的都市街景與蔚藍天空，因而成為得天獨厚的賞景位置。「開闊視野」與「彈性化機能」為我們的首要考量，在丈量土地總面積後，決定保留多數區域作為戶外空間；並以「玻璃盒子」的概念發想，運用清玻璃為主要面材搭建量體，搭配四周圍繞的植栽造景，進而融合室內與戶外兩種生活場景，使風光充盈在日常的各個角落。

This spacious terrace is situated on the top floor of the building, surrounded with boisterous urban street scenery and azure skyline, thus has the advantaged location to admire the scenery. Therefore, "spacious vision" and "flexible function" have become our top priorities. After measuring the gross floor area, we decided to leave a sizable range for the outdoor space. Based on the concept of "glass box", so make use of clear frit as the major constructing material. Collocate with plantings around to make the natural scenery just as the best design element. Further integrate the indoor and outdoor two kinds of life scenes to make the wonderful sights fulfill every corner.



風格情境

Creativity & Aesthetics



為回應業主在此招待賓客的需求，團隊屏除制式封閉的建造形式，結合景觀酒吧及度假小屋的概念，採用玻璃面材將戶外風光收攬入室，使賓主在小酌談天時，能環擁360度的日夜景致。另外，在量體內部則以鐵件、實木及石材為主要構件，利用金屬的冷調性質中和木石材在視覺上的熱度，讓溫暖中帶有一絲清涼觸感，更共塑出高雅而悠閒的酒吧氛圍。

Due to the proprietor is aspire to make use of the space to entertain their guests, therefore the design team do away with the blocked construction modus, yet with the concept of combining the scenic bar and holiday cottage, to adopt glass fabrics let the master and their guests can enjoy 360 degrees of surrounding sceneries while chatting with each other during the feast party. In addition, the interior is mainly composed of iron, solid wood and stones. The innate cold-conditioning character of metal neutralizes the visual sultriness of wood and stones, so as to feel the cool sense, as well as to initiate a more elegant and leisurely bar ambience.



空間配置

Space planning



由於量體空間有限，要同時容納聚會與餐飲需求，並展現開闊視感；因此我們整併起居與用餐區域，不再設置輕隔間或變換地坪材質，而是讓視線保持開放一致，搭配四周立面與天花板的電動窗簾，當窗簾開啟時更消融了「內」與「外」的視覺界線，同時達到絕佳的隔熱效果。

Owing to the limited space, but have to take into account the demands of gathering and feast, moreover to hold out the breadth of vision; therefore the living room and dining area are consolidated without compartments to keep the capacious and consistent sight. Furthermore along with the electric curtain opened, the visual boundary of "inside" and "outside" faded away, while reaching up to the excellent heat insulation effect.



選材效用

Materials & Cost
Effectiveness



量體外觀採用鋼構基底搭載清玻璃面材，傾斜設計的天頂形成引雨水滑落的斜面，搭配加高支撐的戶外地基自然疏導水流，使屋舍不僅安全無虞同時免去淤積之擾。因應小屋採用深色金屬構件，故周圍環境以視感輕盈的白色作為主調，圍牆使用漆白文化石，花圃牆則選用同色烤漆的不銹鋼材質，統一色度同時避免日曬雨淋造成鏽蝕的疑慮。而量體內部則使用黑白灰為基底，配合鍍鈦鐵件、原色實木及天然石材，營造高貴氣派的感受。

The outward appearance of the building mass is based on steel and equipped with tempered clear glass, the inclined roof is designed for rainwater diversion, and the elevated outdoor ground naturally drained the water flow, so that the house is not only safe but also free from the annoyance of siltation. On account of constructing with dark metal components, thence mainly adopt lightness white as the base tone for surrounding environment. The enclosing wall decorated with white cultural stone, and the flowerbed wall with the same color of painted stainless steel. To unitize the tinge also avoid the doubts of rust caused by sunshine and rain. The inner part uses black, white and grey as the base tone, with titanium-plated iron, solid wood and natural stone to create a noble and generous imposing.



起居空間

Parlor Space



當日照過盛，全數採電動設計的窗簾，則便於使用者隨天氣變化調整開闔程度；此外，窗簾盒更作為室內燈帶的設置迴路，形成間接照明灑落柔和光線，使溫馨氣氛益加濃郁。起居室的另一主要元素則是鍍鈦金屬，使用於燈飾、長桌邊緣與茶几台面等，與鋼筋骨架質地相應，其冷調質感點綴並調和木質地坪、樑架的柔軟印象，統合起居與用餐區塊的整體美感。

Once the sunshine is too strong, the electric curtains can adjust the opening extent according to the temperature alter. In addition, the curtain box is used for setting circuit of the interior lamp belt to form indirect illumination and the soft light initiate the rich heartwarming atmosphere. Another main element of the parlor is titanium-plated metal, which used for lamps, long table edges and the mesa of tea table. The icy tone of steel texture embellished the soft impression of wooden floor and beams, and integrated the overall aesthetic spectacular of the parlor space and dining area.



電視牆及冷氣設計

TV wall and air conditioning Design



以翡翠綠石與白色繃布錯落裝設的雙層電視牆，翻轉大眾印象中翡翠綠石材的古板老氣，下層電視牆的半圓形起伏線條，由一旁的灰紋蛇行簾接續延展為三側立面，形成疏密排列與色彩對比鮮明的布質對話，此外也兼具遮擋艷陽的功效，將美感與機能完美融合。

角落的零星地帶轉而成為直立式冷氣的存放空間，由於電器高達一米九，因此我們決定採用百葉門將之收納並有利於散熱，但考量門片高度不足以完全遮擋，因此我們援引窗外綠意，於上方加裝含有植栽的玻璃櫃體，形成散發自然質氣的討喜端景。

The double layer TV wall with jadeite green stone and white fabric is set up separately that overturned the public impression of old-fashioned style of Emerald. The semi-circular undulating lines at the bottom of the TV wall are extended from the side grey grommet pleat into three facades, formed a spacing arrangement and distinct color contrast. Moreover, also have the function of sun shading.

The sporadic space in the corner is used to place the vertical air-conditioner. Since it is up to 1.9 meters, we decided to stash it behind the louvered door, which also has the advantage of heat dissipation. However the height of the door cannot completely covered the sight, therefore, lodged a glass cabinet with flora on the top to give off natural and pleasant end scenery.



用餐區域

Catering area



餐飲區的客製化長桌與懸空式流理台一體成型，我們將管線藏於流理臺支柱內，顧及機能之餘，也避免為了收納外露管線而加裝櫃體，所導致的厚重感；至於長桌則以石材作為主體，檯面邊緣利用鍍鈦圓角表現，桌腳亦包覆同色金屬，除了呼應電視牆與茶几外，更為聚餐時分增添高貴質感。

Customized long table and suspended countertop in the catering area are integrally formed. In order to stow the exposed pipelines thus hide them in the pillars of the countertop to avoid the sense of heaviness caused by adding cabinets. The long table is build of stone and the mesa edges are titanium-plated, the legs of the table are clad with the same color metal. In addition to echoing the TV wall and tea table, but also enhance the noble quality while gathering for meals.



露天看台

Alfresco Terrace



推開起居區鄰側的落地窗，來到散發度假氣息的露天看台，熱情洋溢的植栽散發自然氛圍，進一步引導使用者游走於內外兩種情境。而戶外加高設計の木棧區，讓人即便在雨後外出也不需擔心地面積水，能夠放心踏足每個角落。為對應量體色彩，戶外採用純白色系鋪展敘事——乳白文化石拼貼的女兒牆、不鏽鋼烤漆的花圃牆，以及兼具排熱及穿透感的沖孔板等，讓色彩主題兼及每一項設計，成為烘托量體及風景的最佳襯底。

Opened the French window of the parlor, step into the terrace, which distribute the scent of vacation, and the ebullient plantings spread out the natural atmosphere. The outdoor heightened wooden trestle area, even after the rain, there's no need to worry about ground ponding, can rest assured to step on every corner. In order to correspond to the building mass tone, the exterior adopt pure white series - the milky white culture stone collaged the parapet, stainless steel painted flowerbed wall, and the white punching plates with both heat elimination and penetrate sense. Let the color theme related to each design, and turned into the best foil of the building and the landscape.



華人生創獎
TAIWAN GOOD DESIGN AWARD

Thank You