



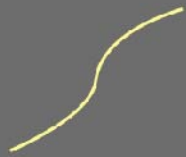
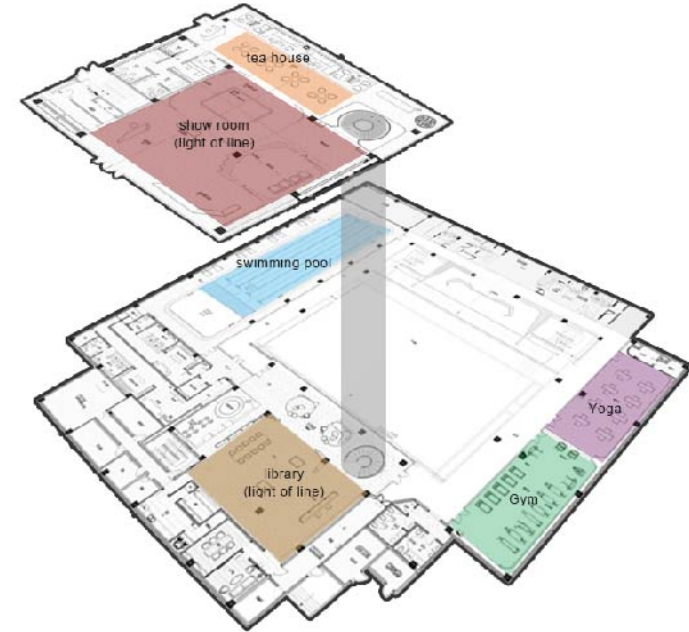
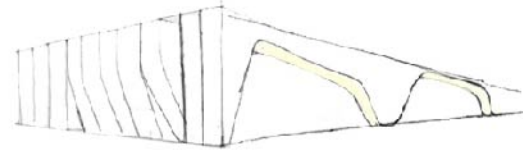
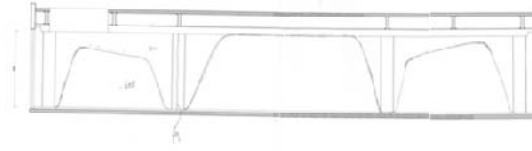
TREASURED MANSION
CLUB HOUSE

TREASURED MANSION CLUB HOUSE

LIGHT OF LINE CONCEPT



Design try to design a flexible space with lines of light. First, curving light lines are formed, then combines these lines into a luminous elevation. Put the ceiling and wall together to form a complete space of light. We use 3D modelling to research on the size, dimension and height of light lines as well as ergonomics. Economical materials like lamp film and LED light are used in design of the space to create a unique space with flow lines.



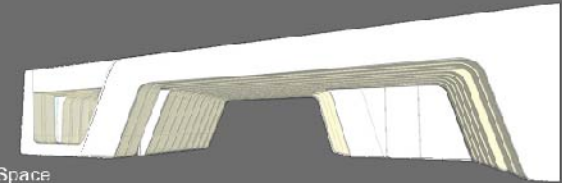
Light of line



Surface



Combination



Space



Build an imaginary "future life hall" to carry the project display and sales reception functions. "Hidden" and "hidden" are mainly used in the planning and design.





This design project is a clubhouse, the ground floor has the function of the clubhouse, such as swimming pool, fitness, tea house and other grey space corridor surrounded by a sunken courtyard space.



Application method:

In the design process, the fluid space is used to create the whole project, and the whole space is presented by combining the light part with the fluid line. Use the material such as the pull that pervious to light and smallpox, pass a few lines to collect form a face, from top face part and the part of metope, build the feeling of fluctuation of on any account and wave, form a delicate and complete space finally.









Interior space:

This interior space USES streamline lines to run through the project. The light part is combined with the flow line to present the whole space, and the luminous ceiling on the top is also reflected on the building's facade, forming a visual focus.







