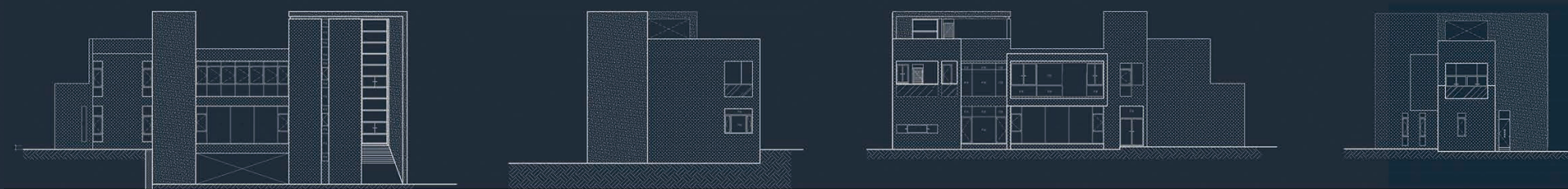


家
House Vision
的想像





空間主軸在於整合建築及室內設計，裝飾本身並非重點，而是建築形式所連動影響的室內外空間，才是大家共同在乎的。

我們與業主都希望建築本身是輕盈卻又具有份量的，這種矛盾是因應鄉村的民情及城市的美學的綜合體，亦順應台灣南部大雨及炎熱的氣候要件。

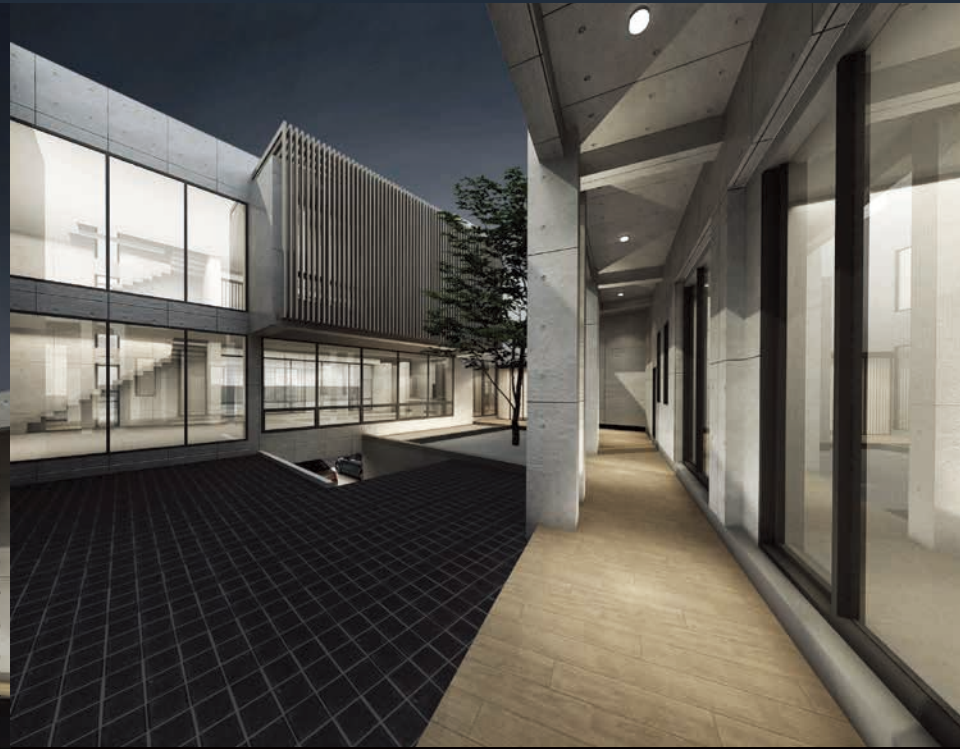
House Vision

家的想像

The central axis of space lies in the integration of architecture and interior design. The decoration itself is not the focus, but the indoor and outdoor area affected by the architectural form is what everyone cares about.

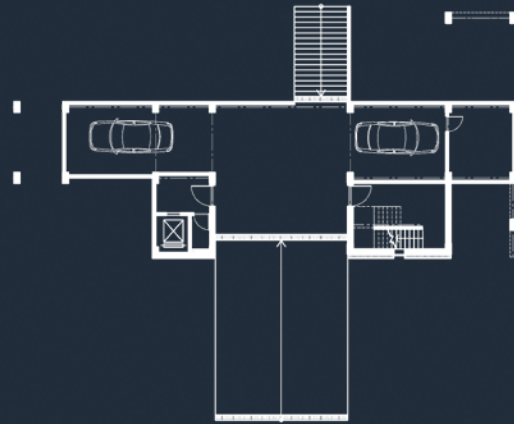
Both owners and our hope that the building is light and weighty, and the contradiction is in response to the rural community and the aesthetics of the city. It also conforms to the heavy rains and hot climate elements in southern Taiwan.



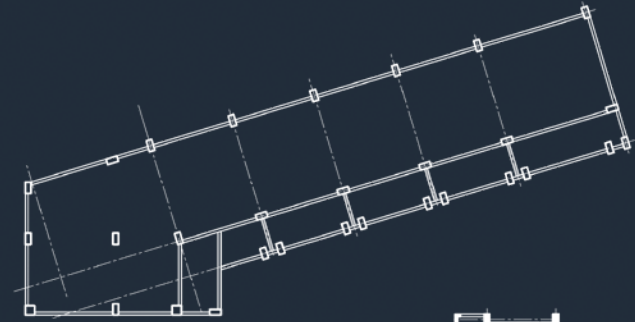


「 首先下挖了半個地下室深度，並利用基礎的空間作出了雨水箱涵，一樓因此抬高了半層樓，這類似南島民居的建築形式（高腳屋）可增加通風及抗潮的功能。」

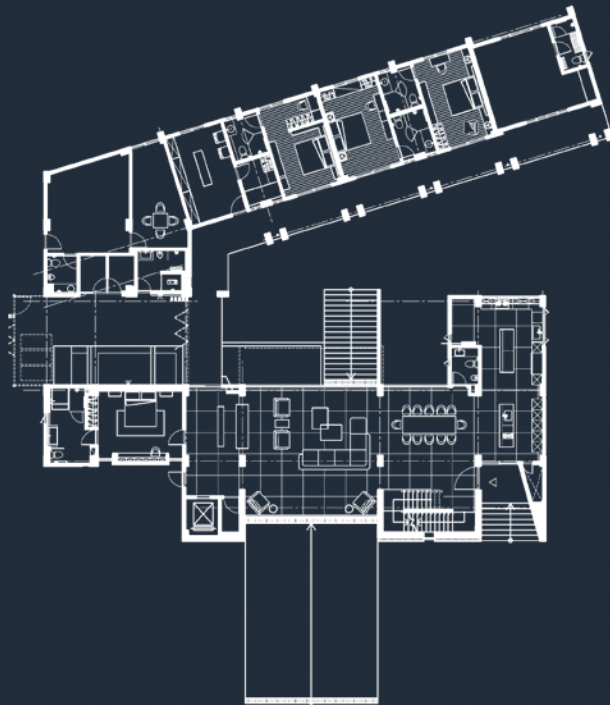
floor plan



B1F



2F



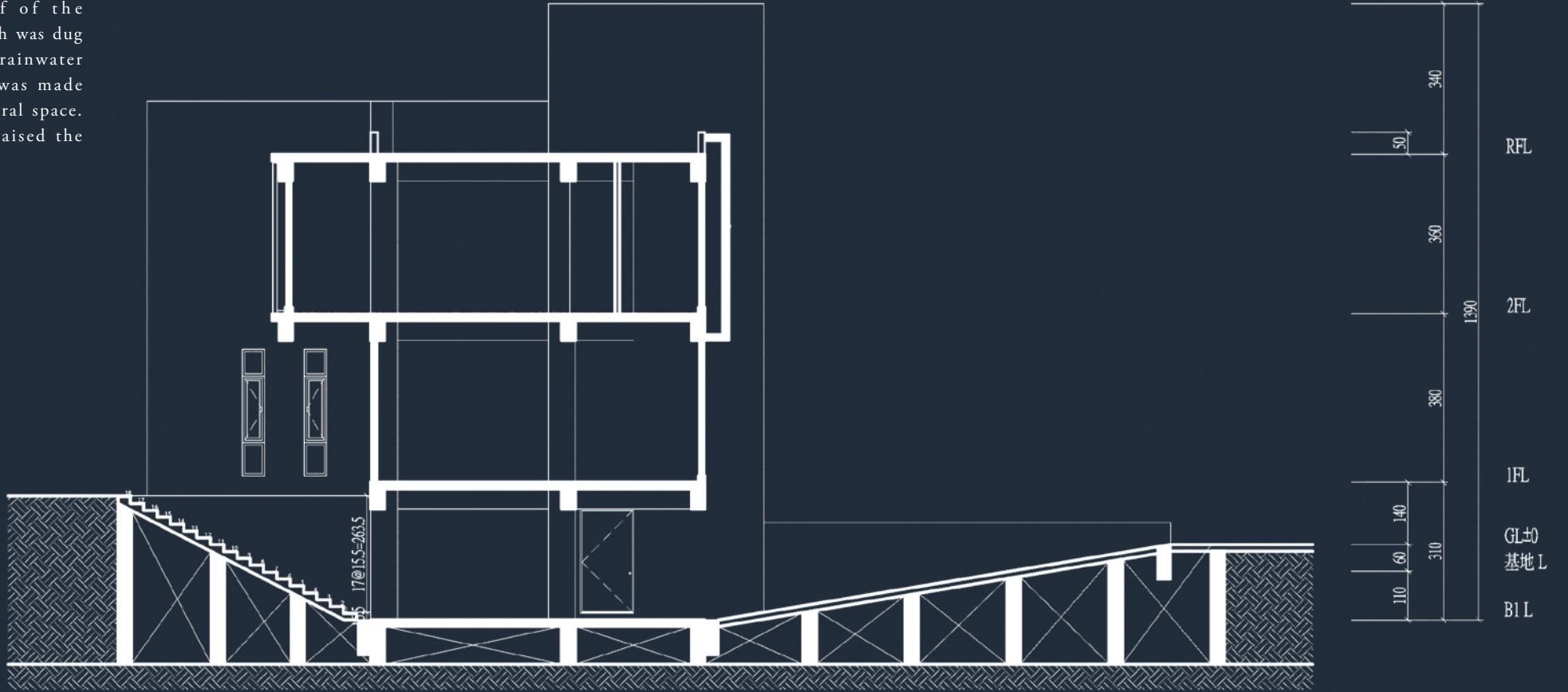
1F



RF

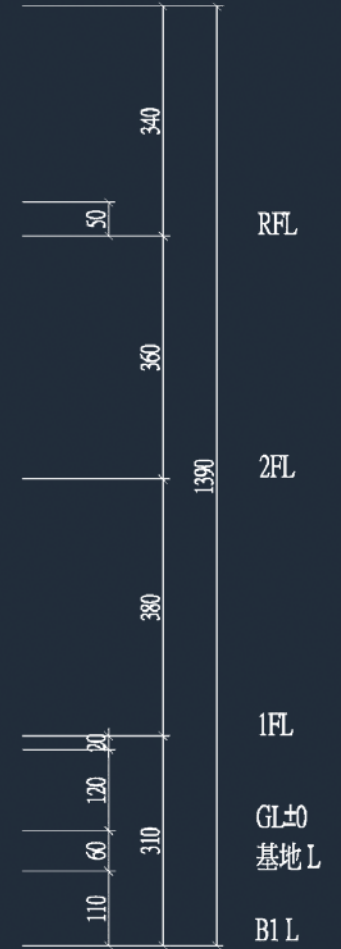
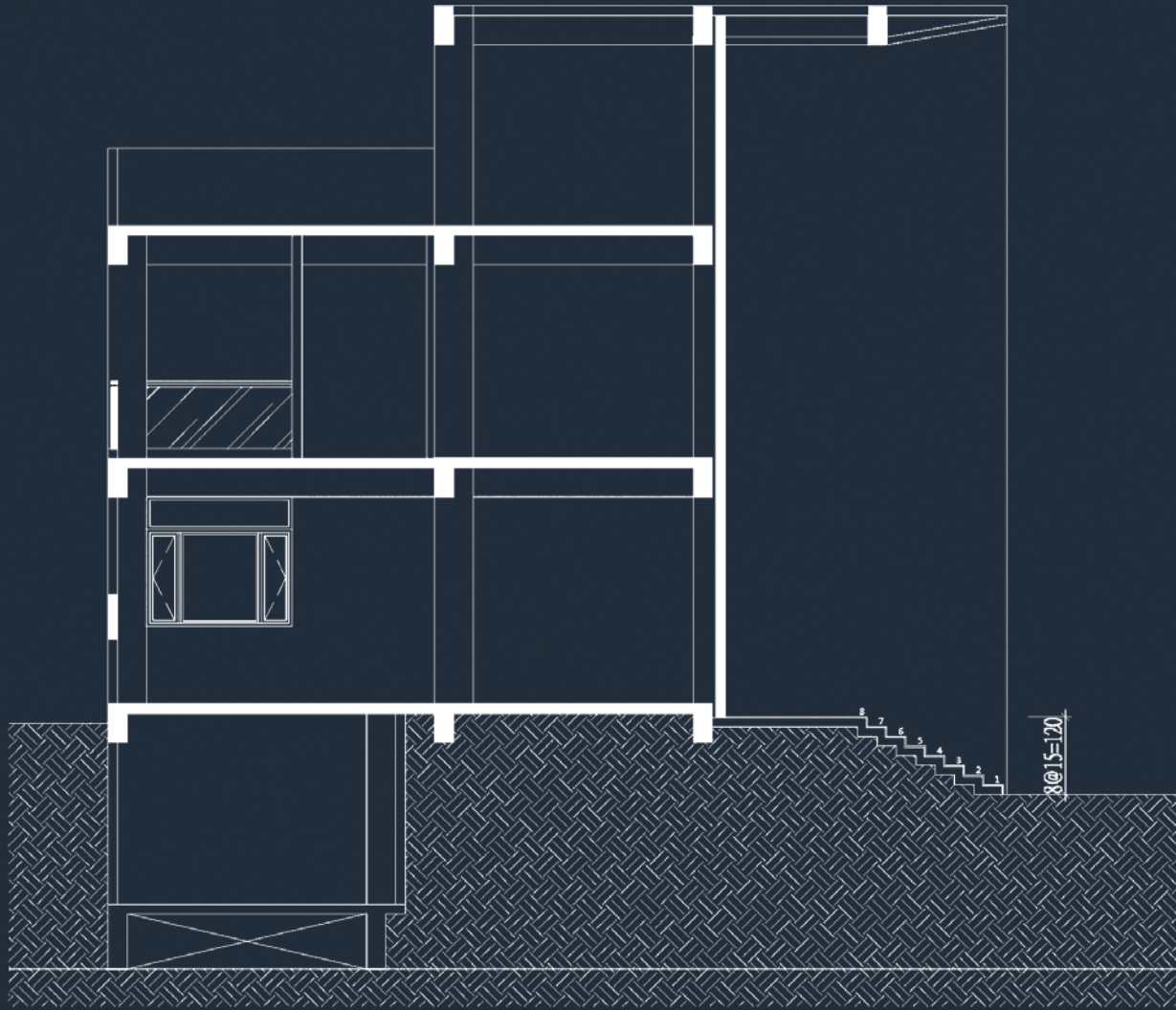
剖面

Firstly, half of the basement depth was dug out, and the rainwater tank culvert was made using the central space. Half a level raised the first floor.



剖面

That was similar to the architectural form of the South Island dwelling (the high-rise house), which can increase the ventilation and moisture resistance.





House Vision

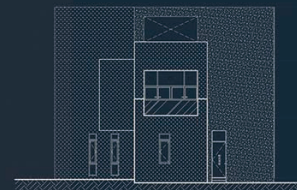
••••

前後棟之間設計了水域與植栽，適宜的間距與通透自然的視野，作為家人連結的開放式通道。

The waters and plants are fixed up between the front and the rear, with suitable spacing and clear view with nature as an open passage for family connections.



利用了超大面積的落地窗，使一樓公共區域能與戶外景觀產生互動，較私密以及功能性需求的空間部分就以實牆與少量開窗。在減少建築耗能的前提下也能保有調解室內通風的效能。





House Vision
家的想像

