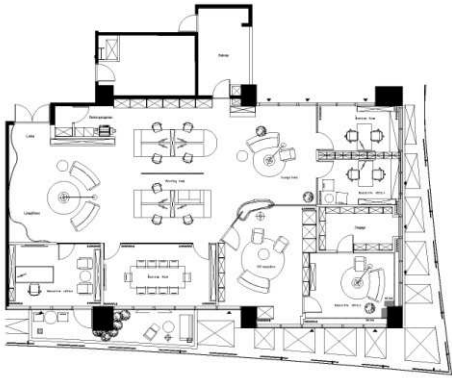


Flow

Completion Time: August, 2018
Location: Taipei City, Taiwan





This is the office of a newly founded venture capital company. Aiming to greet entrepreneurs from promising businesses and international investors, the design of the space was inspired by the client team's youthfulness, the vigorous energy in innovation as well as their adventurous spirit. As daily operations require constant and wide-ranging interaction and discussions, the design is able to provide a free and versatile work environment. The presentation of styling, material utilization, partitioning and furniture layout were all given maximum flexibility to facilitate the diverse choices of usage.



這是一間新創創投公司的辦公空間，訪客經常來自世界各地最具潛力的產業、基金投資人，因此作品的創作靈感來自於該企業所具備的年輕化、創新能量與冒險精神。由於組織的工作模式需要大量溝通討論，無論是風格呈現、材質使用、隔間及家具座椅的配置，均盡可能地保留可變性，為其工作空間提供更豐富而自由的選擇。



Matching with the building's external glass curtain wall, the interior mainly adopts transparent partitions to allow maximum natural lighting and visual translucency. The floor layout mainly uses an open workspace, radiating several individual spaces in various sizes, formats, and functions, provides ideal discussions and thinking corners.



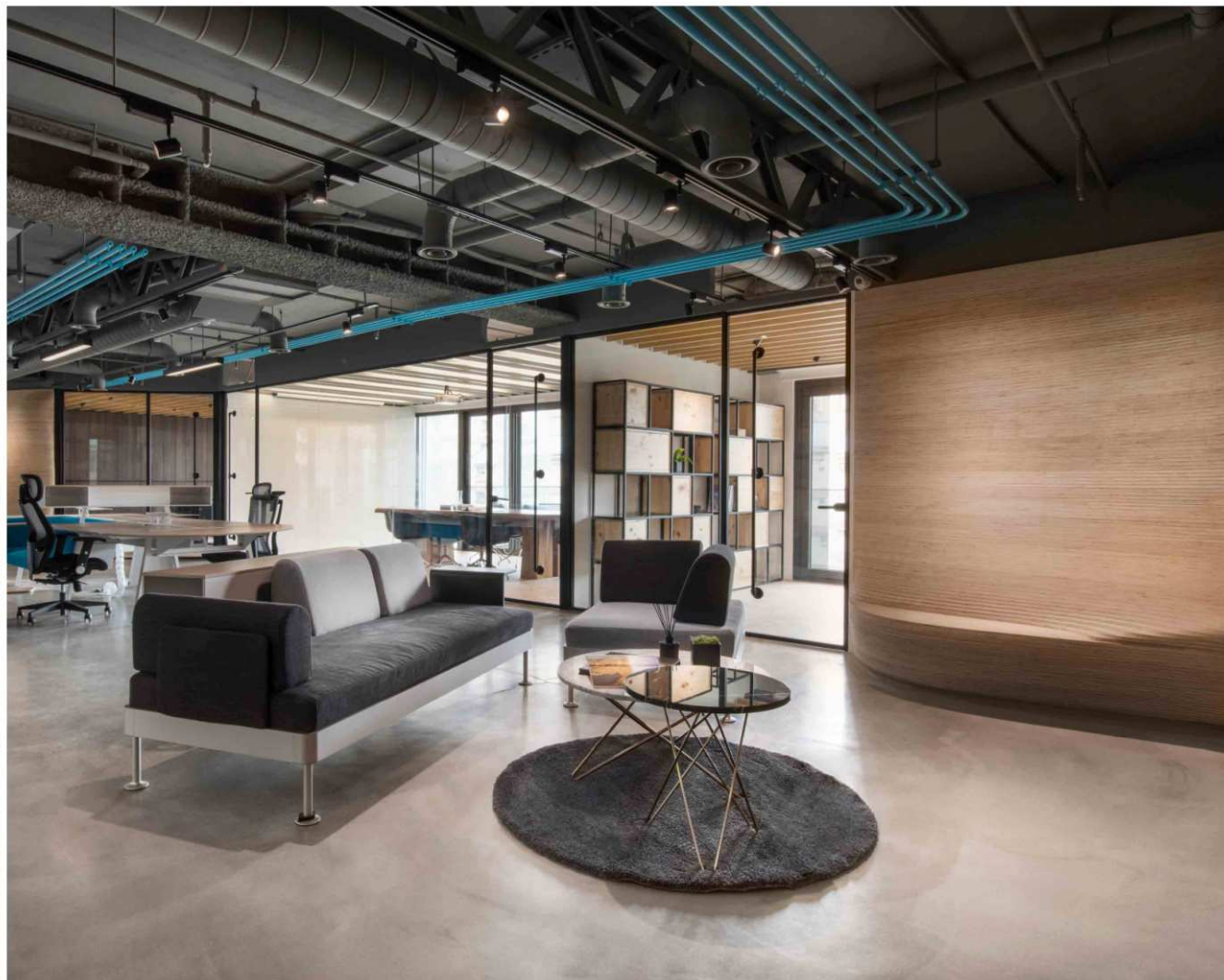
基於建築本身的玻璃帷幕外觀，內部亦大多運用透明材質為隔間，保有最大採光量之餘，也能增加視覺的輕透感。格局的配置以開放工作區為主軸，向外發散數個大小、形式及性質不同的討論與思考空間。

有別於一般企業辦公室於入口設置櫃台的傳統做法，設計者透過一面柔和圓潤的曲形牆與沙發家具，圍塑出入口大廳的接待機能及入口意象。以具流動感的3D連續曲面牆設計，期望打破牆壁給予人的距離感，轉化成能和使用者互動的建築皮層（Architecture Skin），其符合人體工學的凹凸曲線，亦提供可背靠或倚坐的功能；底端短牆延續此一有機線條，將數個不同的空間單元連貫起來，構成一個自然流動的場域。



Contrary to the general corporate office layout which sets the reception counter at the lobby, the design team created a smooth curvaceous wall, complemented with sofa in order to manifest the receptive function and entrance spatiality of the entrance lobby. Hoping to eradicate the sense of alienating, the interactive Architectural Skin was created to fulfill ergonomic sitting areas, while such organic line work would connect different interior spaces to form a spatially flowing domain.

在核心的開放式辦公區內，藉由可自由增減、位移的櫃體和可移動的玻璃隔屏，塑造出具靈活性與可用性的空間特色。兼有雙面白板功能的半透明玻璃隔屏及嵌入辦公桌的轉向沙發，使得任何角落都能適切的產生易於討論的氛圍，幫助溝通及對話，也能隨時因應成員的增減或不同的工作形式，做空間配置的變動調整。

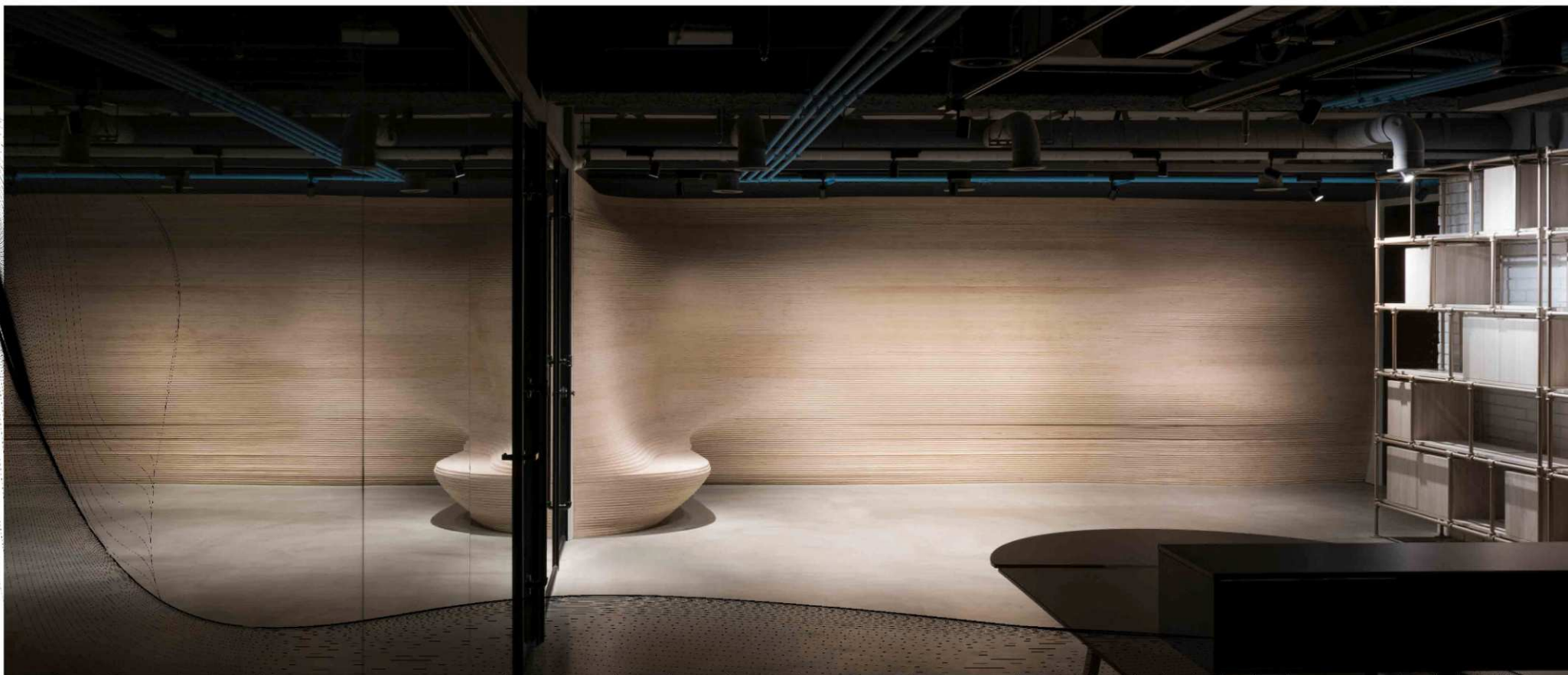


此作品設計起點以人的行為為始，著眼於「人與人」及「人與空間」的互動，而非單純從機能或風格層面考量。特別是入口處的3D曲面牆設計，無論是造型、材質選用，均旨在於增進人對於牆面可使用與可觸摸的體驗，既模糊了空間的界線，也為此開放式工作區注入活力；

Within the core open office area, flexible cabinet volumes, along with moveable glass partition screen, it gives the space more possibilities to adapt the users' needs. With translucent glass partitions that also serve as double-sided whiteboard, and the office desk is embedded into rotating sofa, make communication and conversations more efficient and convenient. Besides, the space layout is adjustable to suit all personnel or different work forms.



The focus on human behavior is the anchor of this design piece. Interaction between users in a space is essential, besides its functionality or style. The form and material of the G2 Conitnuous 3D freeform wall at the reception area, help to improve the users' experience. It blurs the boundary between wall and furniture, so as to enrich user experiences of touchable and tactile, infuses liveliness into the workspace. The eco-sustainable surface material, commonly used as underlay boards (Birch Plywood), is chosen for precisely slicing and stacking via parametric design method. This adoption enables partial replacement flexible. Users' touch on the unpolished surface adds historical feature to the wood texture and color over time, in the gesture of realizing a spatial sustainability concept.



此外，牆面材質取自經常被作為底材的樺木夾板，並透過參數設計加以精密切割拼疊製成，不僅具備可局部更替的彈性，未上漆的木材經觸摸使用後，質感和色澤會隨時間而變化產生不同的風貌，也為此年輕的創新環境落實永續使用的理念。

