

雲氣水集

Cloud, Air and Water

案位於台北市商業中心的高樓層辦公建築，原為五個獨立小型辦公室，設計者以「流動」的概念，藉由「上天下地的流水」，將獨立小空間串聯，寓意無遠弗屆的鏈接，呈現網網相連的特徵，形塑網路科技辦公空間意象。

This project that was originally five independent small offices is located at high floor office building in Taipei commercial center. With the concept of "flow", the designer connected small independent spaces in series through "water is flowing from heaven to the earth" to boundlessly link the implied meaning of the world, presenting the characteristics of website links and shaping the image of network technology office space.

設計概念來自「水的流動」與「氣的聚集」，以『雲、氣、水、集』表達「水昇華為氣，氣聚集為雲，雲凝結為水，水返流大地」生生不息的觀念，循環永續主導本案的設計創意。

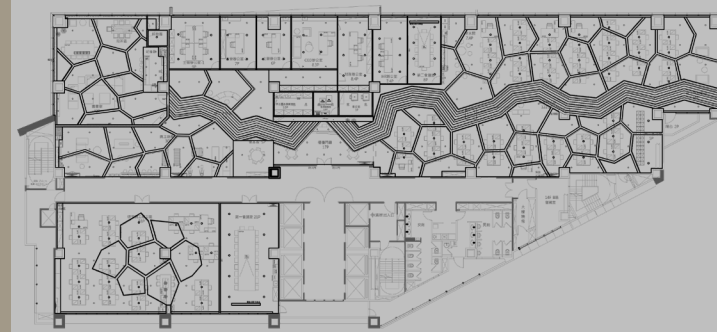
The design concept comes from "the flow of water" and "the accumulation of air" to express the idea of endless life with "cloud, air and water" for "the sublimation of water into air, the accumulation of air into cloud, the condensation of cloud into water, and the return of water to the earth", and the design creativity of this project dominated by the cycle of sustainability.





象徵天空的雲朵的五角形立體天花板，片片相連造型獨立又彼此契合，鏈接雲朵的閃電造型格柵，寓意快速往來的穿流人潮，呈現辦公行為的高效率。

The pentagonal stereoscopic ceiling that is connected to fit with each other in independent shapes symbolizes the clouds in the sky, and the lightning grille that links clouds symbolizes the rapid flow of people and shows the high efficiency of office activities.



地坪鋪面使用色彩對比表現空間中的流動，從開放到私密的區域，流水造型暗示動線所在，也與天花的雲朵呼應，雲起氣聚水流人合，正向循環且生生不息。

Floor paving uses color contrast to present the flow in the space, from the open to the private area, the running water shape suggests where the traffic flow is, also echoes with the cloud in the ceiling; clouds from the air gather people together for positive circulation being born and born again.





休憩區的造型家具宛如寧靜的駛入停靠的潛艇，讓休憩的氛圍得以自然無聲的表現，運動器材則在腦力激盪時適時提供舒壓的功能。

The furniture in the rest area is just like a quiet submarine entering and docking, which makes the atmosphere of rest to be natural and silent expression, while the sports equipment provides relief during brainstorming.



貴賓室主牆面使用灰白石材與鑽石切割的造型吧檯，表達賓客的尊榮，西式的大型休閒沙發混合中式古典家具，低調內斂卻豪邁大器，適度反應業主的企業精神。

Grey-white stone material is used to build the main walls with diamond-cut modeling bar in the VIP room to express the honor of the guests, and western-style large recreational sofa mixes classical Chinese style furniture, low-key inside and reserved but heroic and generous to moderately reflect the owner's enterprise spirit.

