



FLYING



The project is located at Jiangyin city, the center of the Yangtze River Delta urban economic planning zone. The Yangtze River Delta is the largest economic development planning zone in East China. The Yangtze River is China's largest river, and it has nurtured the advanced Yangtze River Economic Belt. Jiangyin is located on the edge of the Yangtze River. Designers use the advantages of geographical location to create an urban art experience center, which symbolizes the expectation for the city's future development.



There is a lack of landmarks and a lack of urban vitality

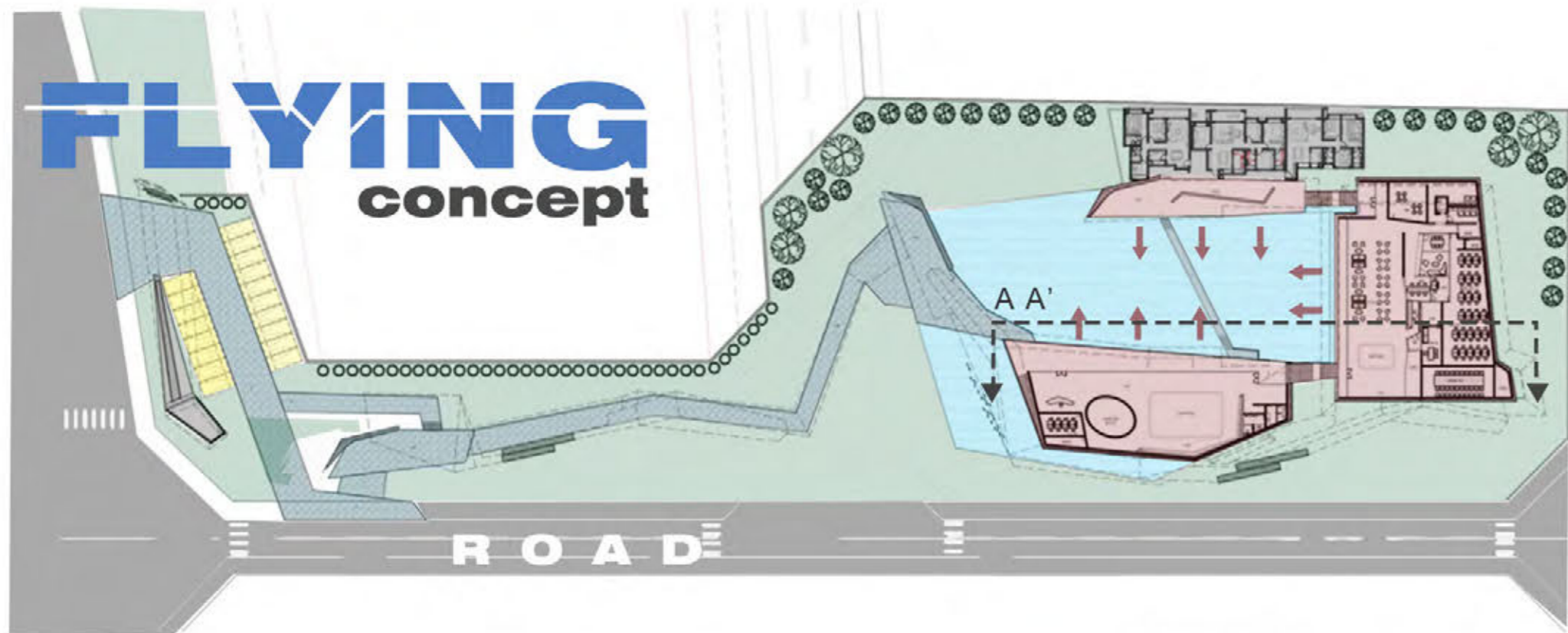
Given the tasteless urban planning and uniform architecture widely seen in today's China, a people-oriented culture will probably help city stand out.



In this case, two large building blocks were designed, from one building to another, and the overall structure presents high and low moving lines. Moving through the winding path, we'll see the city exhibition hall in the main display area, forming a multi-functional space in a surrounding structure.

Urban development take-off

FLYING concept

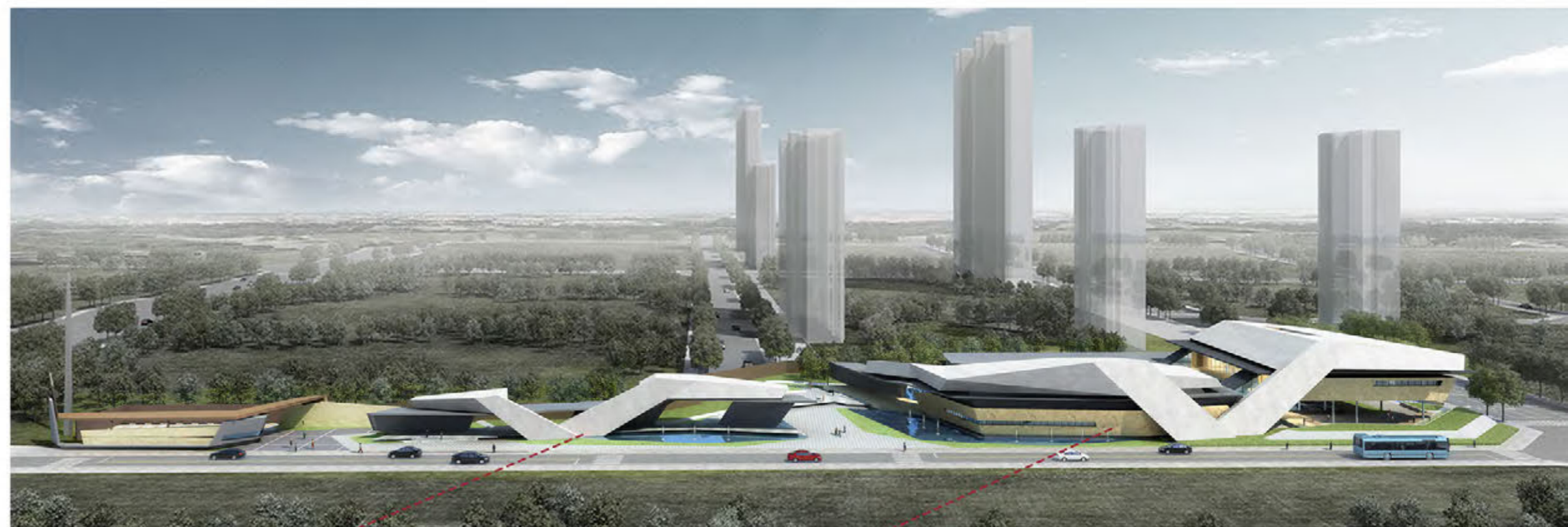


- City Experience Center
- Lawn
- Pavement
- Pool
- ➔ Sight

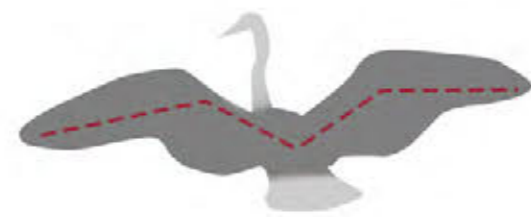
In this case, two large building blocks were designed, from one building to another, and the overall structure presents high and low moving lines. Moving through the winding path, we'll see the city exhibition hall in the main display area, forming a multi-functional space in a surrounding structure.



SECTIONAL VIEW A A'



It is hoped that it will represent the development and take-off of the city in the Yangtze River basin, and lead the Jiangyin citizens to witness the leap of the city. Therefore, it is named as the "flying".



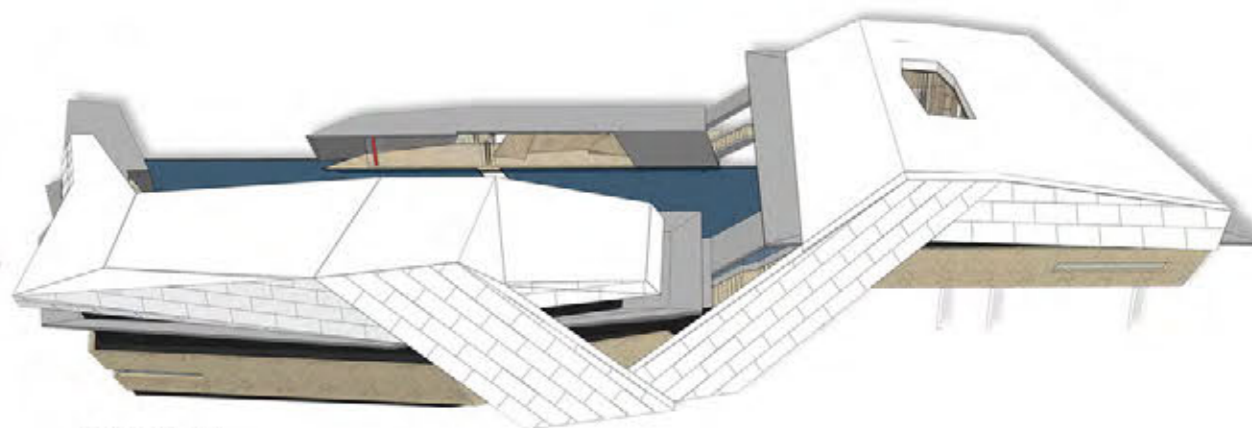
Wings



Fiying



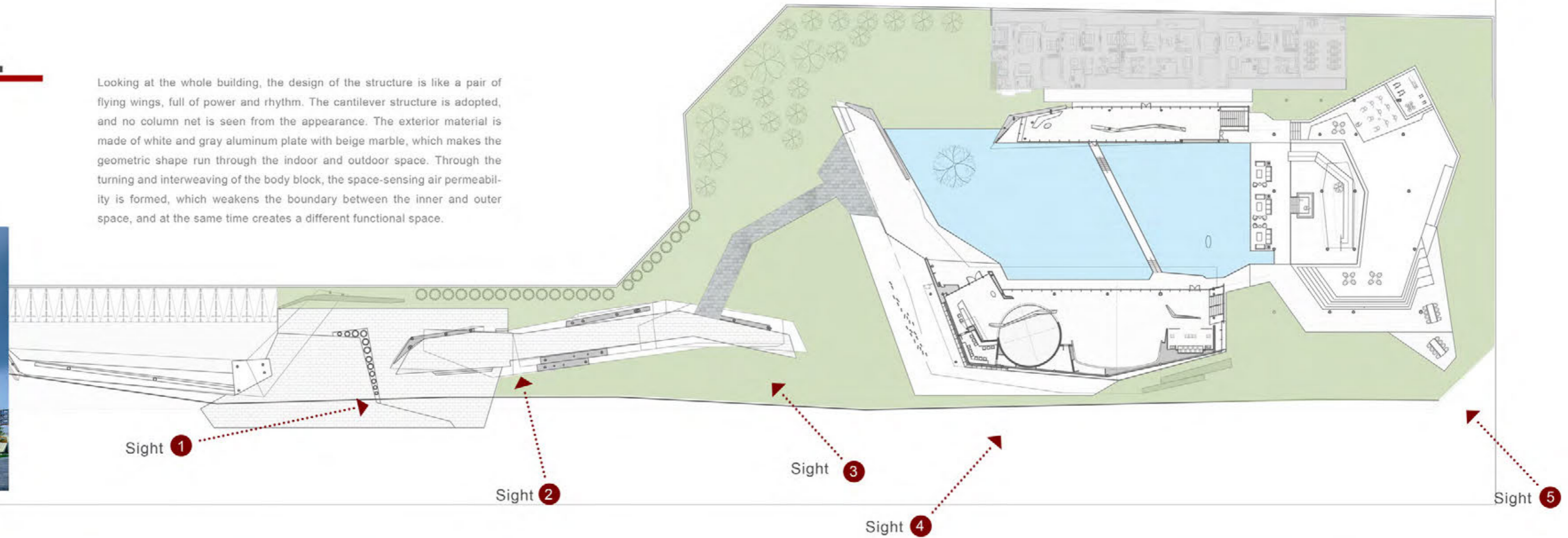
Form



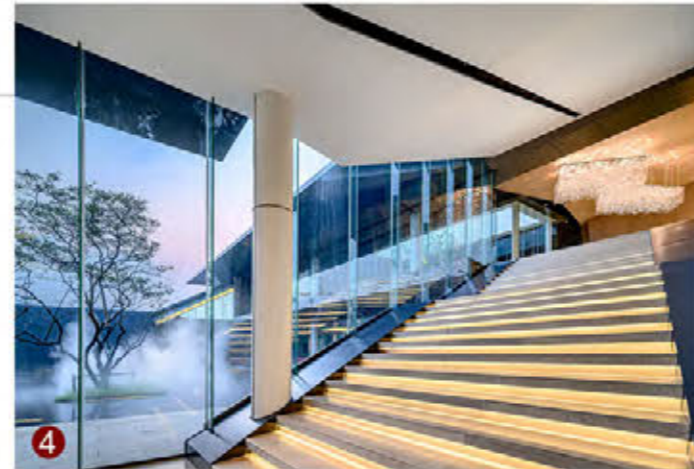
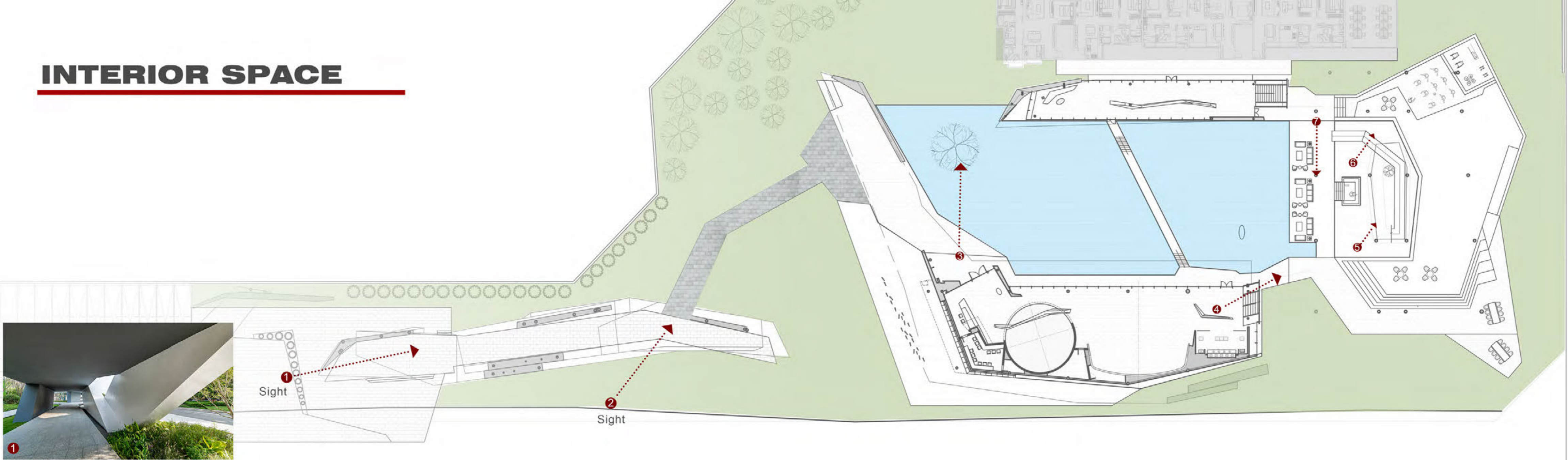
Function

ARCHITECTURAL SPACE

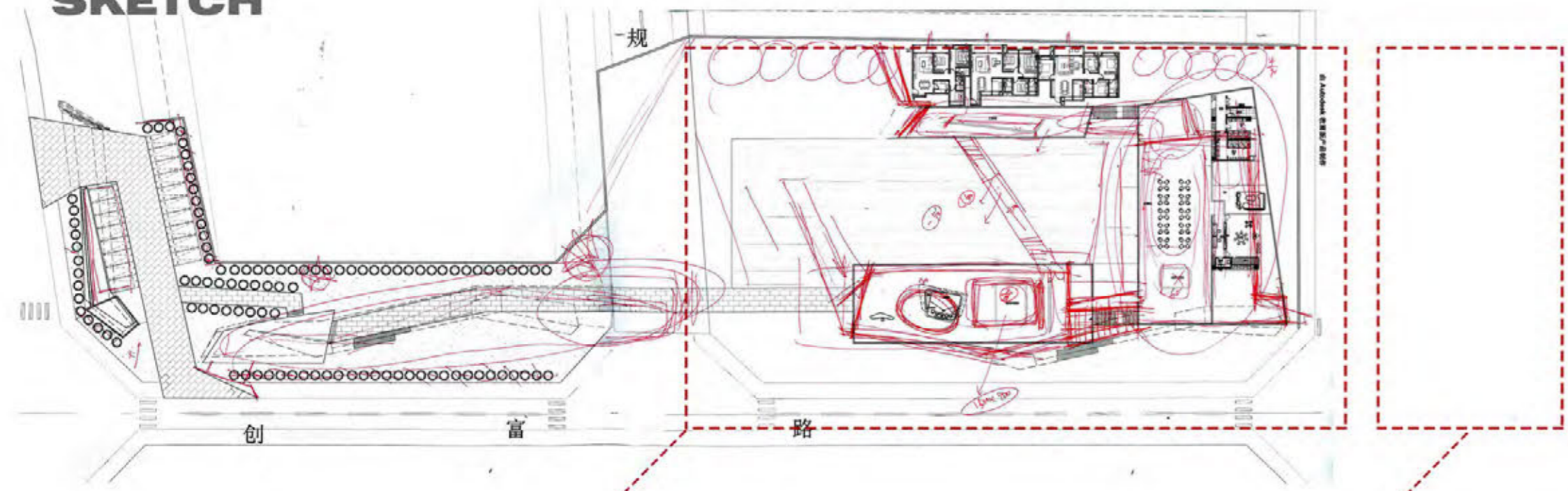
Looking at the whole building, the design of the structure is like a pair of flying wings, full of power and rhythm. The cantilever structure is adopted, and no column net is seen from the appearance. The exterior material is made of white and gray aluminum plate with beige marble, which makes the geometric shape run through the indoor and outdoor space. Through the turning and interweaving of the body block, the space-sensing air permeability is formed, which weakens the boundary between the inner and outer space, and at the same time creates a different functional space.



INTERIOR SPACE

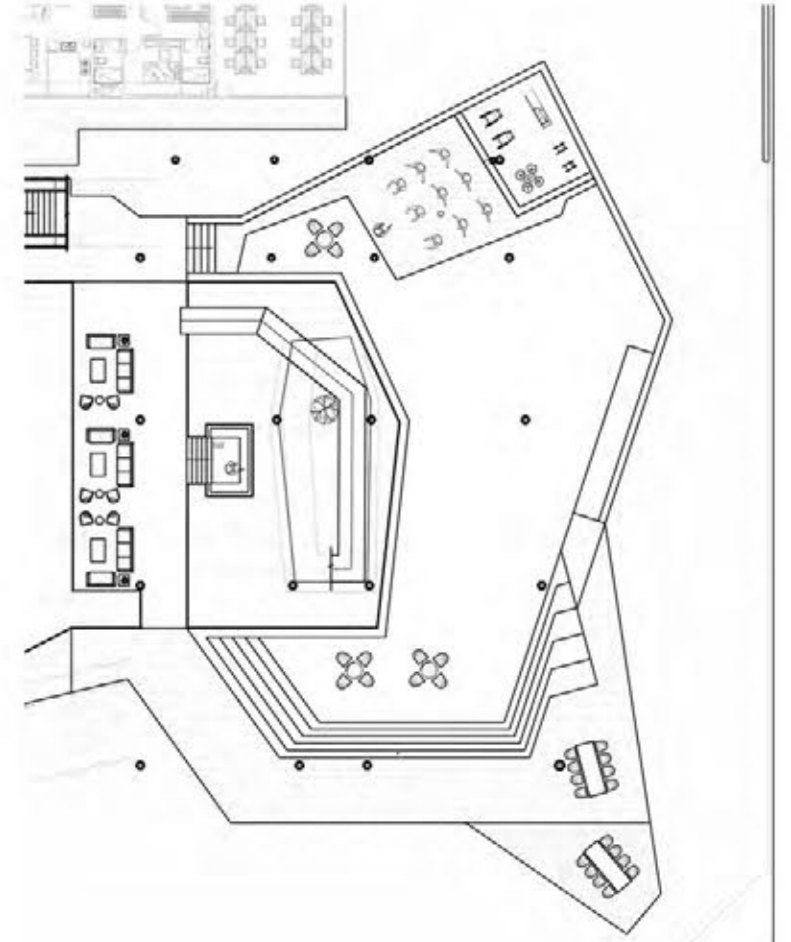
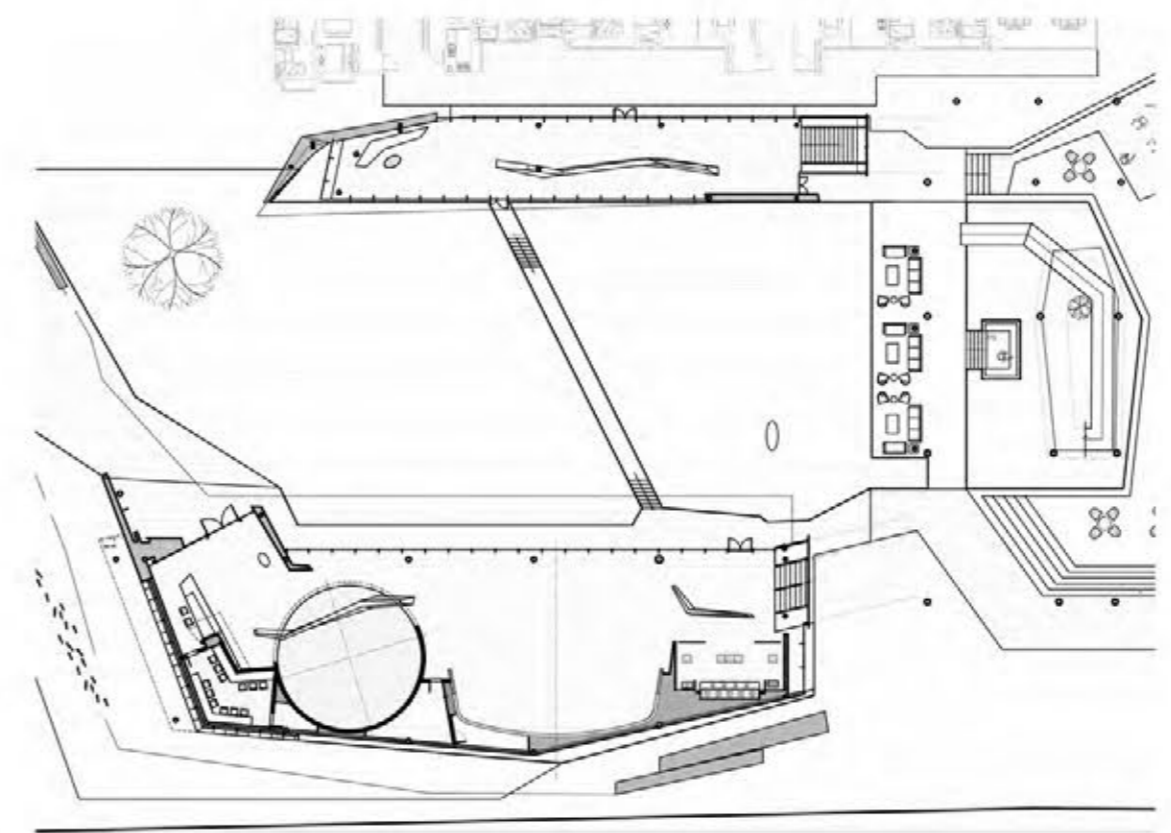
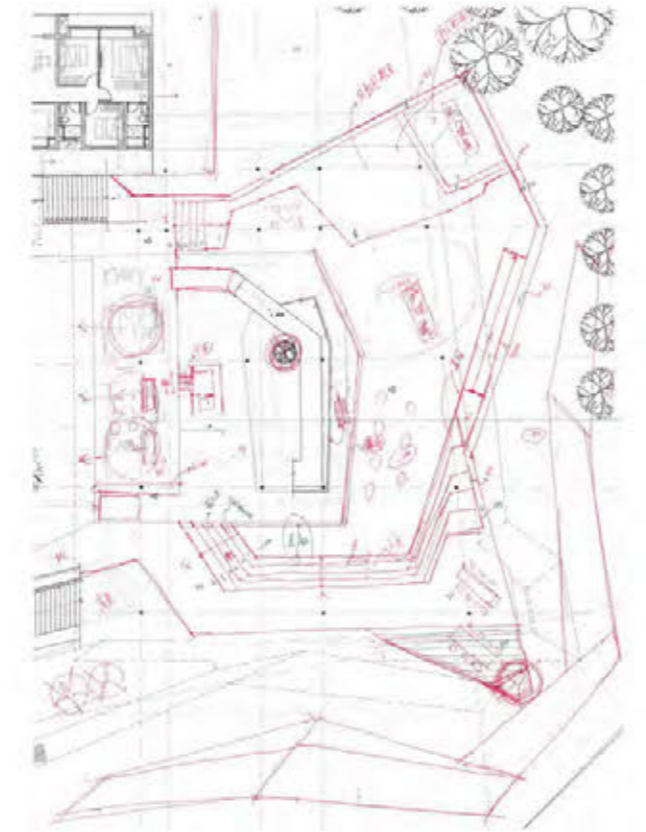
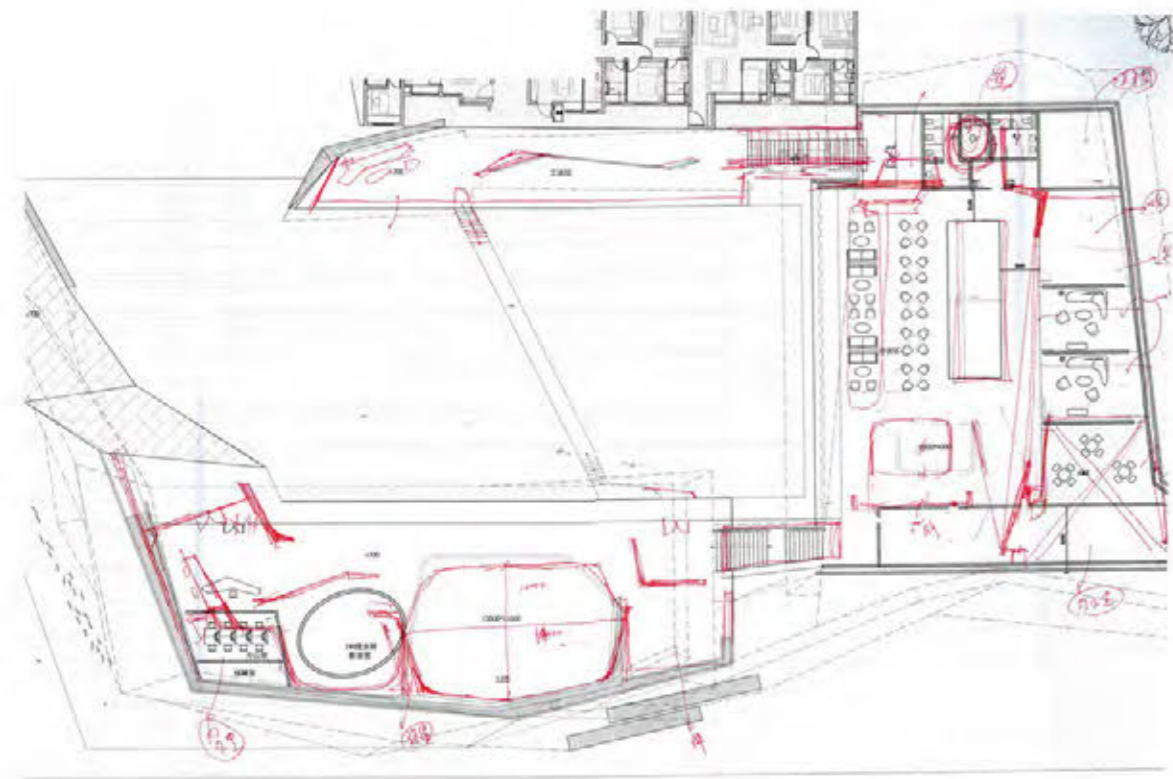
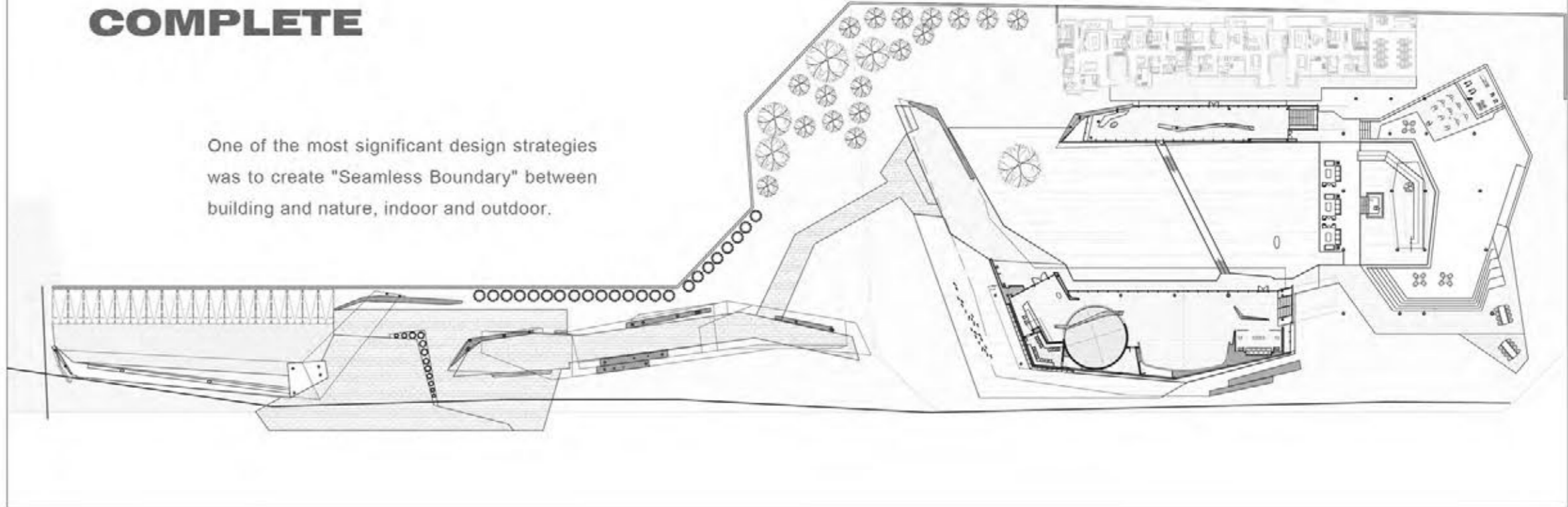


SKETCH



COMPLETE

One of the most significant design strategies was to create "Seamless Boundary" between building and nature, indoor and outdoor.





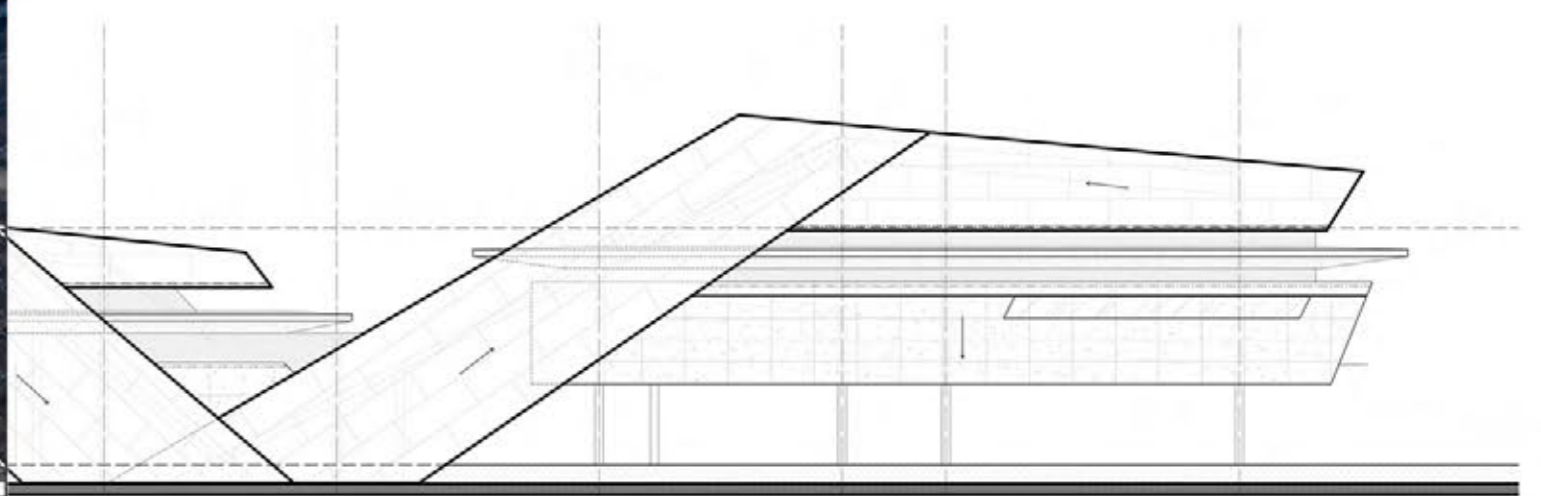
Looking at the whole building, the design of the structure is like a pair of flying wings, full of power and rhythm. The cantilever structure is adopted, and no column net is seen from the appearance. The exterior material is made of white and gray aluminum plate with beige marble, which makes the geometric shape run through the indoor and outdoor space.







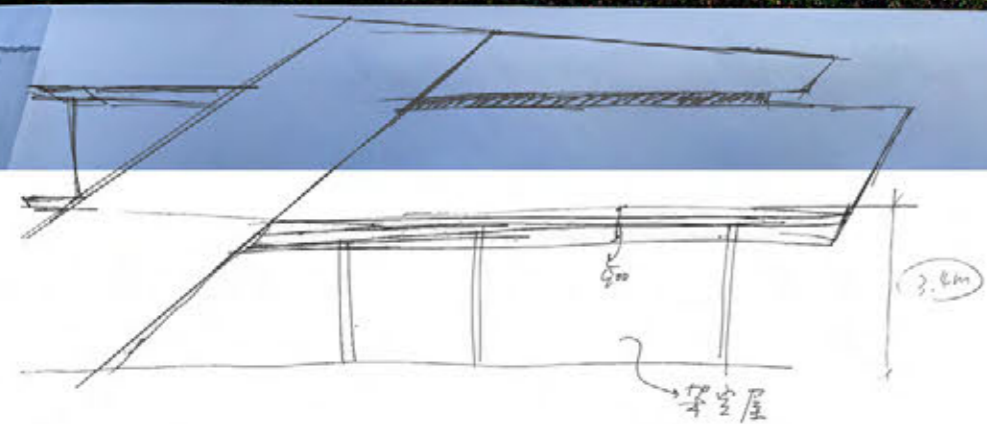
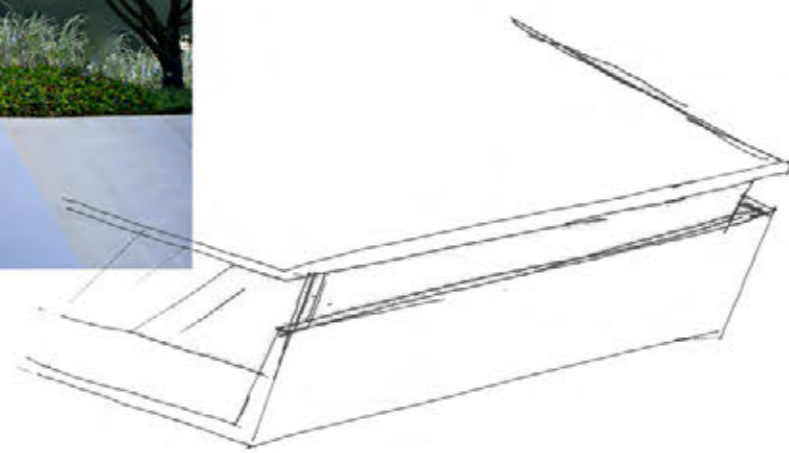
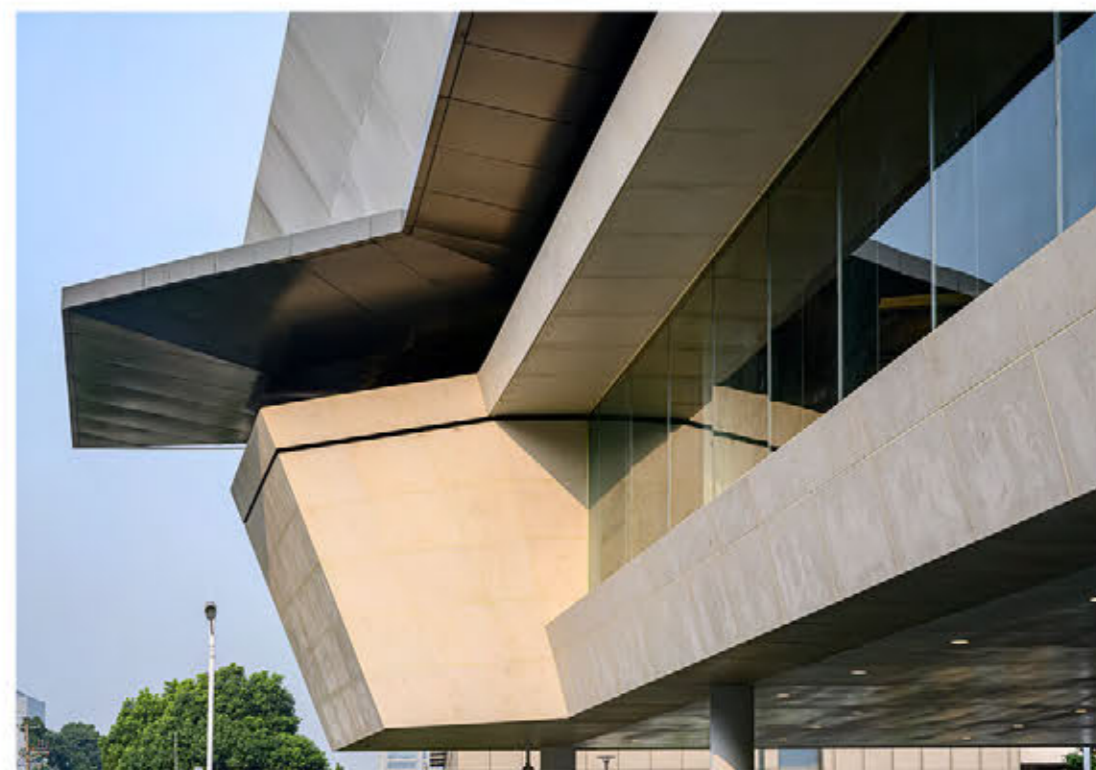
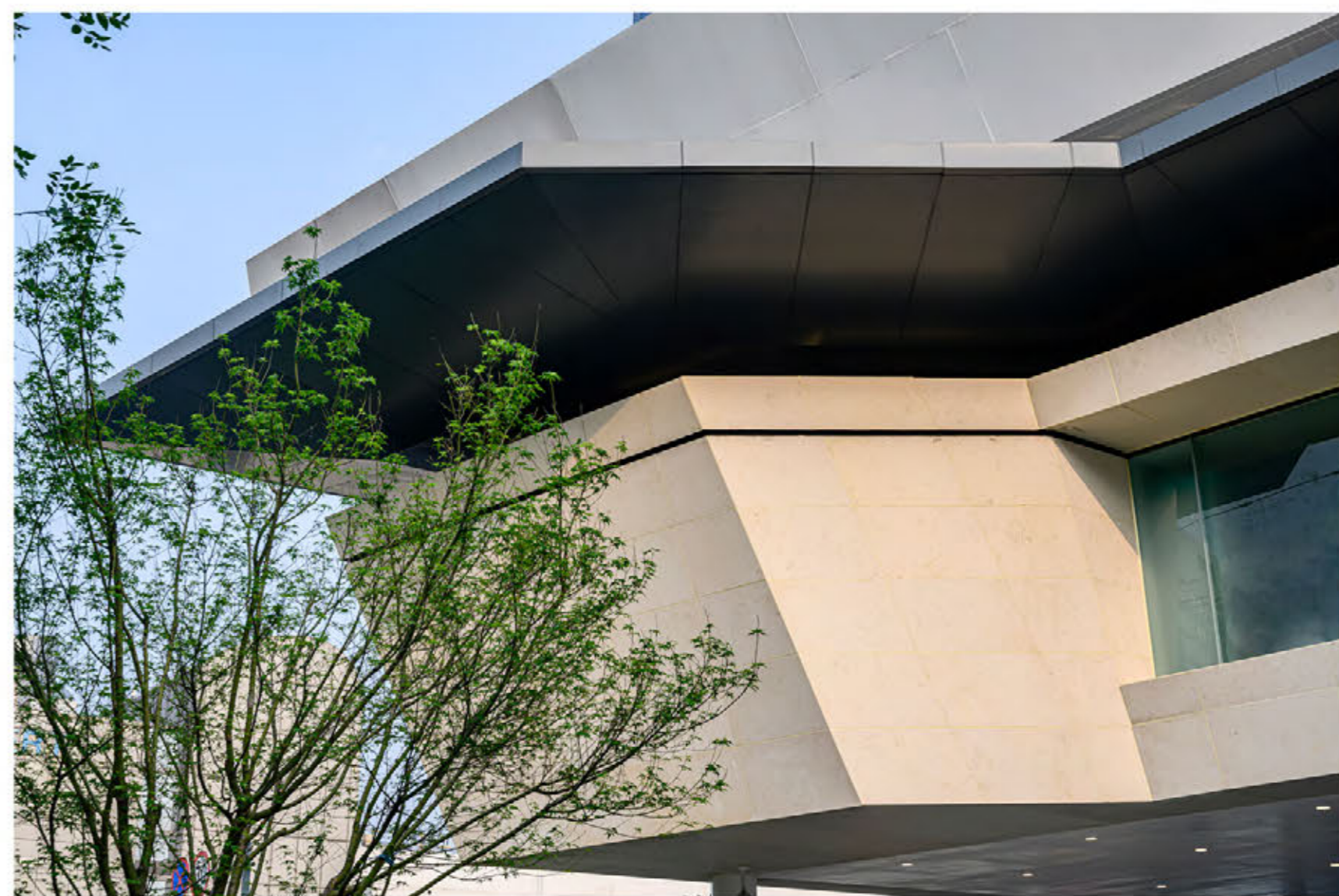




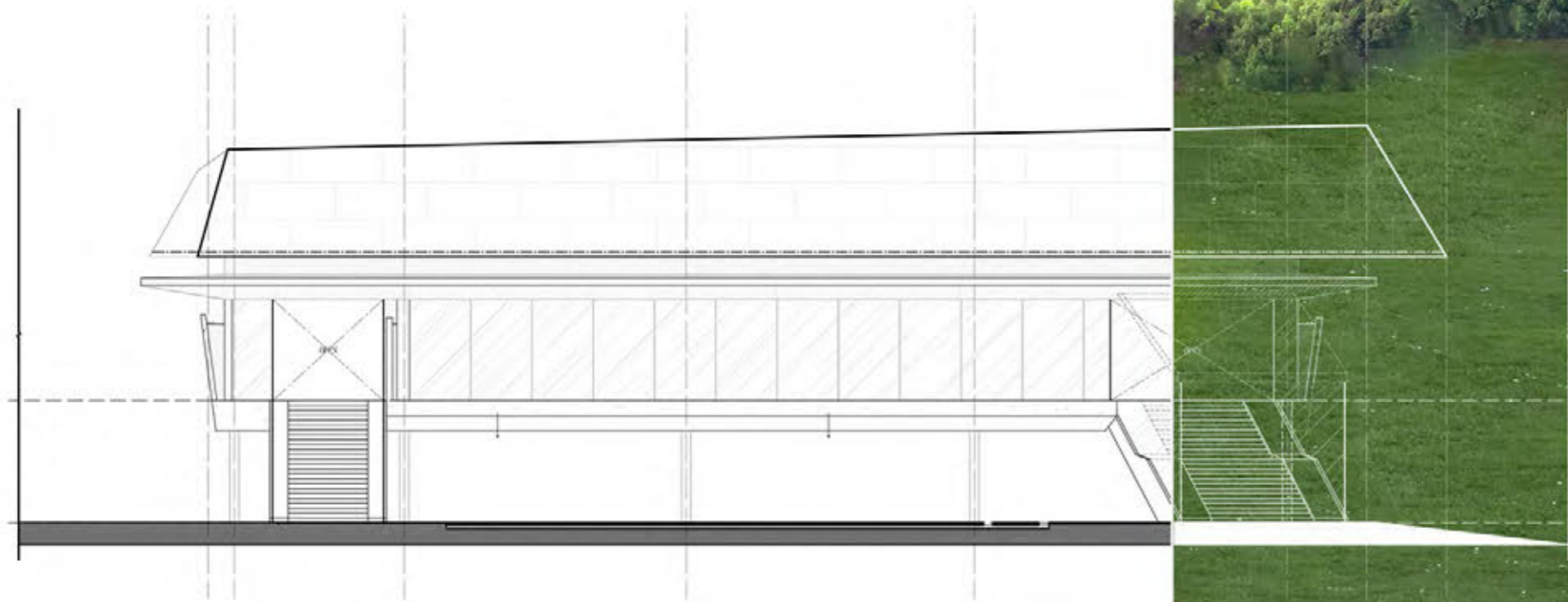


Through the turning and interweaving of the body block, the space-sensing air permeability is formed, which weakens the boundary between the inner and outer space, and at the same time creates a different functional space.



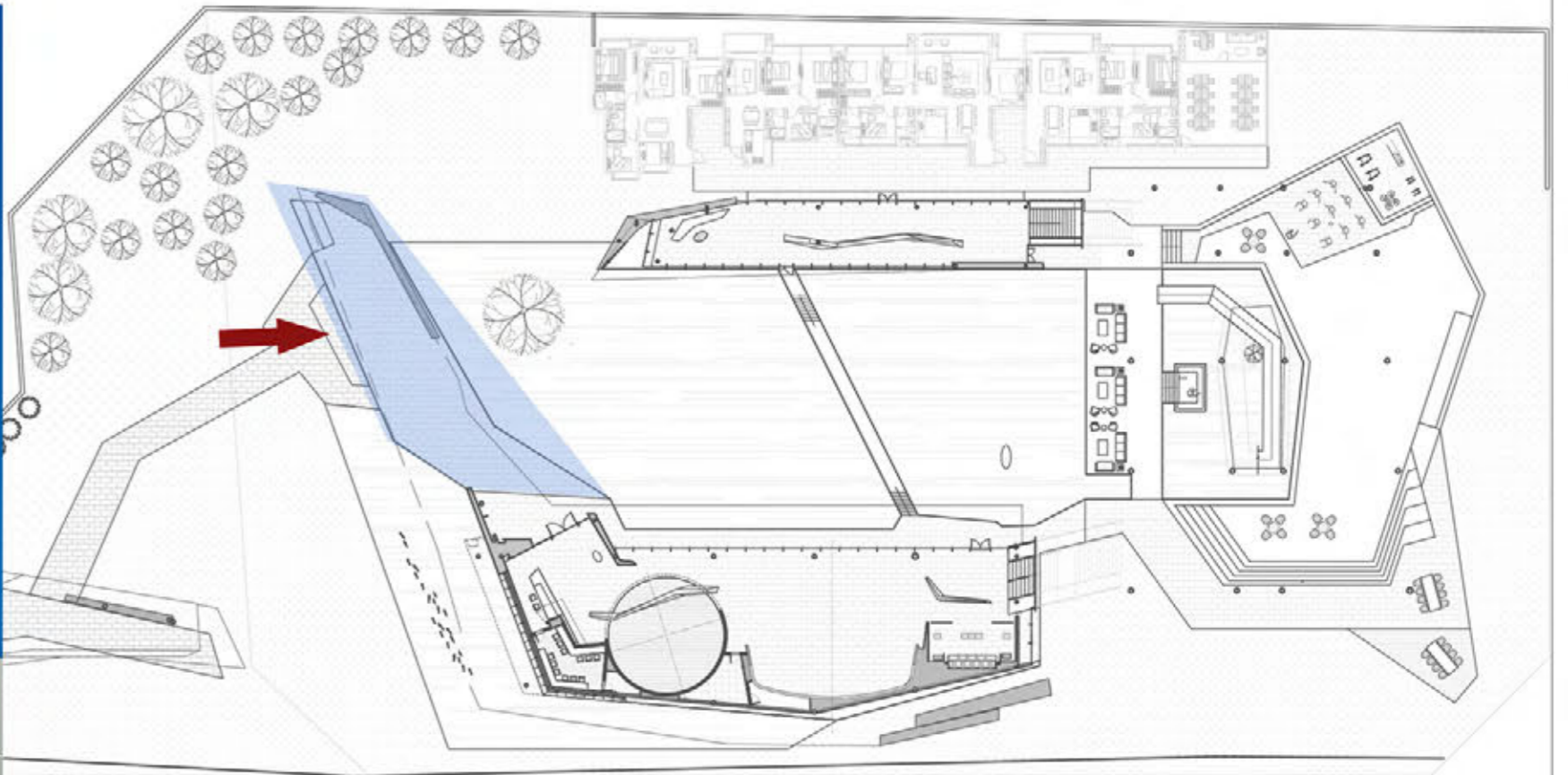




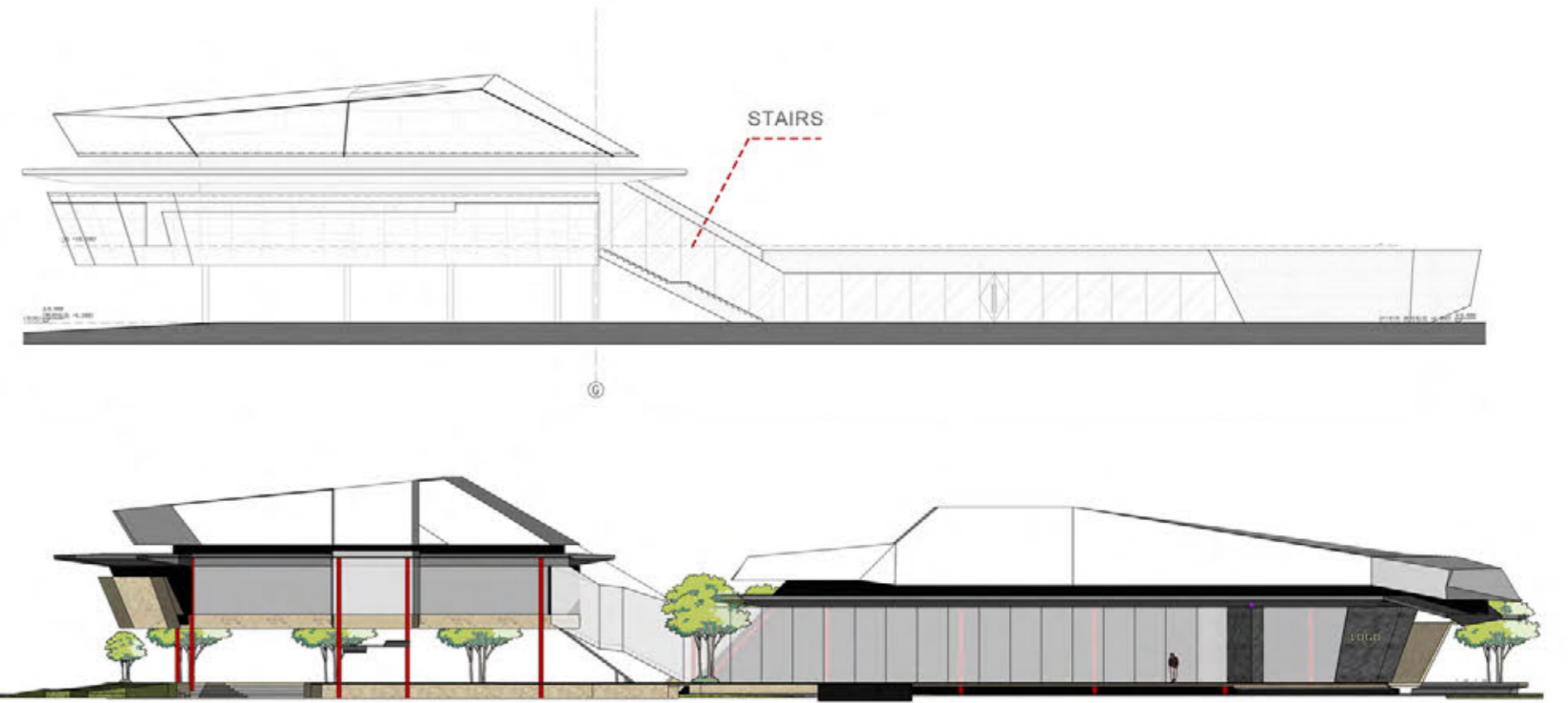


Entering the city exhibition hall from the entrance of the building, and stepping up, you will come to the independent multi-functional display area. As an important display area of the case, the wooden facade material continues the geometric elements outside the building, with large glass walls. The curtain wall gives people unlimited landscape enjoyment, which is the best way for people and space to communicate. The central location of the recreation area is designed as an independent landscape. As a highlight, the central landscape is designed with a back-shaped slope that connects to the lo



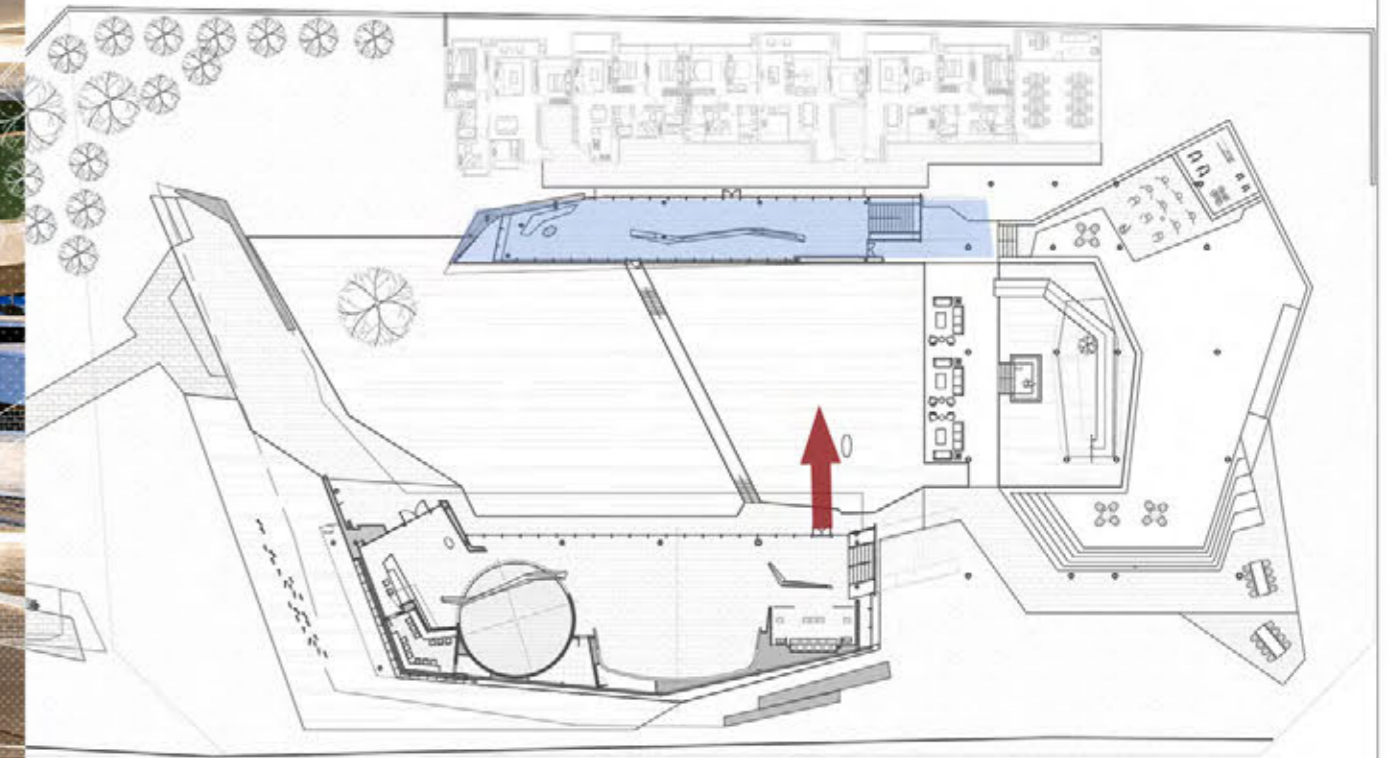
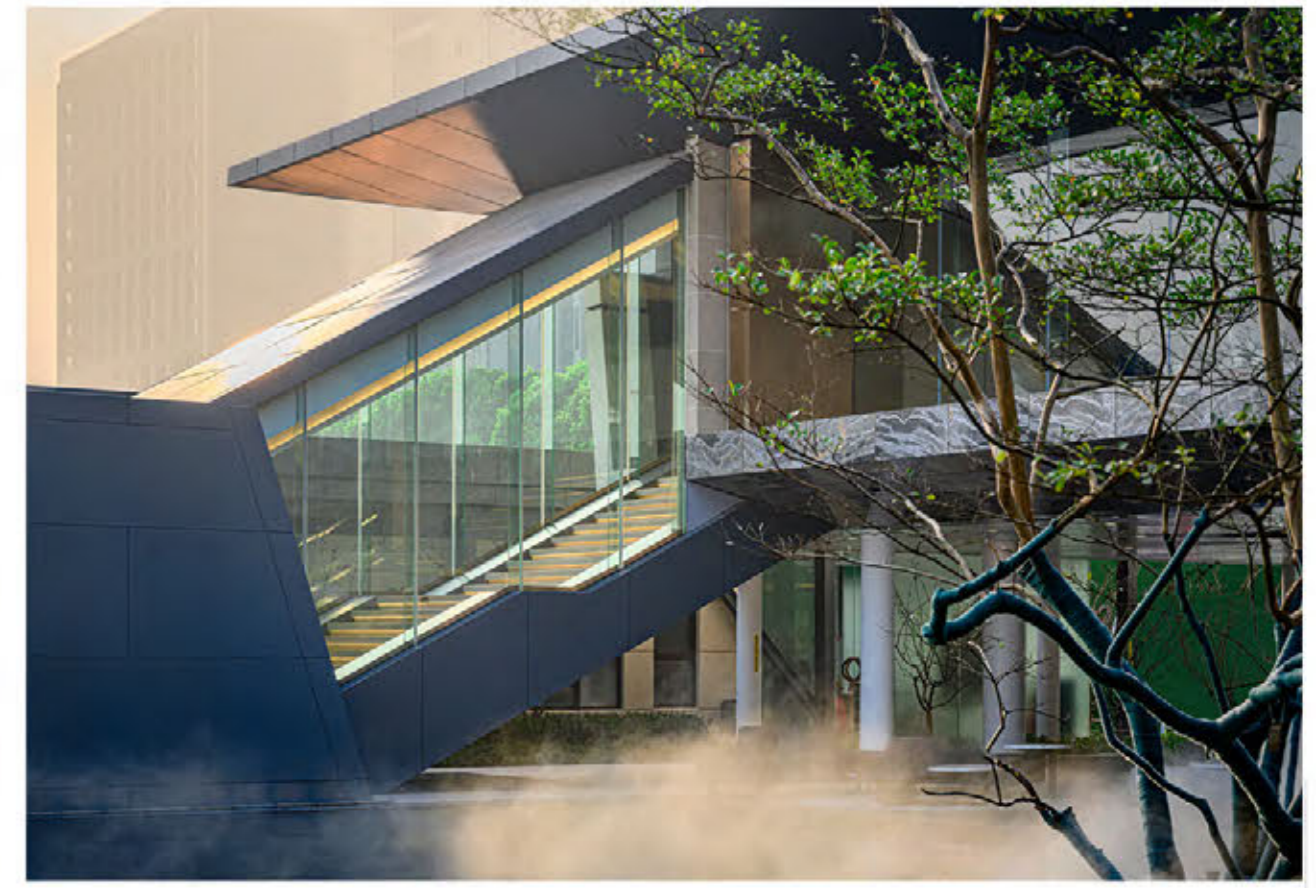






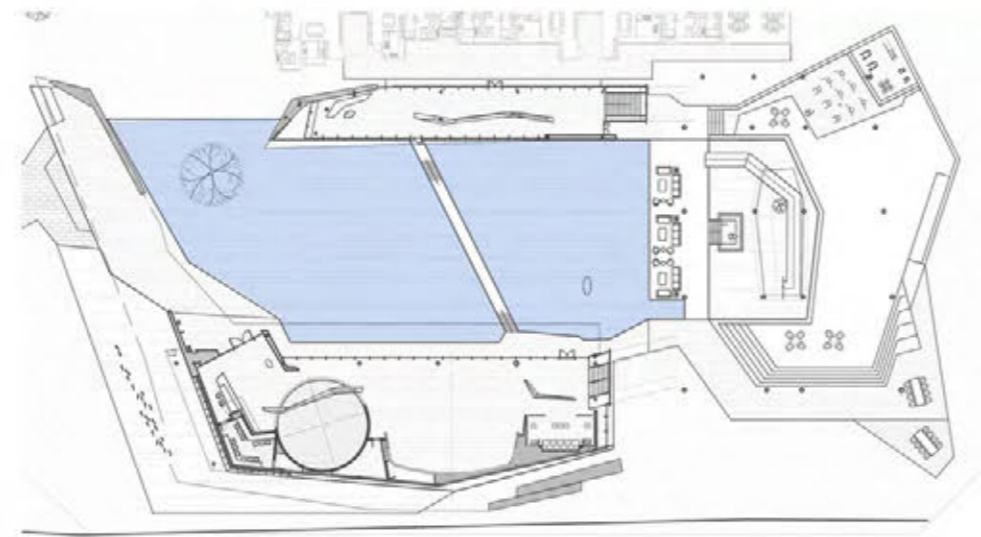
In the combination of the two major building blocks, the surrounding spatial moving line includes a large area of waterscape, and the designer uses modern landscaping techniques to explore the interaction between architecture, humanities and the environment.

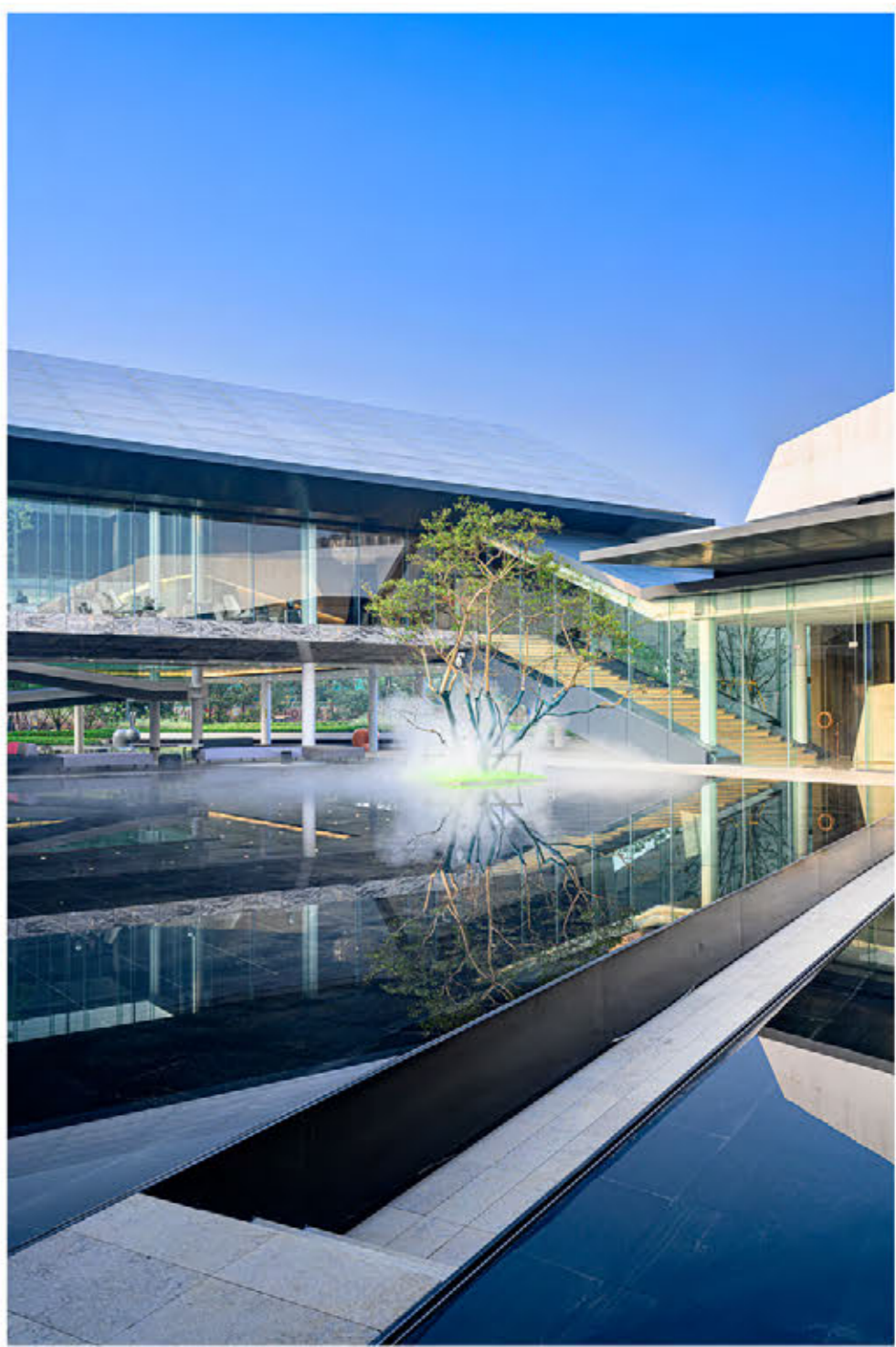
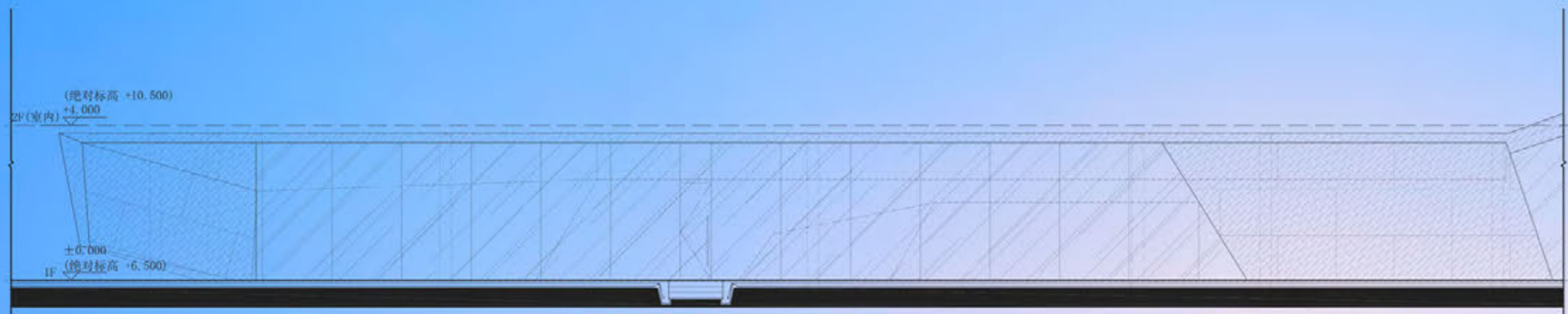


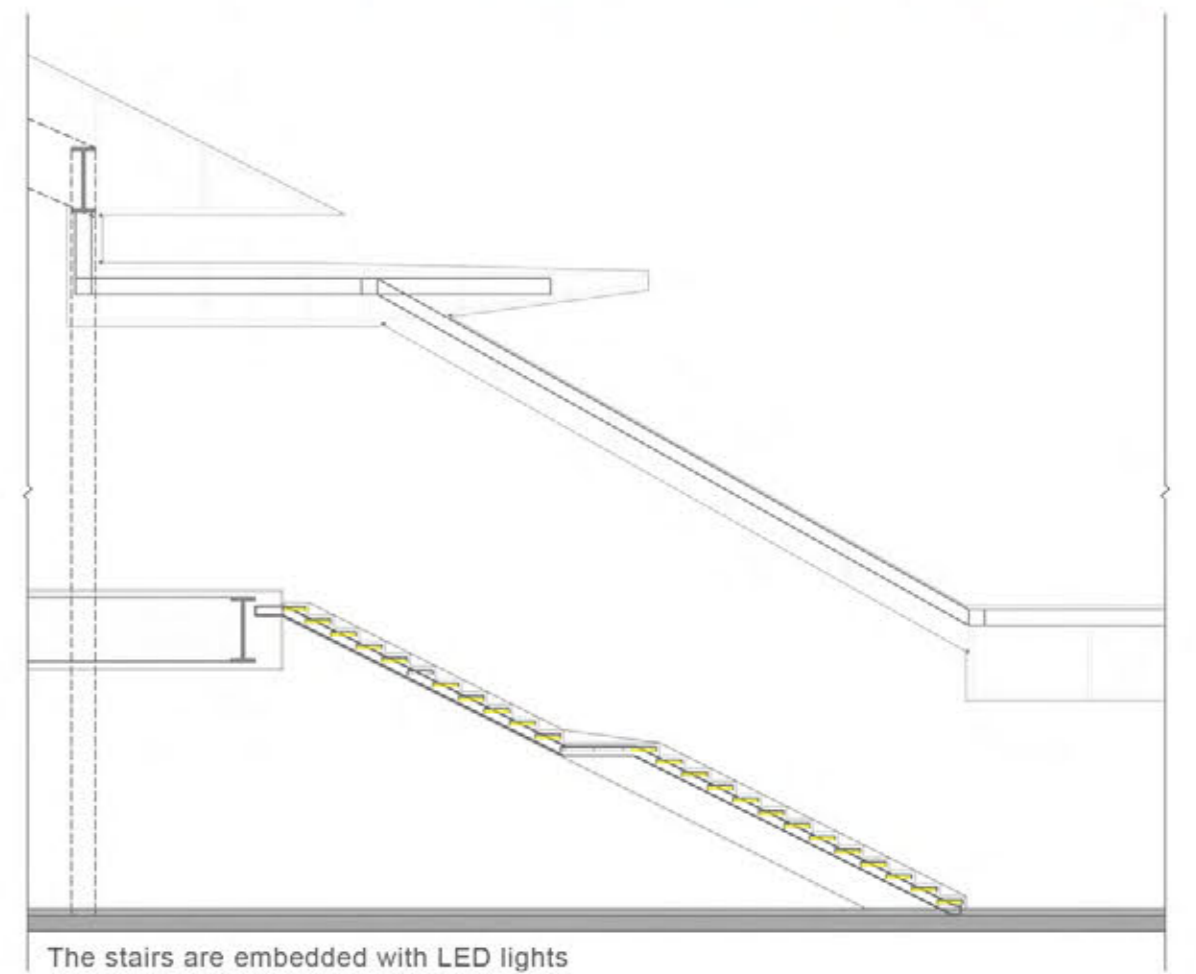




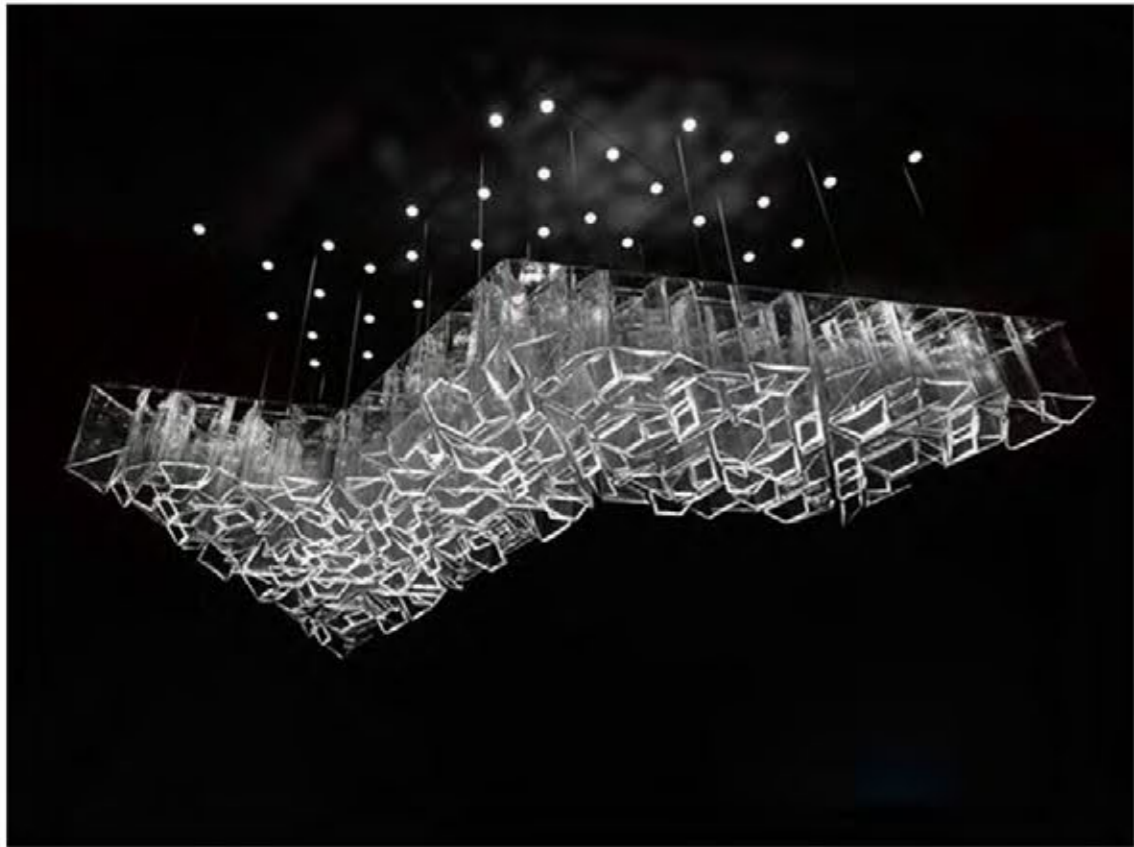
The center of the waterscape is designed with a quiet path that runs through the multi-functional display experience area. The mirrored infinity pool on both sides of the trail serves as a unique natural landscape, strengthening the overall relationship between the building and the water symbiosis. The natural water storage steps weakens the height difference between the lake scene and the aisle and shows the rhythm and layering between the spaces.



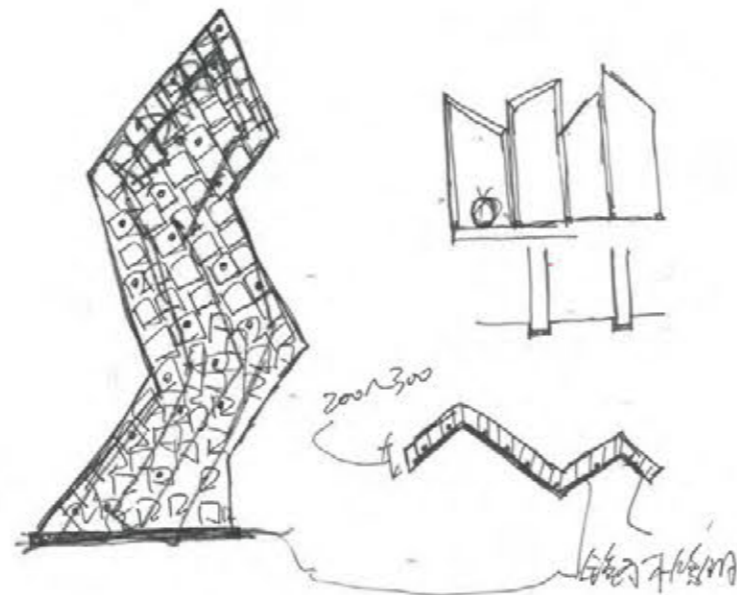
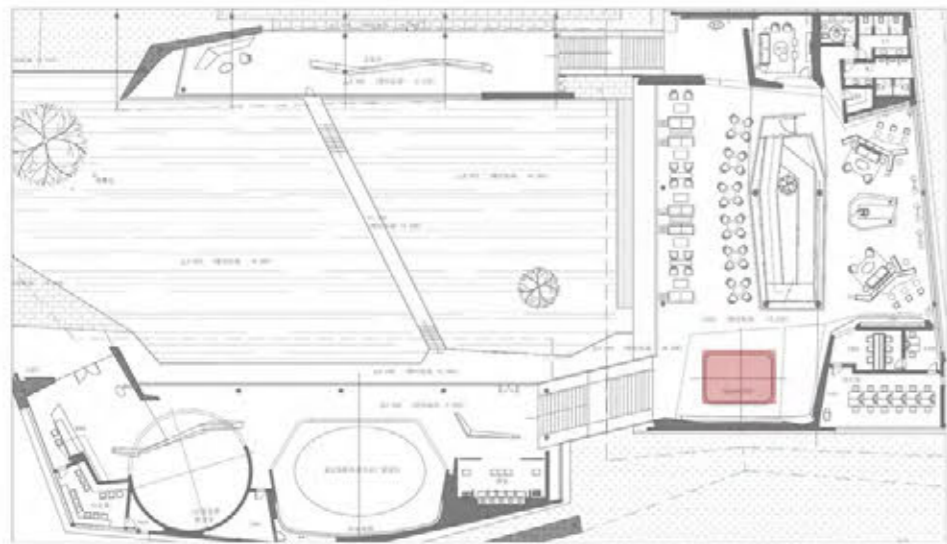


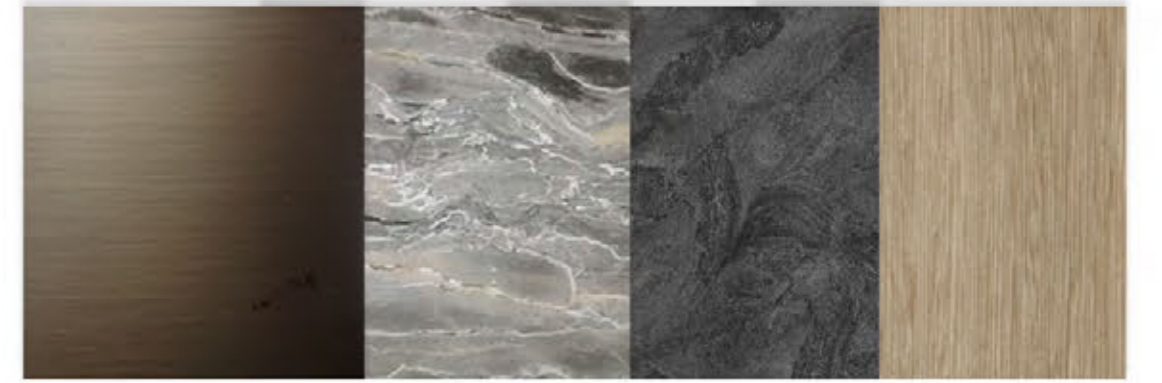


The stairs are embedded with LED lights

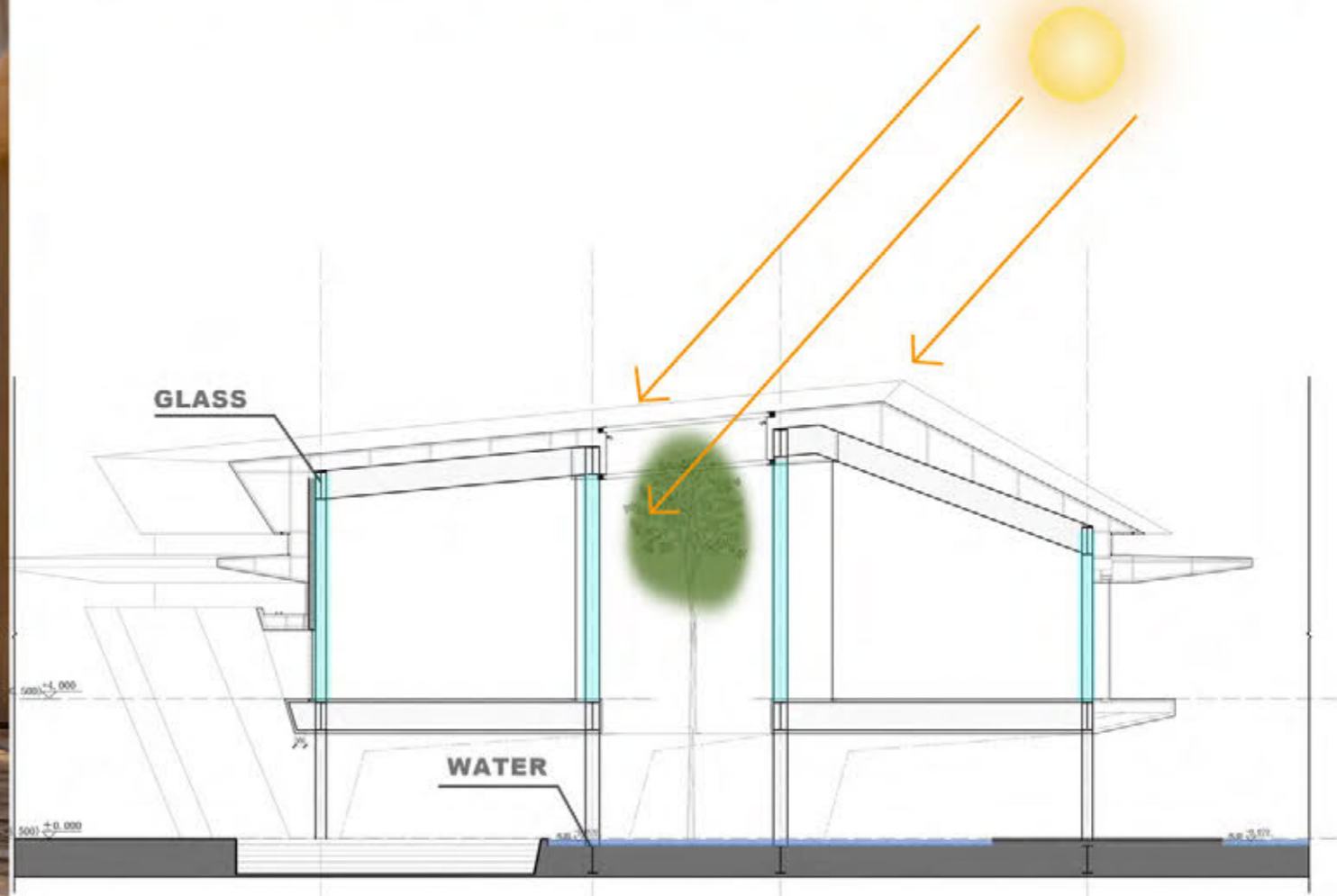
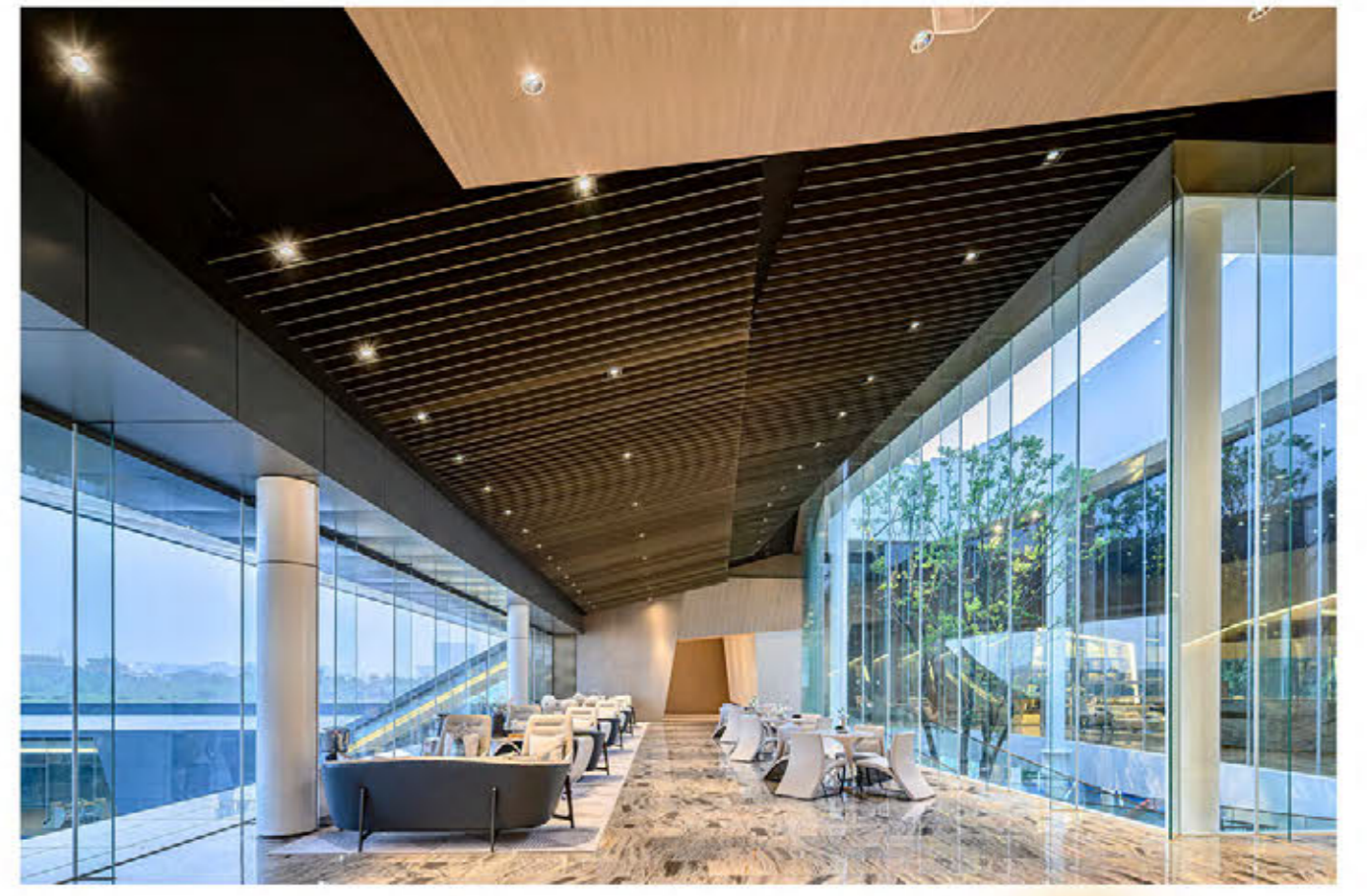


To the landscape of natural elements, the winter water as ice, the natural elements extended to the interior and mutual response to the sand table lamp with the shape of the curve combined into a large side like ice flow in the sky, imposing momentum, at the same time implies the sales office flow





The use of high-quality acrylic, using light and shadow and layering sense to create illusory visual effect line elements also cater to the whole space of hard outfit smooth space, leaving a deep impression on people





The central location of the recreation area is designed as an independent landscape. As a highlight, the central landscape is designed with a back-shaped slope that connects to the lower display area, reflecting the continuity of the space. The multi-functional display areas are interconnected, and the long and narrow spaces have an innate artistic atmosphere and display characteristics.

