



FLUID SPACE

FLUID SPACE

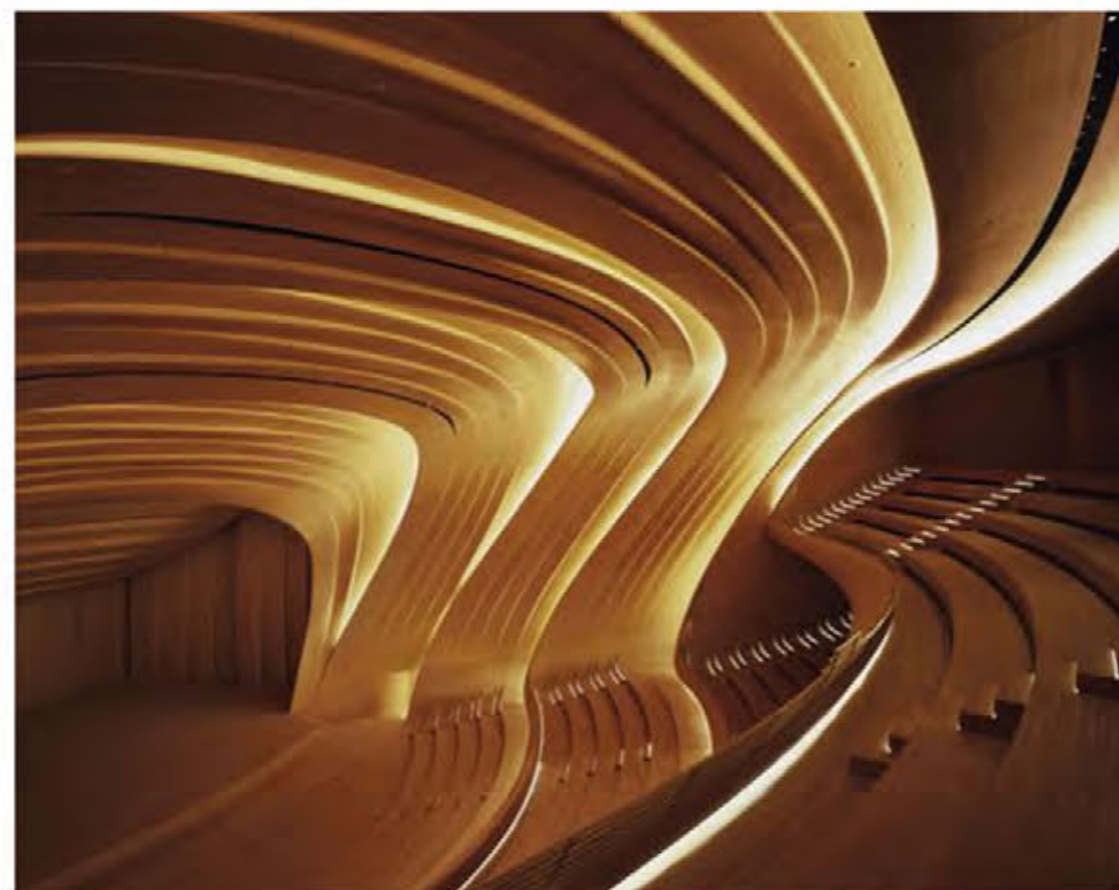
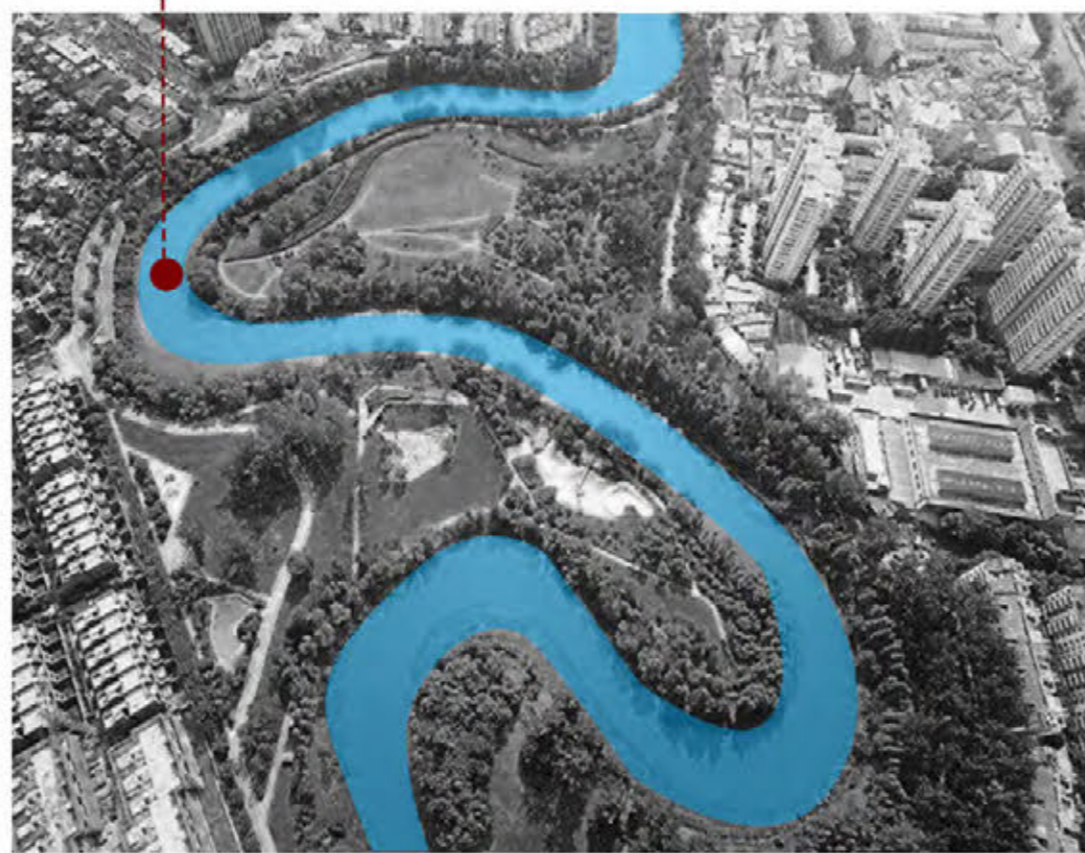
LOCATION



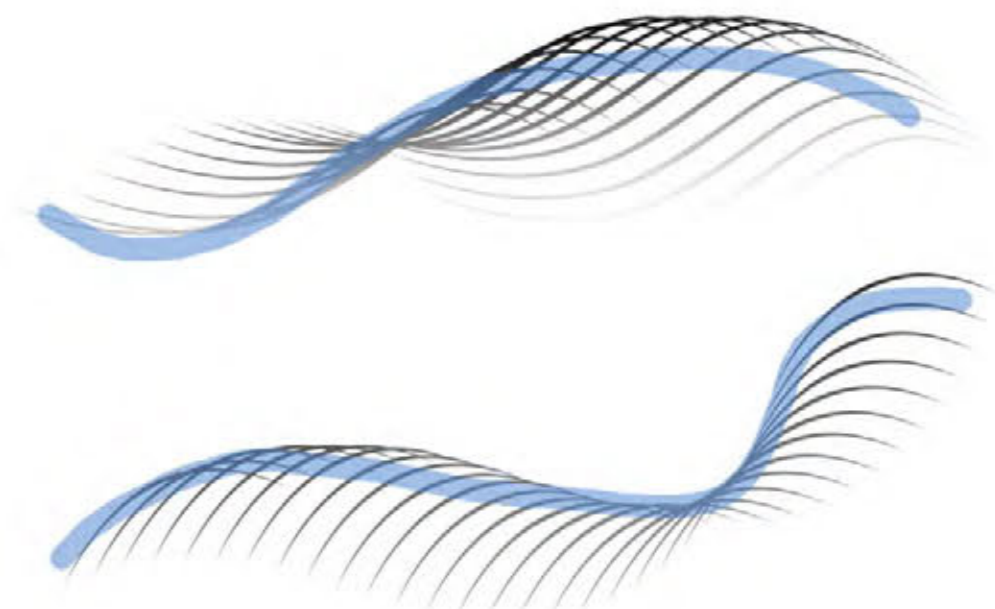
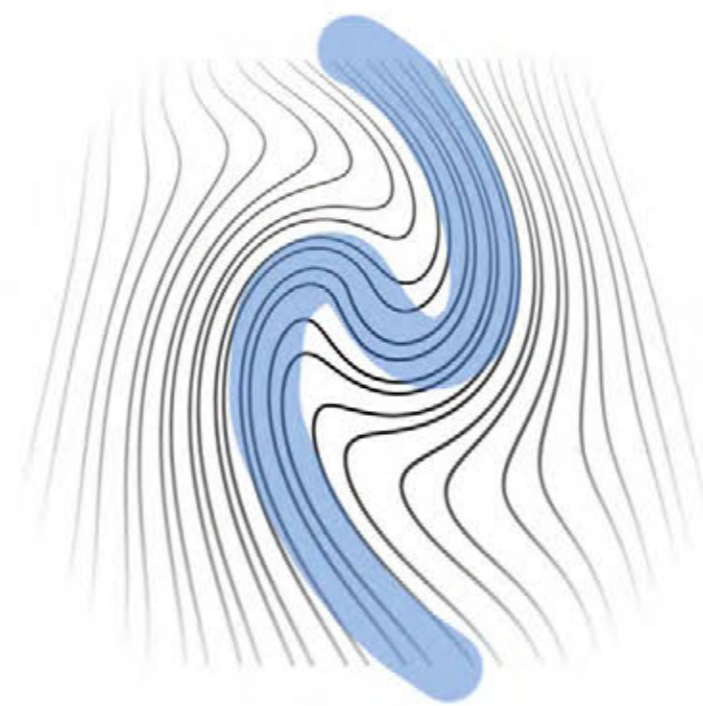
Hefei is the capital city of Anhui Province and an innovative capital with international influence. The project is located in the eastern part of the main urban area of Yaohai District, Hefei City, far from the noise of the city center. The northeast direction of the project is separated from the Yaohai Wetland Park.

The Feihe River

It has superior natural environment and ecosystem. A large area of green landscape belt is planned on both sides of the building to construct a quiet and fresh natural space environment. Inspired by the design of "Fei river form" of Hefei Mother River, the designer follows the concept of art design of Fei river curve and introduces the art elements of flowing space into the interior space.



The combination of fluid and space



FLUID SPACE



The art of using curves

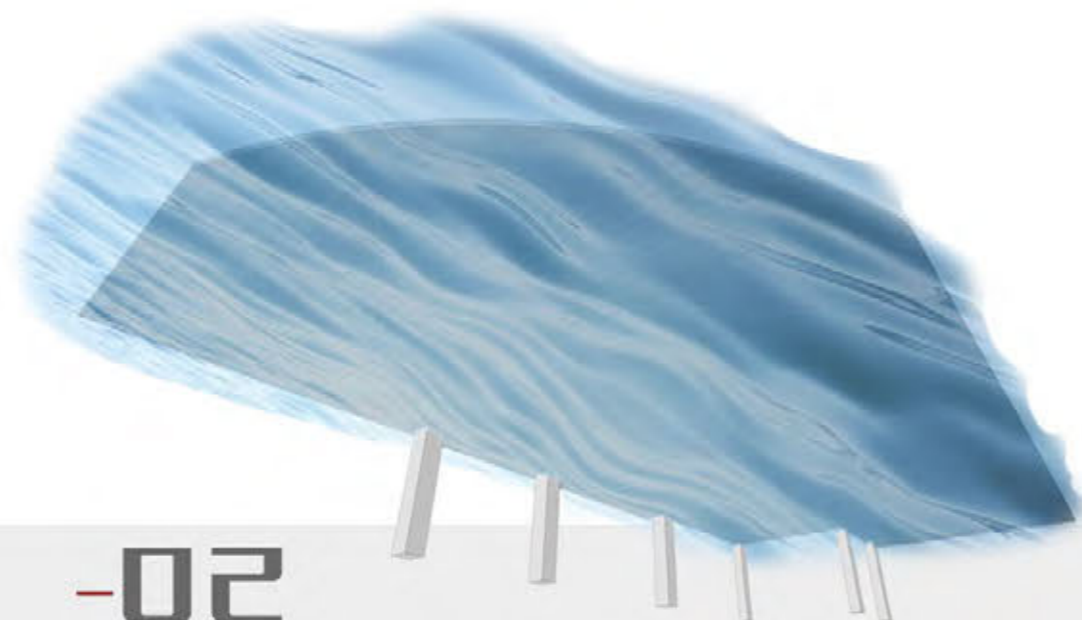
In the design of interior space, the designer combines soft and smooth lines to create a streamlined space with a strong sense of rhythm and beauty. It shows the super-modern atmosphere of space art. Interior space design deduces the quintessence of modern nature through concise and smooth form and language. The winding and flexible rotating staircase gives space a sense of future, just like a long and gentle ribbon, which visually presents a vast continuity, and the flowing aesthetic perception enhances the style of space.



CONCEPT



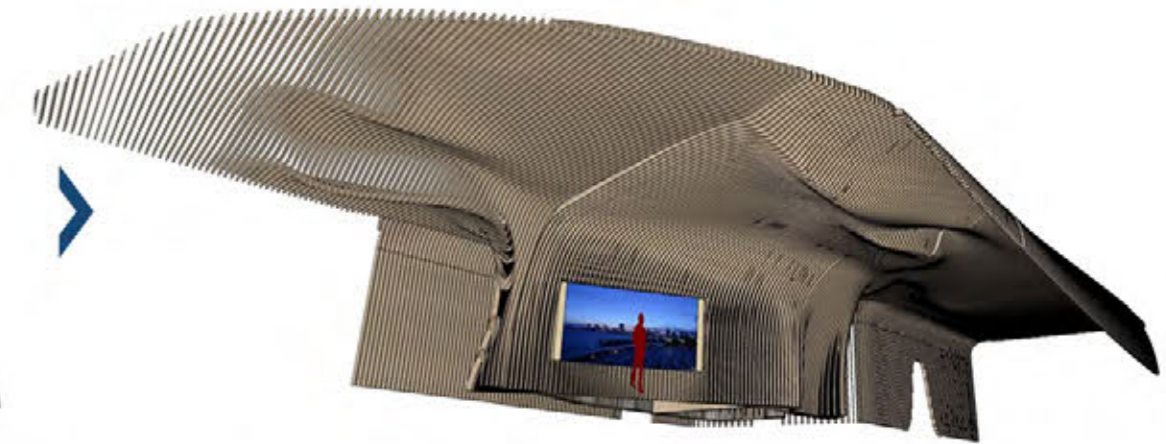
-01
structure



-02
RIVER

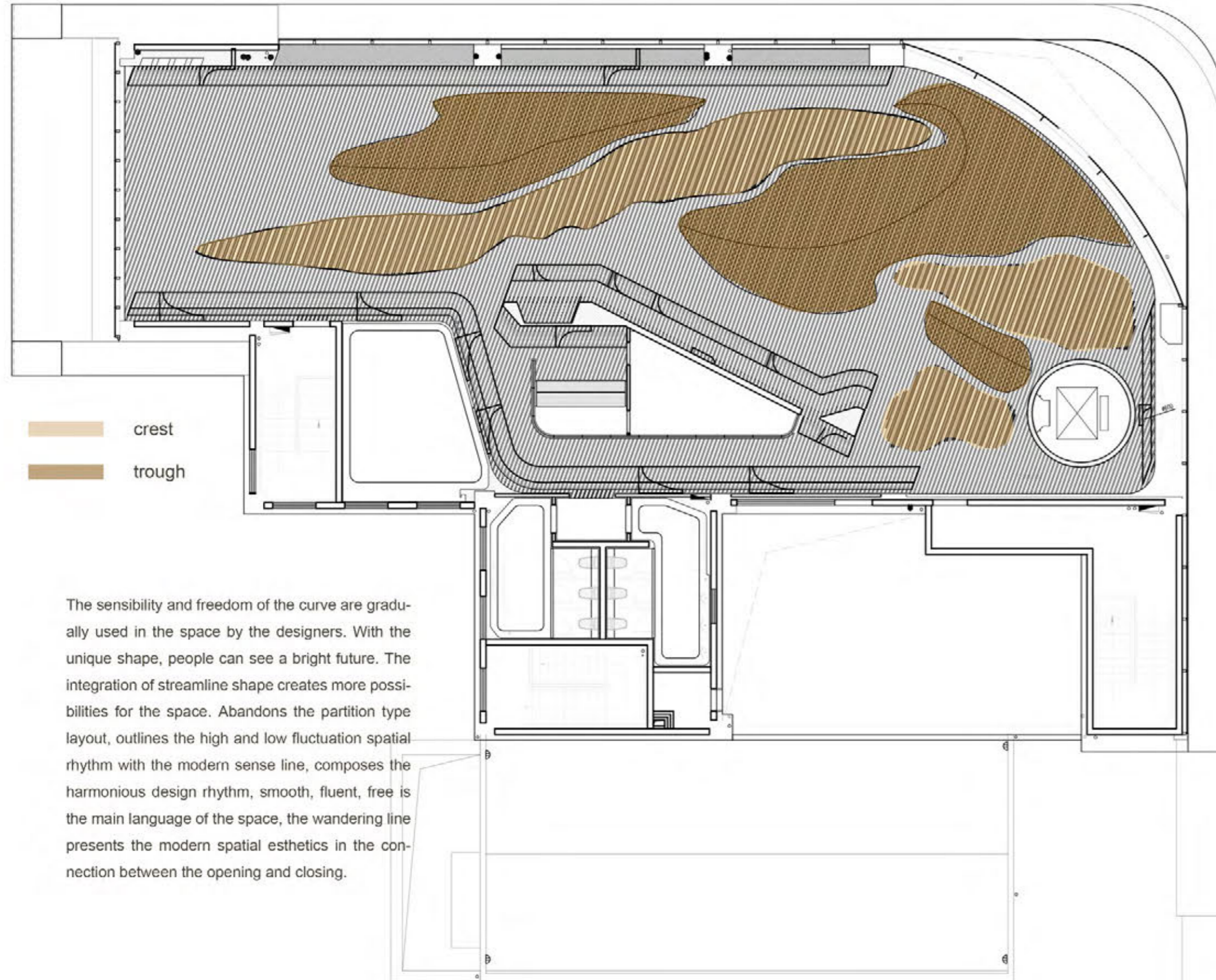


-03
fluid state

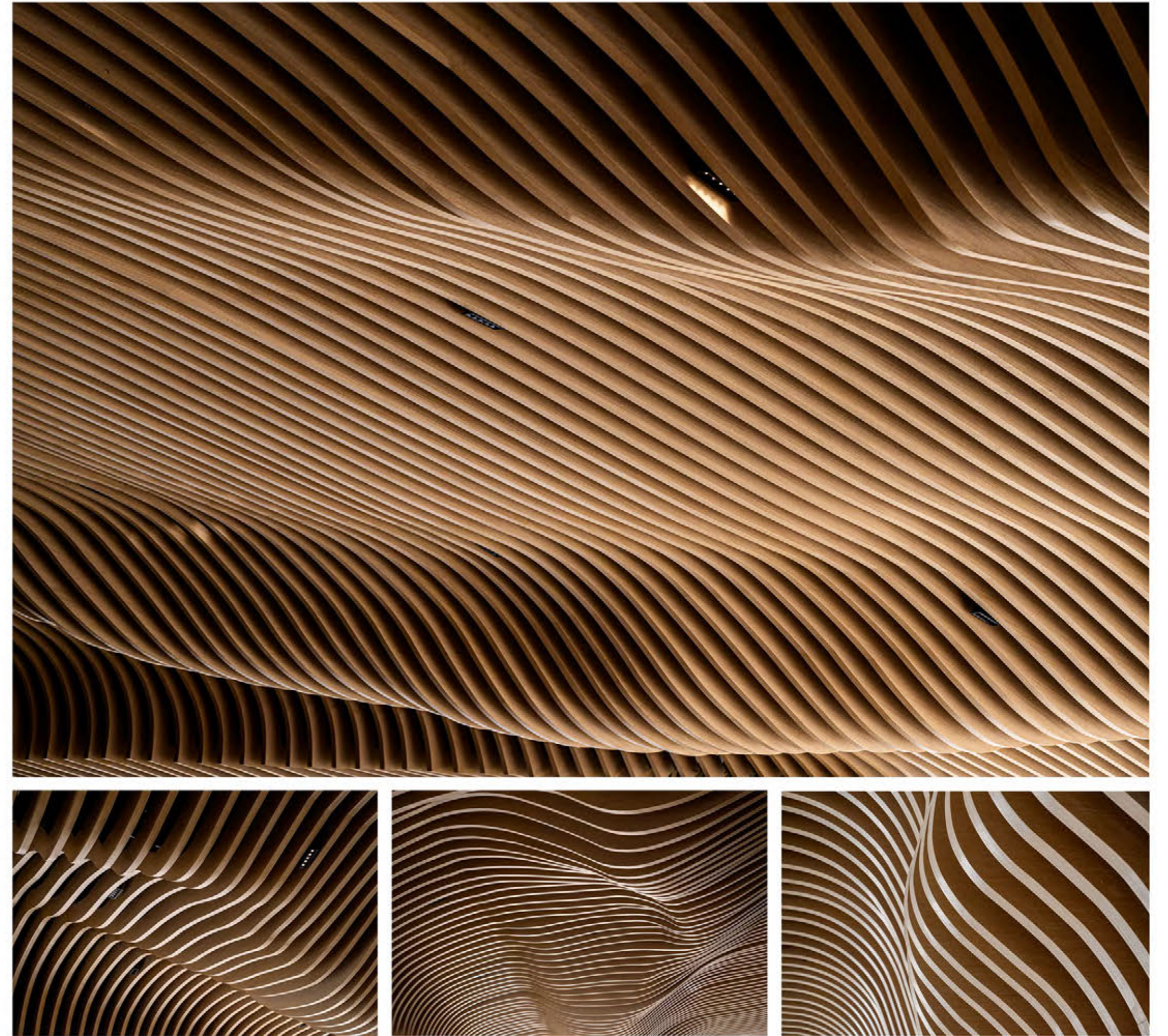


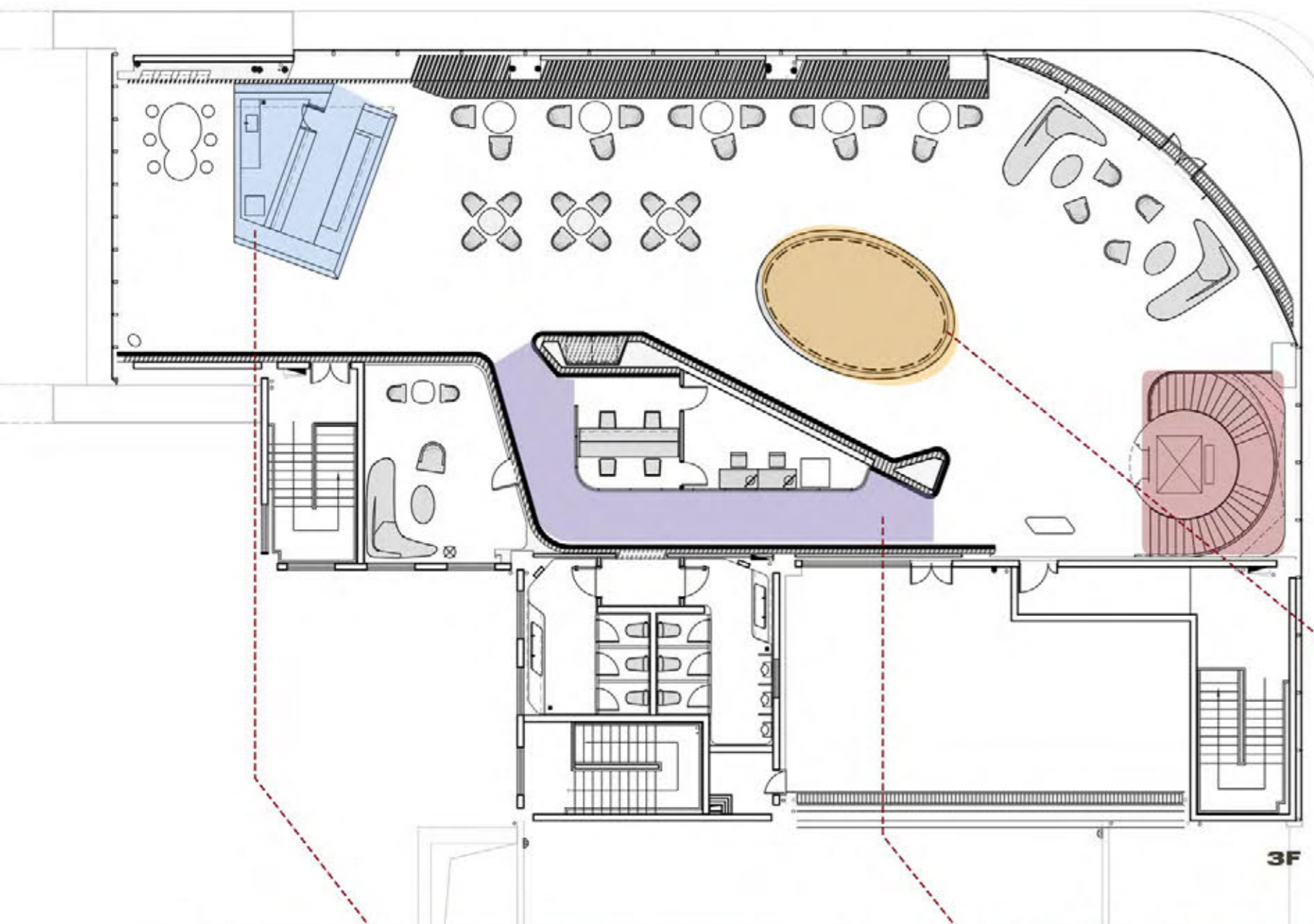
-04
complete

FUNCTIONAL FLOW

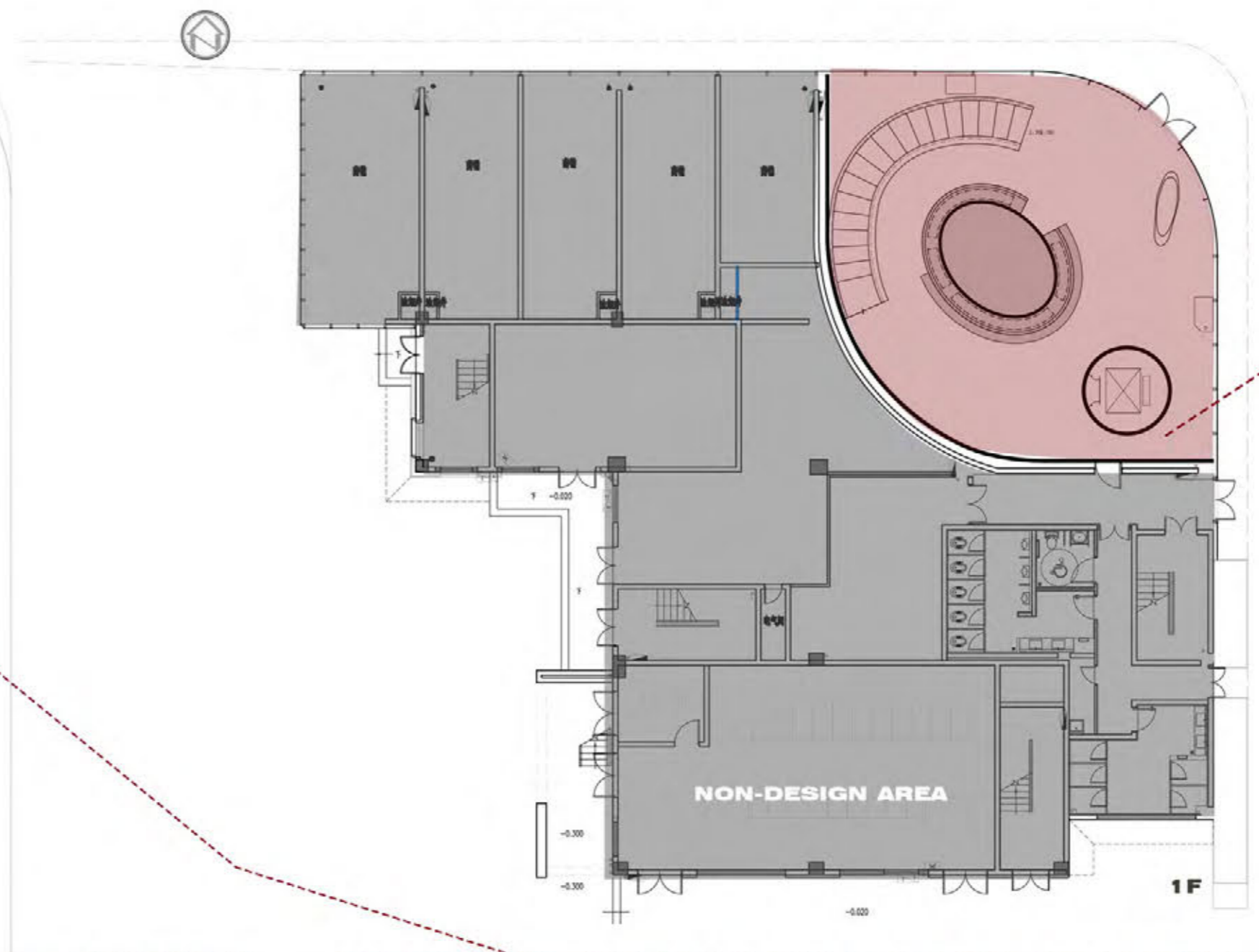


The sensibility and freedom of the curve are gradually used in the space by the designers. With the unique shape, people can see a bright future. The integration of streamline shape creates more possibilities for the space. Abandons the partition type layout, outlines the high and low fluctuation spatial rhythm with the modern sense line, composes the harmonious design rhythm, smooth, fluent, free is the main language of the space, the wandering line presents the modern spatial esthetics in the connection between the opening and closing.

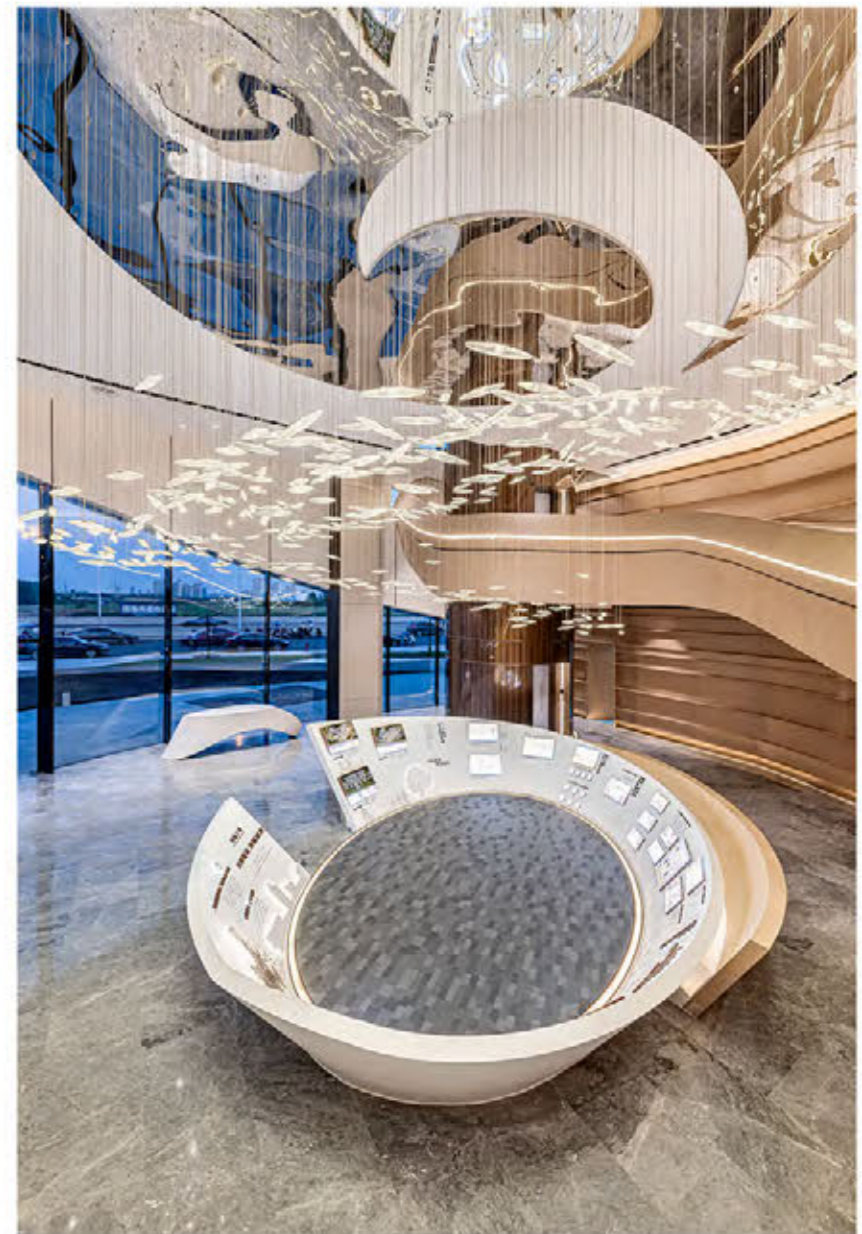




3F



1F



BAR COUNTER



TIME PASSAGE

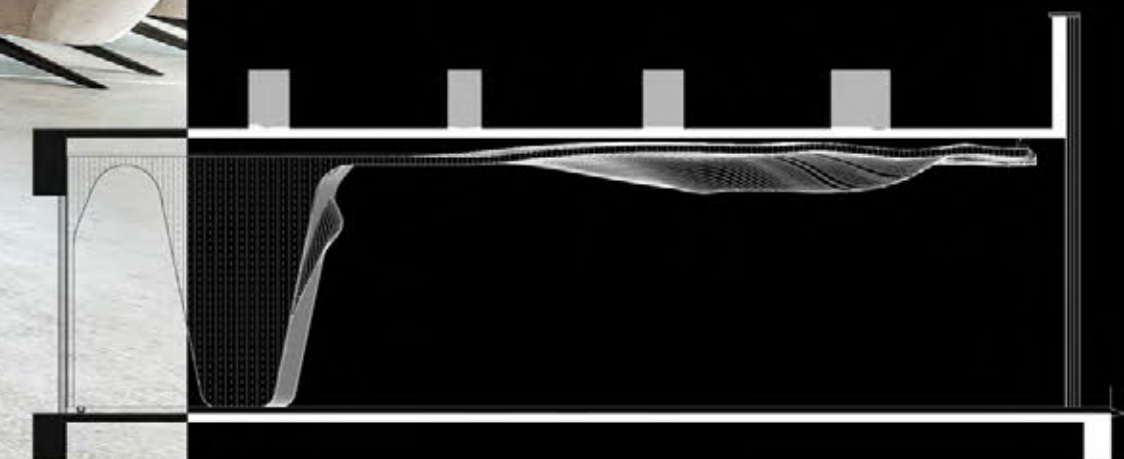
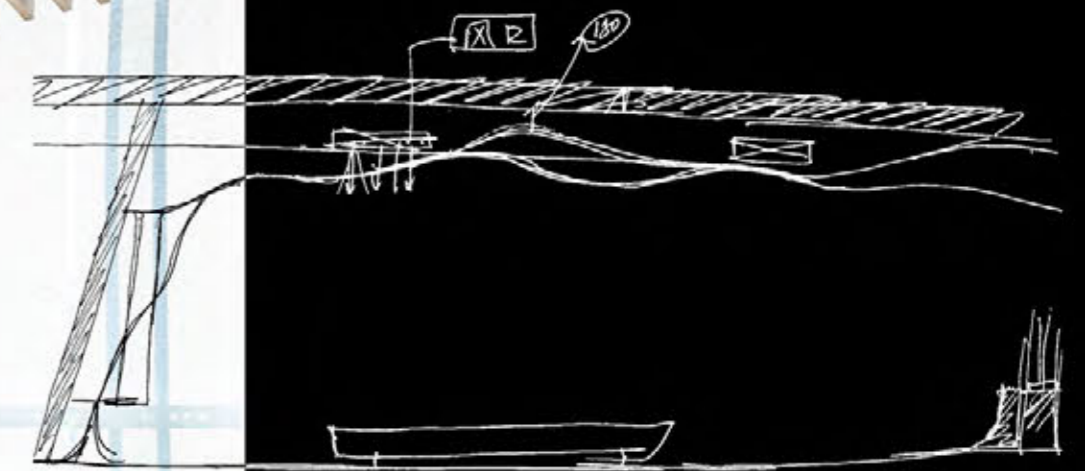


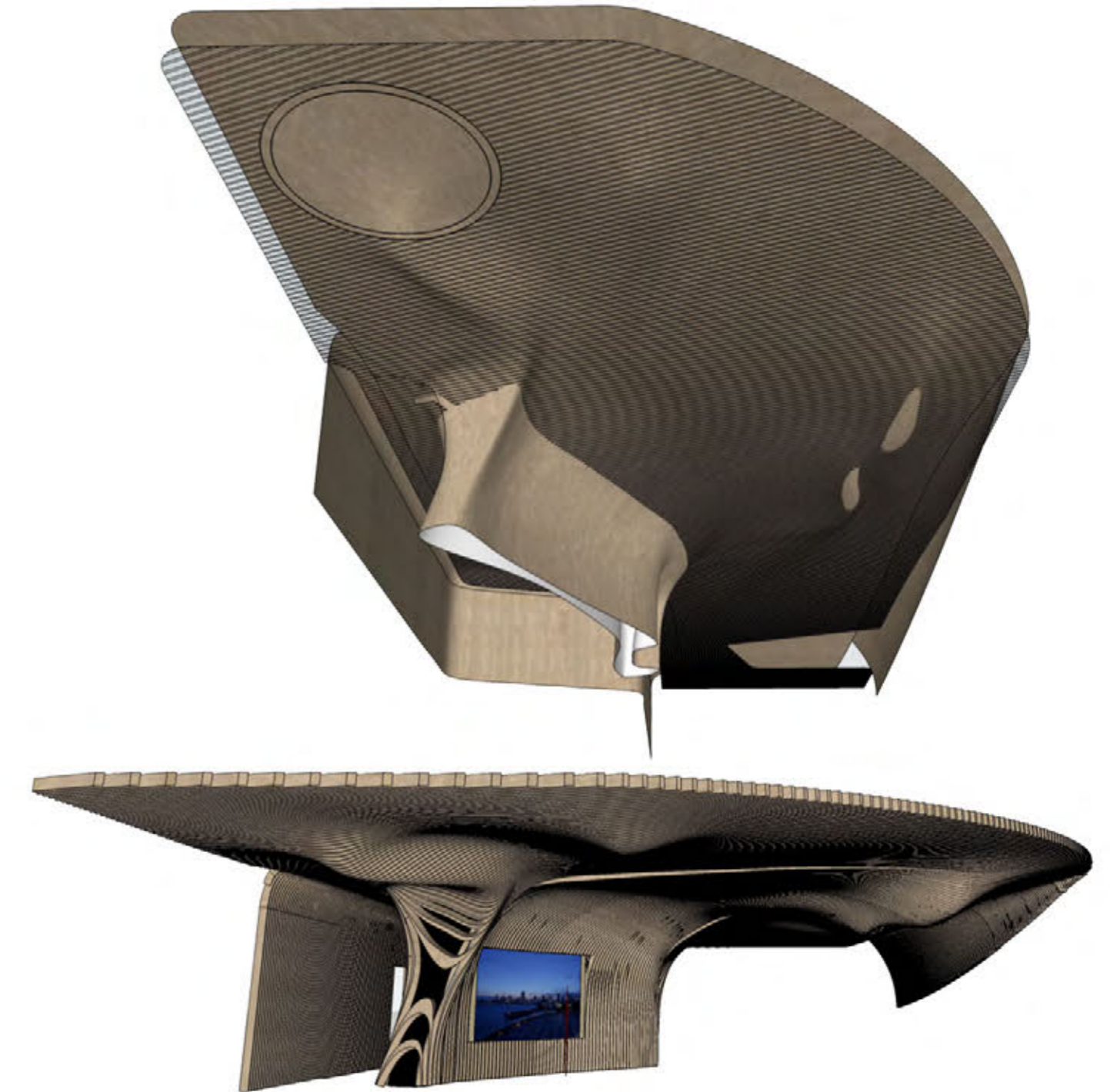
SAND TABLE

STAIRS

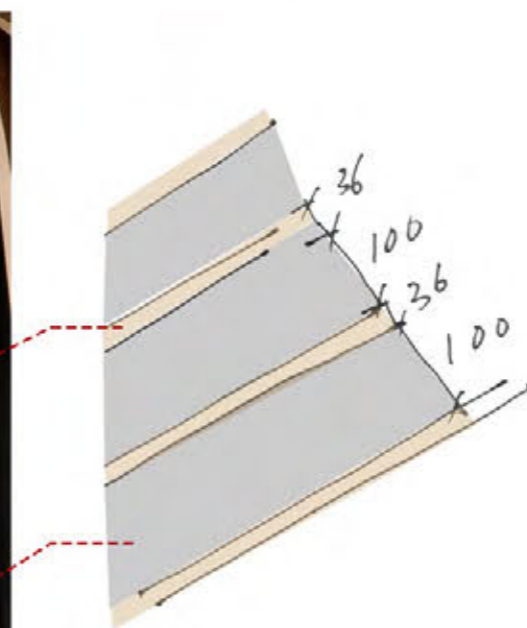
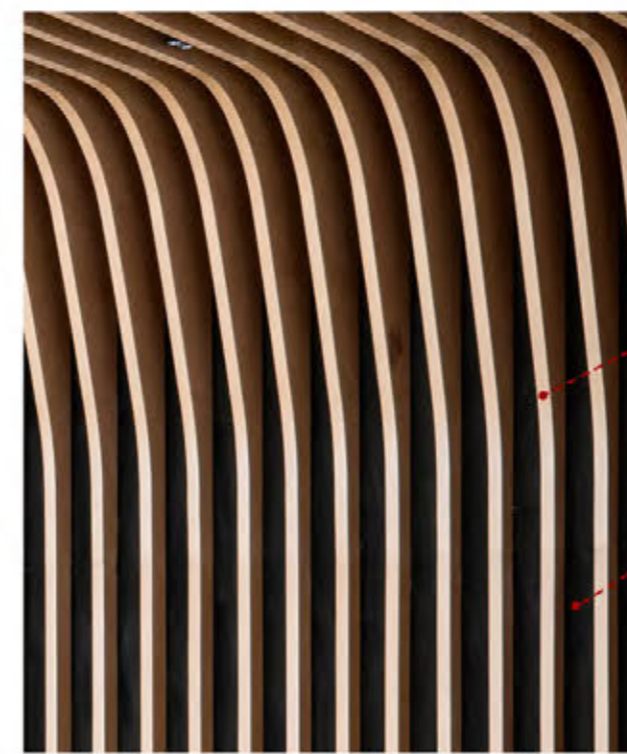
INTERIOR

The designer applies the feeling of waves and fluctuations in the water to the indoor space. The neat wooden waves at the top of the negotiation area are interwoven with the rhythmic visual aesthetic feeling in the clouds and running water. The vitality and appeal of the curve are embodied here. It is flexible, soft and changeable, making people feel relaxed, happy and elegant.

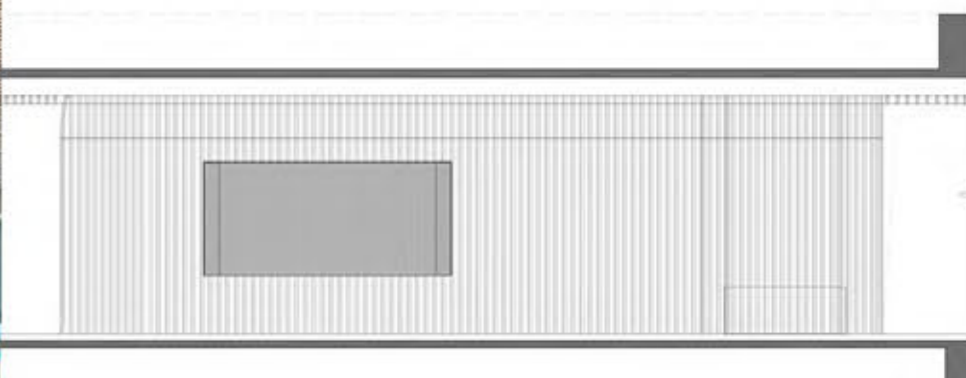
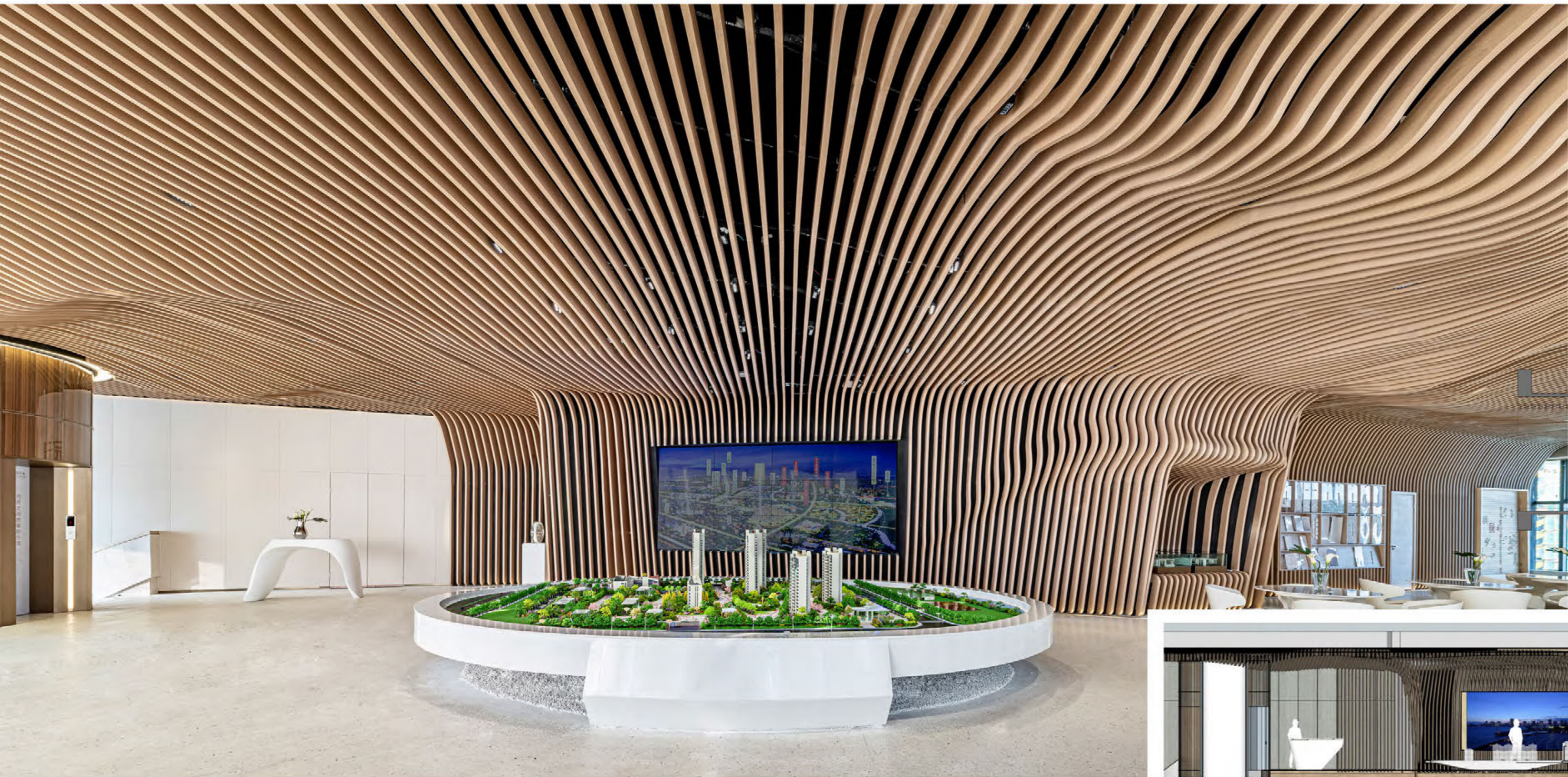


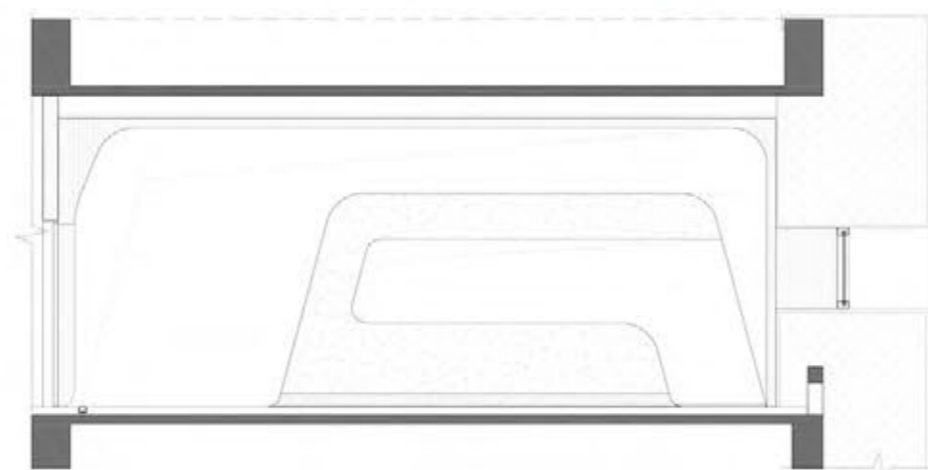
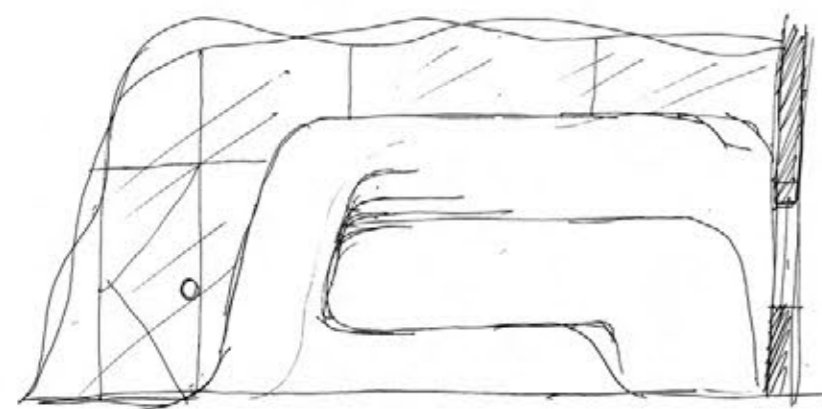


3D modelling is applied to realize the sense of space between people and the building and the effects of space planned base on the actual dimensions.

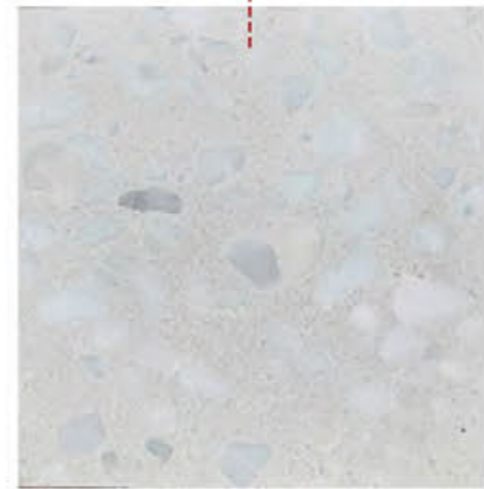
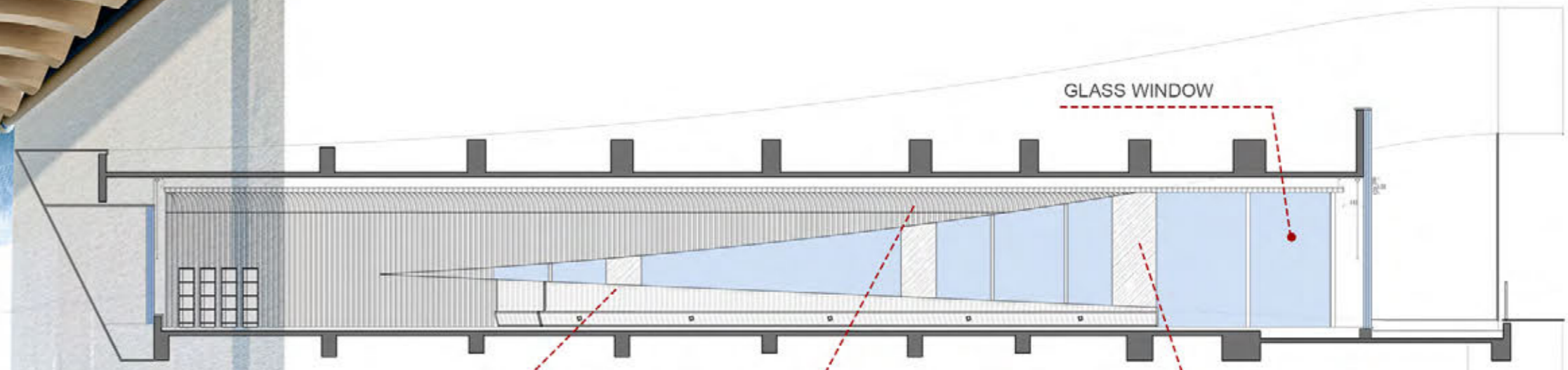


Designers use modern design techniques to create a dynamic and rich space artistic conception, which increases the interactivity between people and space. Every space can be seen everywhere in the atmosphere of contemporary art, with the help of sharp lines and stone, glass collocation, showing the aesthetic sense of interwoven lines of sight. With modern art as the theme, we use high-quality solid wood bright paint, leather and stone, exquisite metal to create elegant and noble quality. The bar area also follows the dynamic changes of the wooden ocean, full of delicate design aesthetics.





We hope to realize a curving paper and the curve in the corner is hard to be realized. Especially angles of 90 degree, is a big challenge in construction and installation. In the reception area, we hope to make a box with curving paper, so we use artificial stone to realize it and form a nice curving surface in the reception area.



TERRAZZO

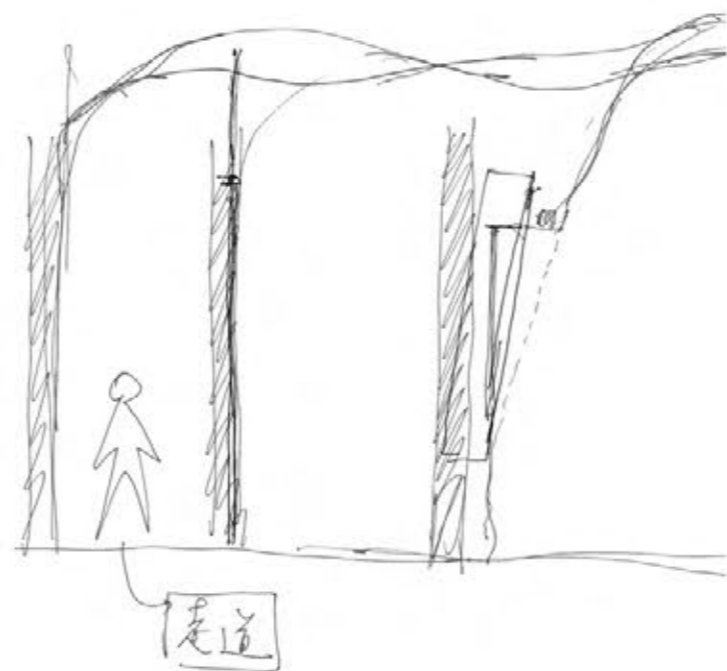


FLAT GRAIN

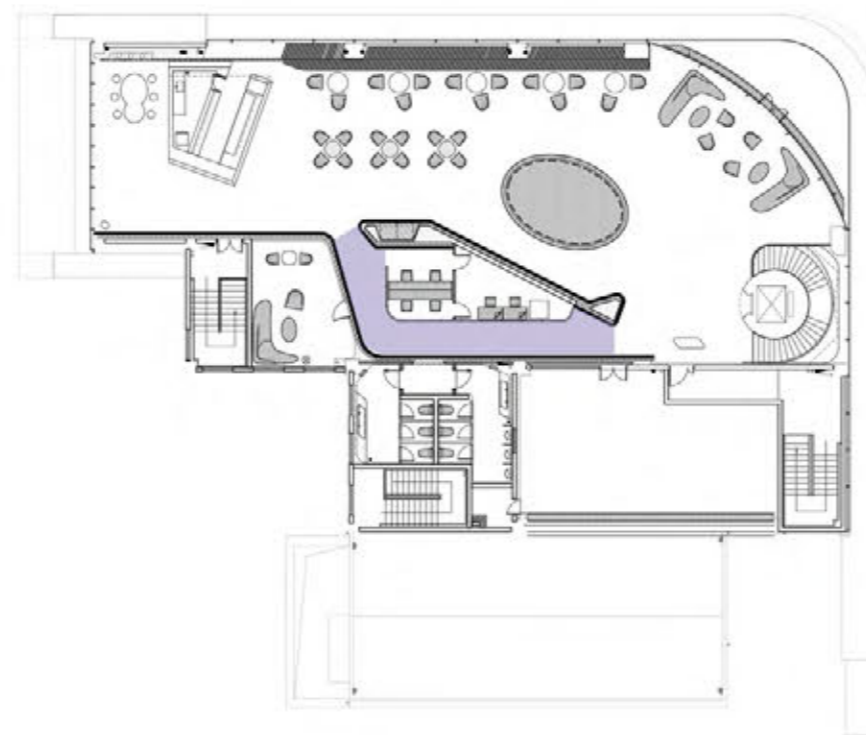


MIRROR SURFACE





In the design of interior space, the designer combines soft and smooth lines to create a streamlined space with a strong sense of rhythm and beauty. It shows the super-modern atmosphere of space art. Interior space design deduces the quintessence of modern nature through concise and smooth form and language. The winding and flexible rotating staircase gives space a sense of future, just like a long and gentle ribbon, which visually presents a vast continuity, and the flowing aesthetic perception enhances the style of space.





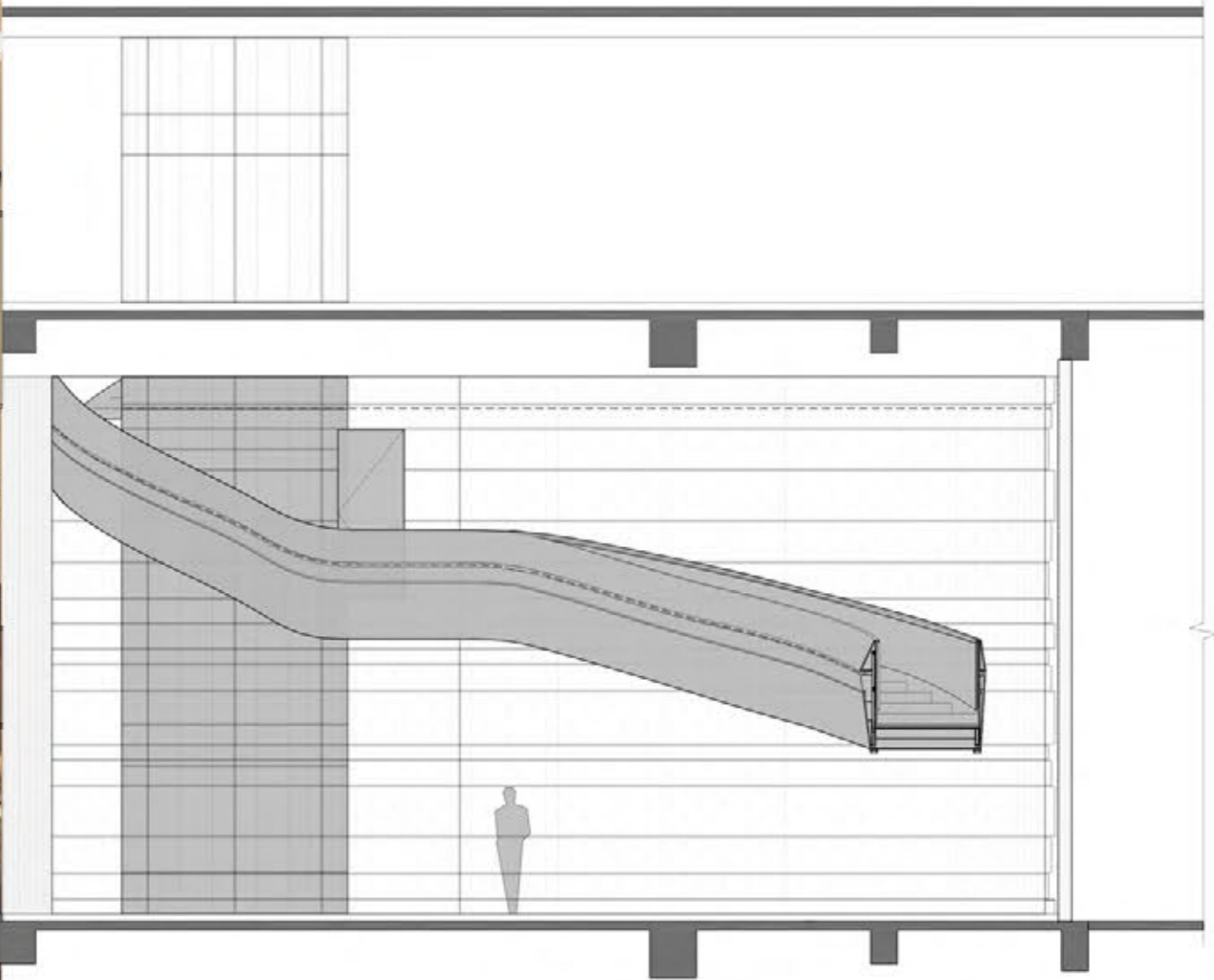
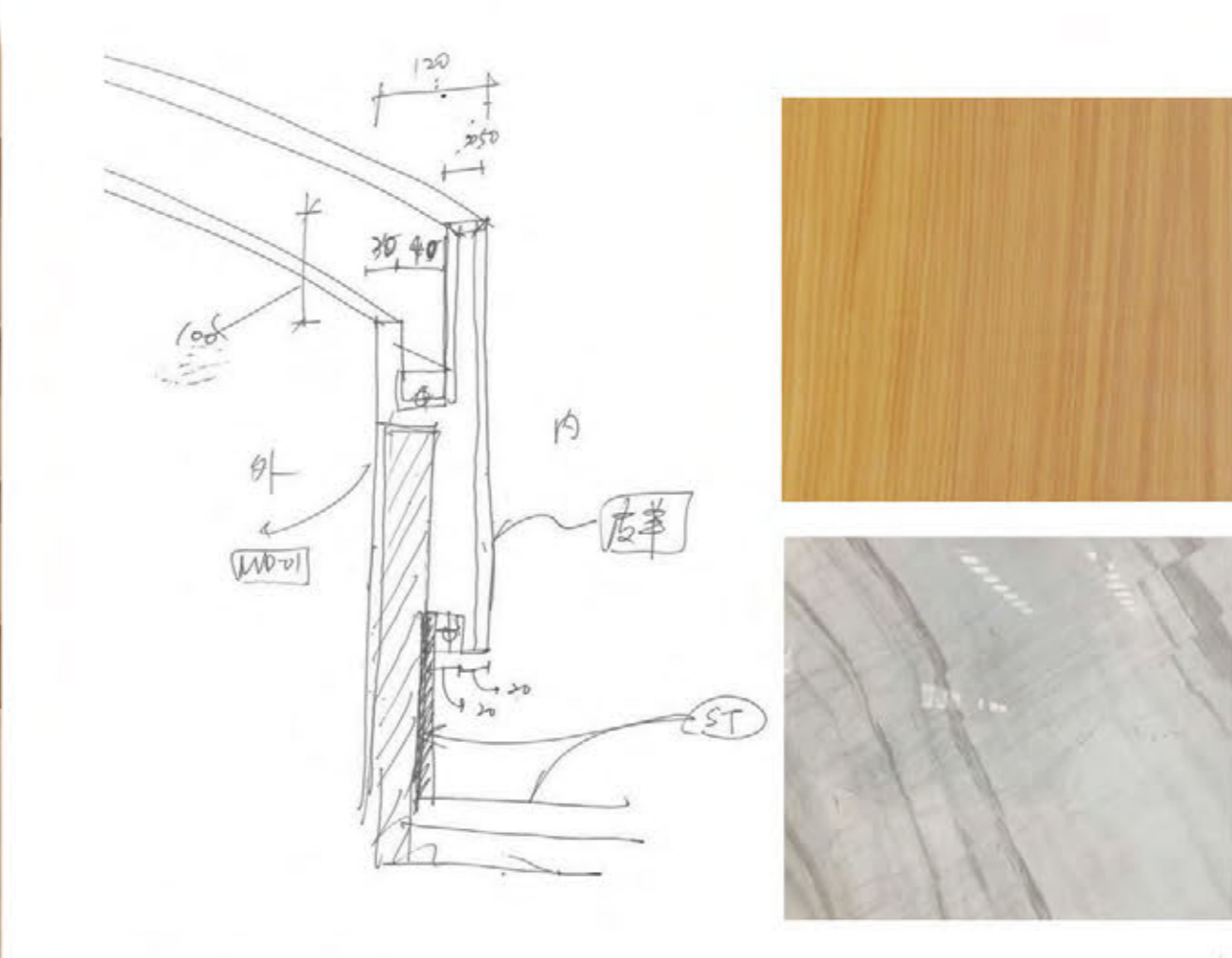


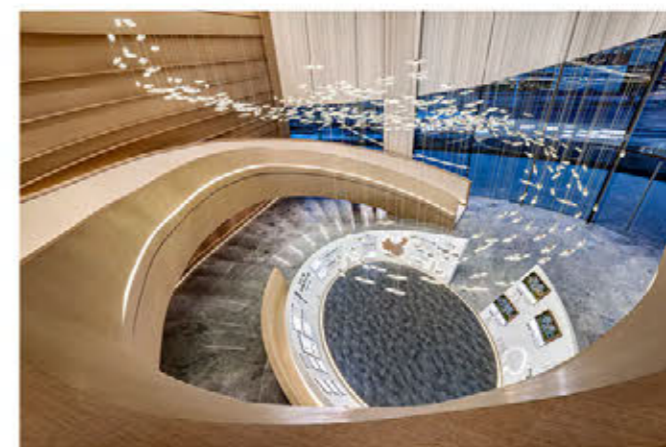
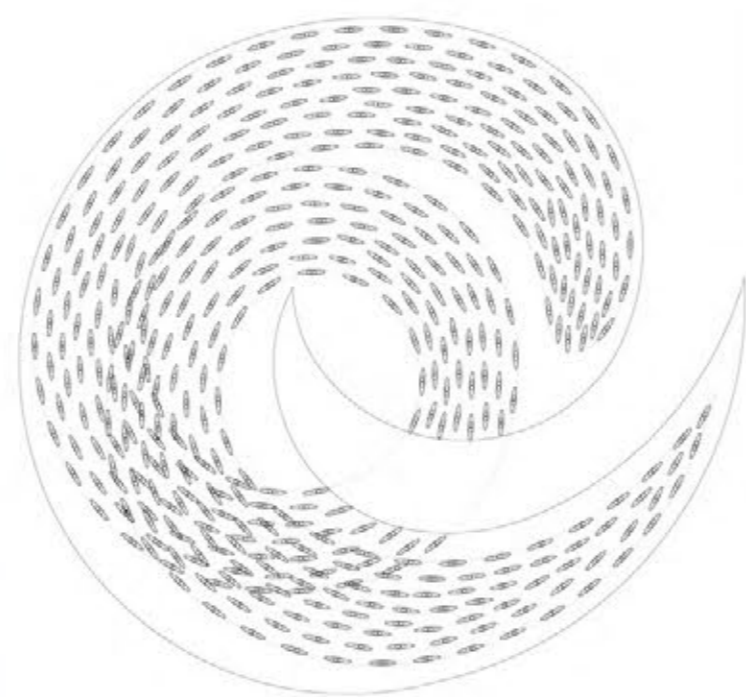
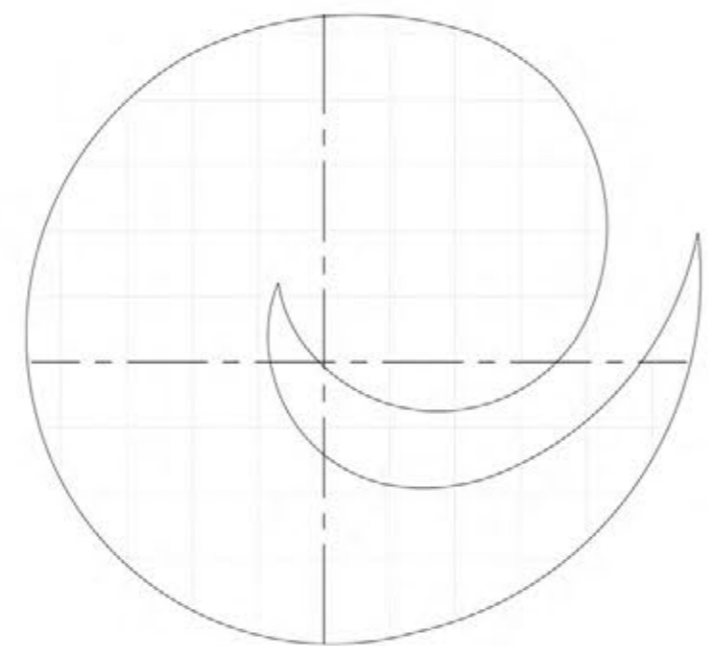
Public Space
Public Space
Public Space

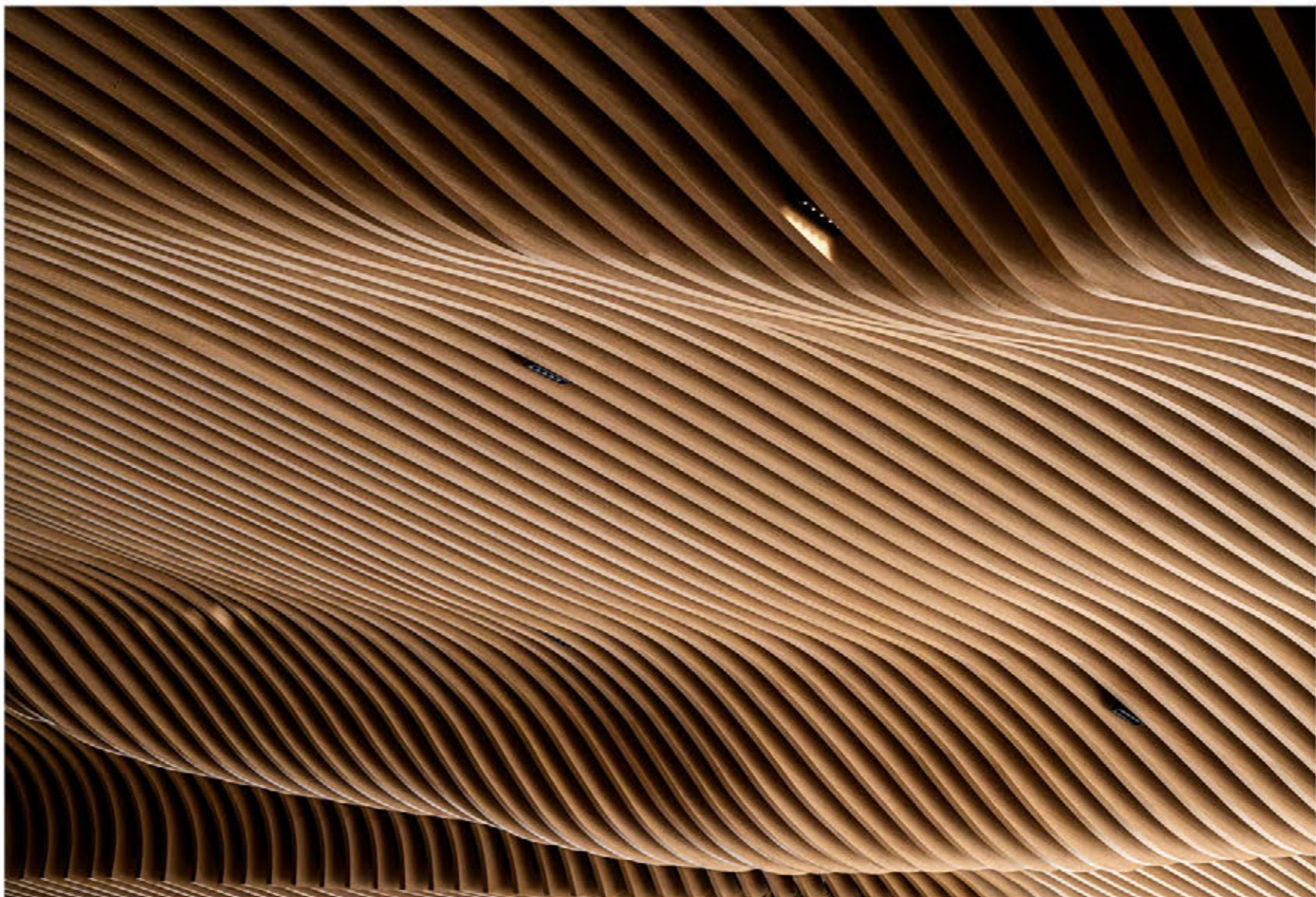
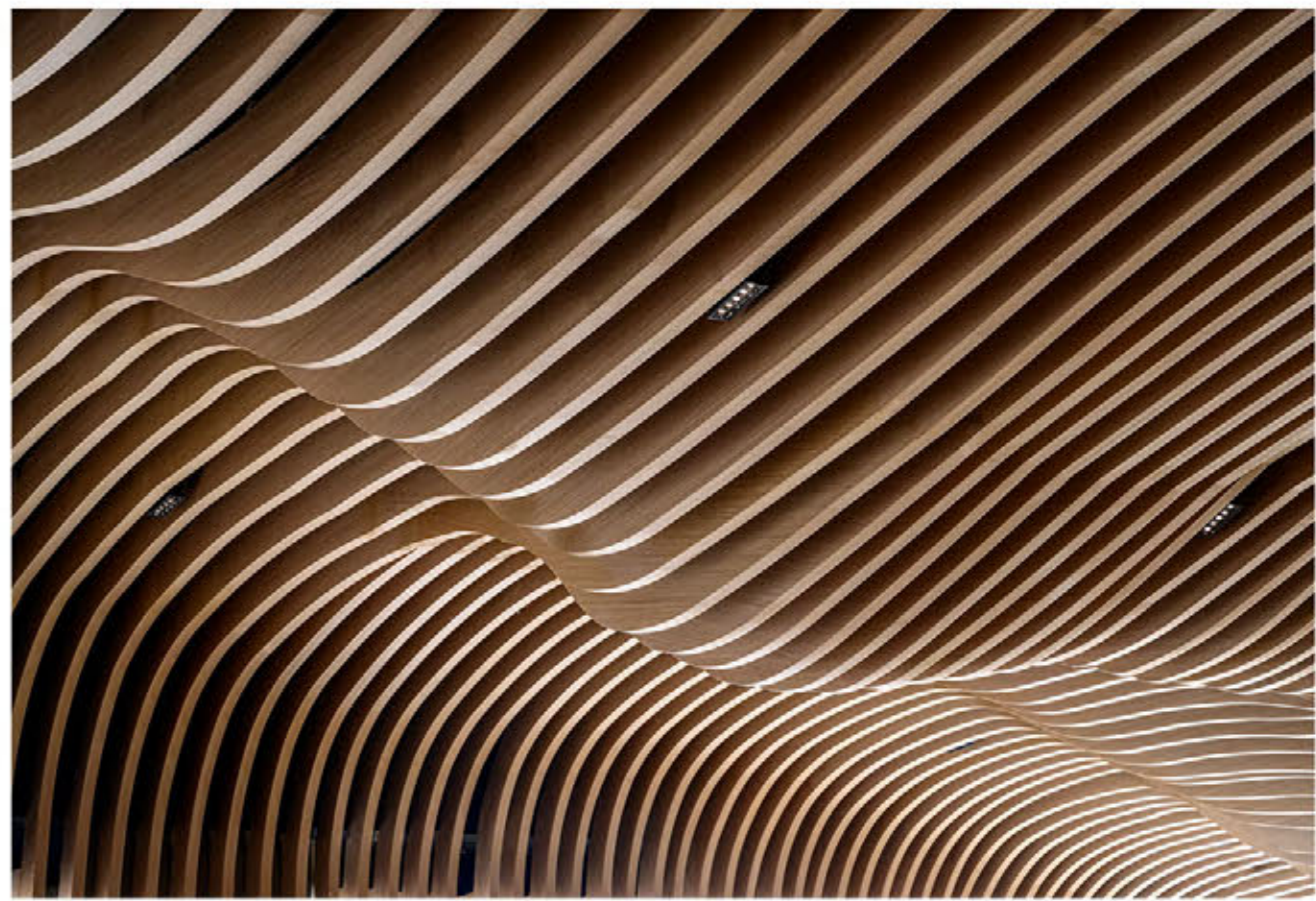
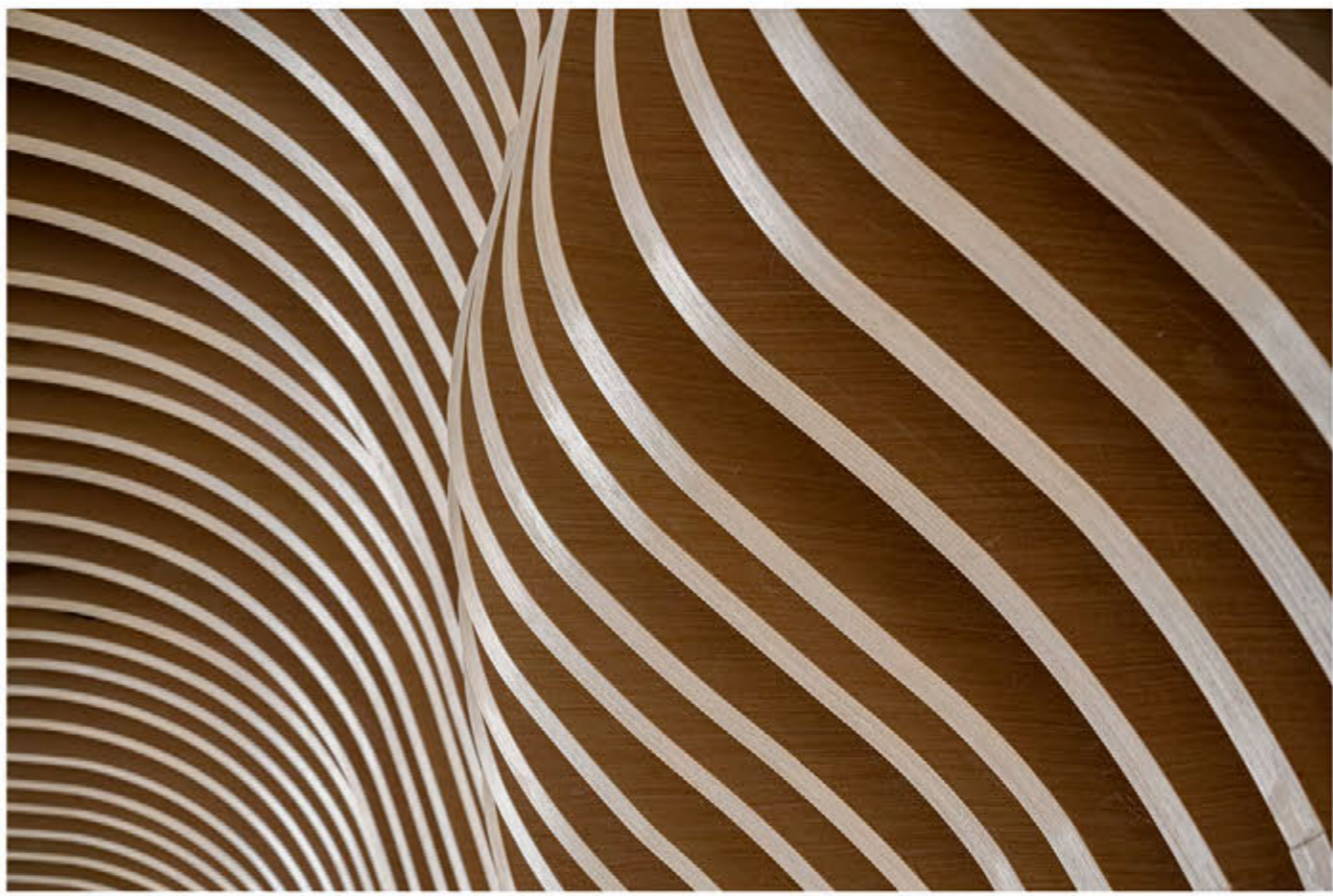
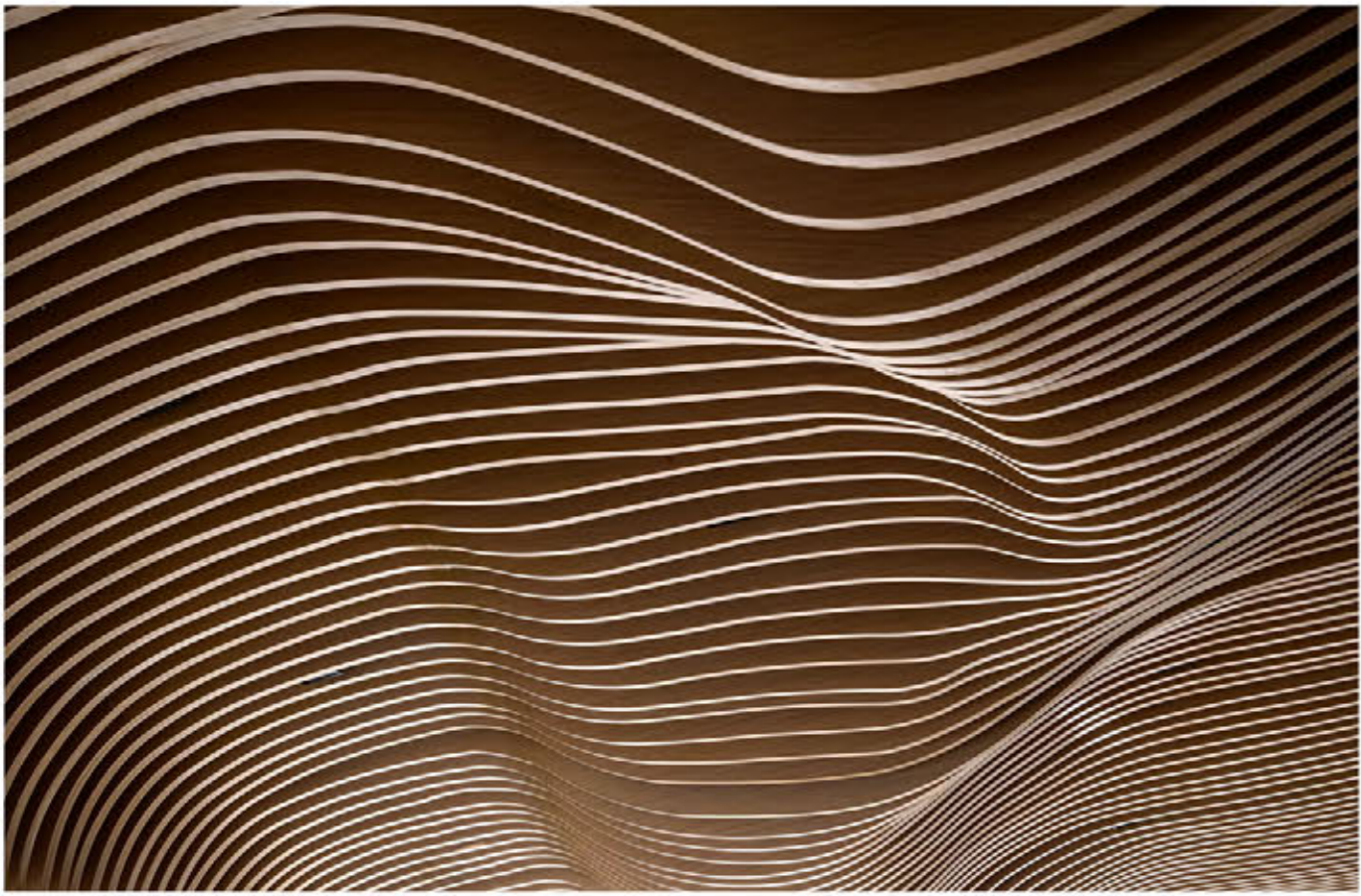
公共空间
公共空间
公共空间

公共空间
公共空间
公共空间

公共空间
公共空间
公共空间







FLUID SPACE



DECORATION



Sofa



Coffee table



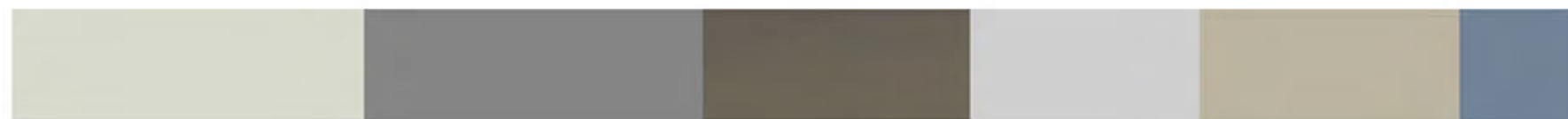
Vase



floor lamp



DECORATION



Chair



Tables

With modern art as the theme, the use of high-quality real wood varnish leather and stone exquisite metal to create elegant and noble quality furniture main decorative surface: varnish stone leather and other soft bag furniture fabric: sofa and pillow leather added blue department



Armchairs

