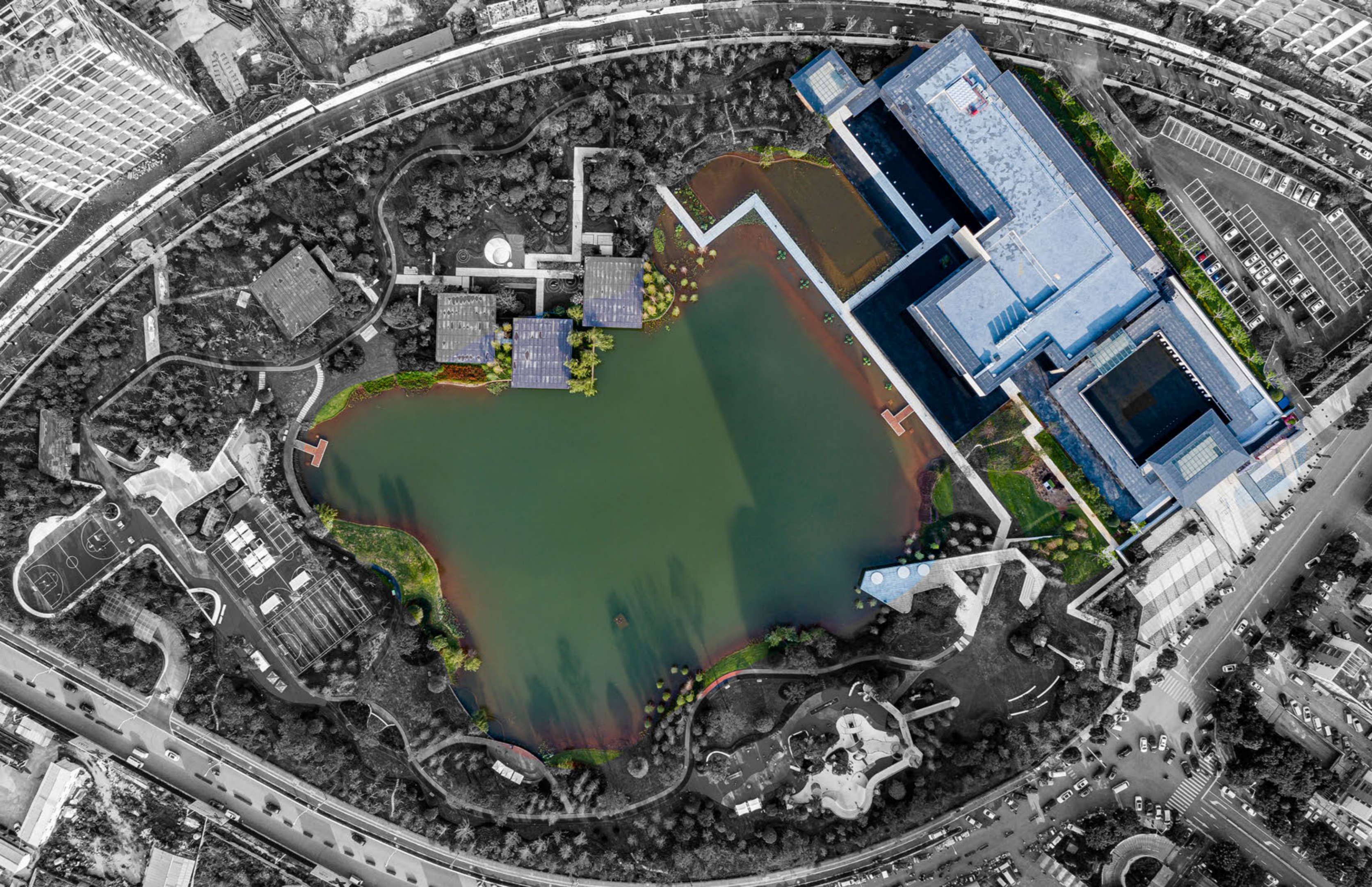




SNAIL BAY EXHIBITION CENTER



The project base is adjacent to Central Lake Park and has excellent natural landscape resources. Designers carried out a four-dimensional integrated design from architecture, landscape, interior to soft decoration.

This case is the reconstruction and reuse of old buildings in Luoshi Bay. The Luoshi Bay Center is a government-led urban renewal project that was upgraded on the original site of Old Luoshi Bay. The city exhibition hall is designed to show the future development of Luoyshi Bay area.

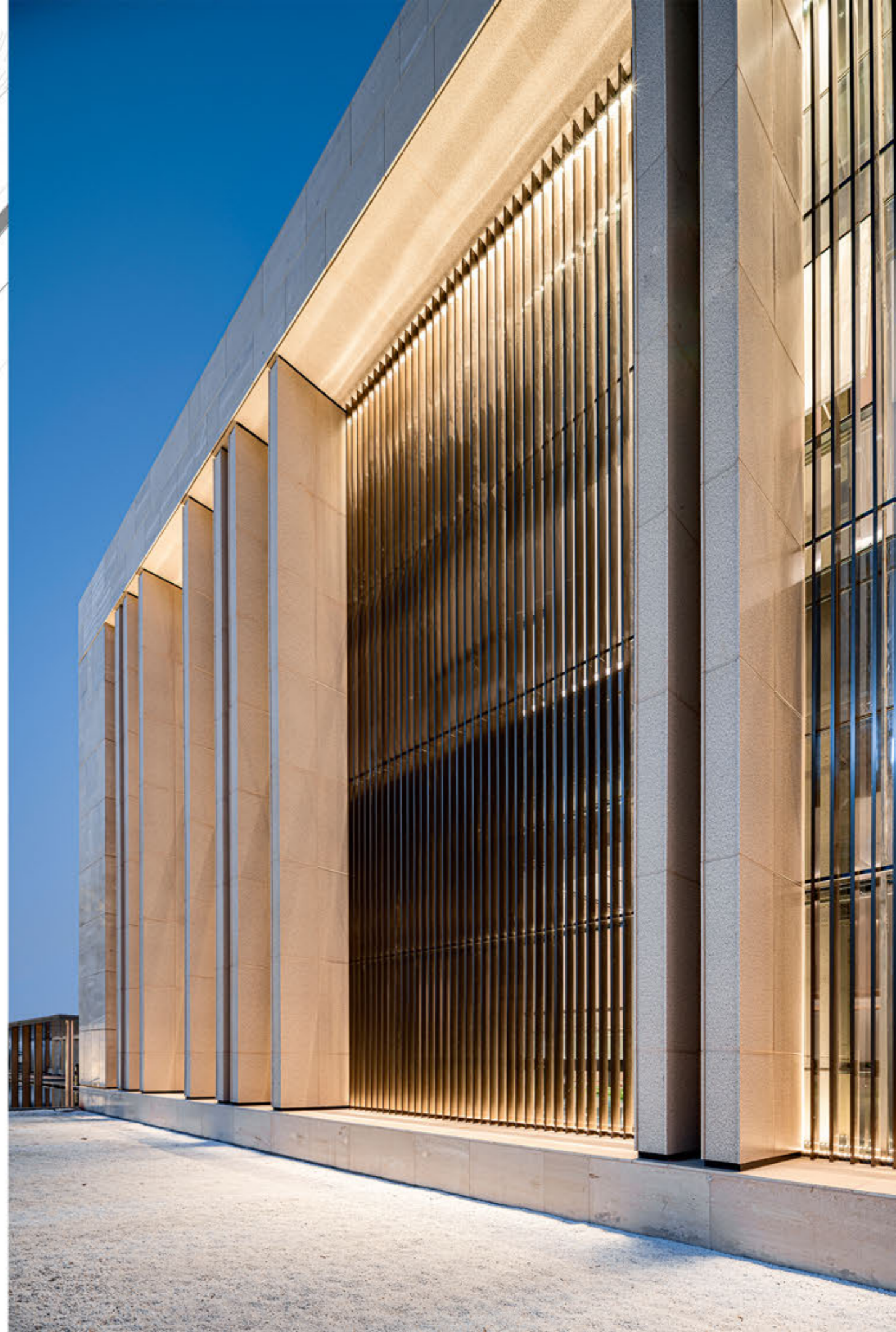
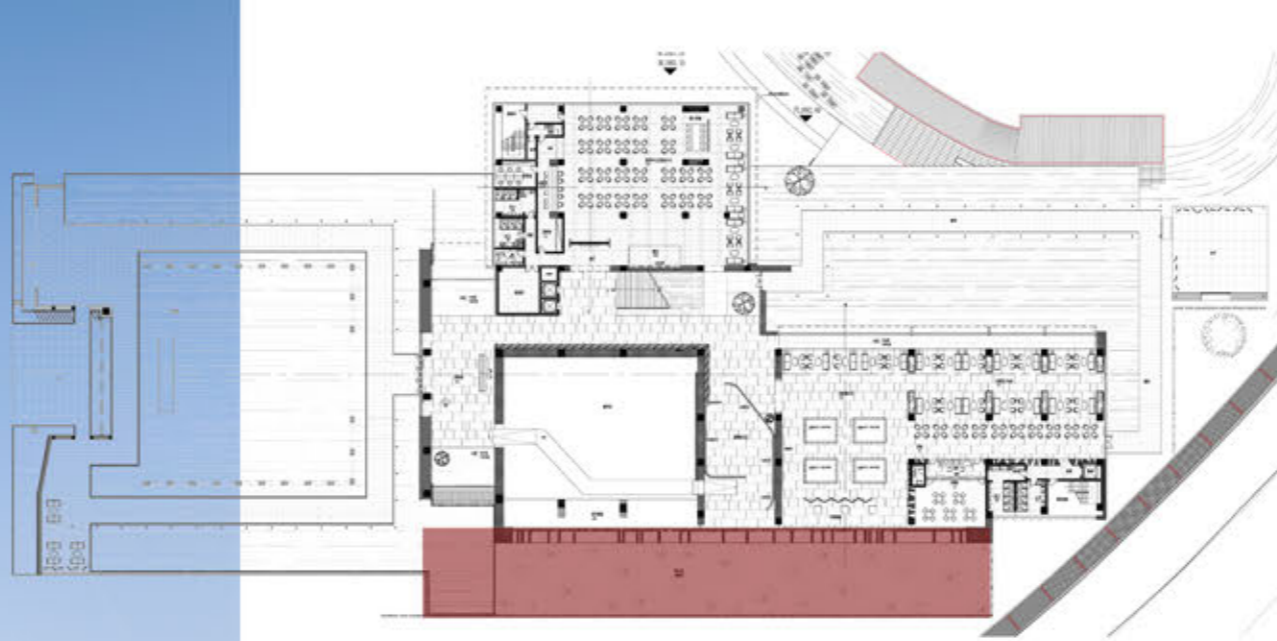


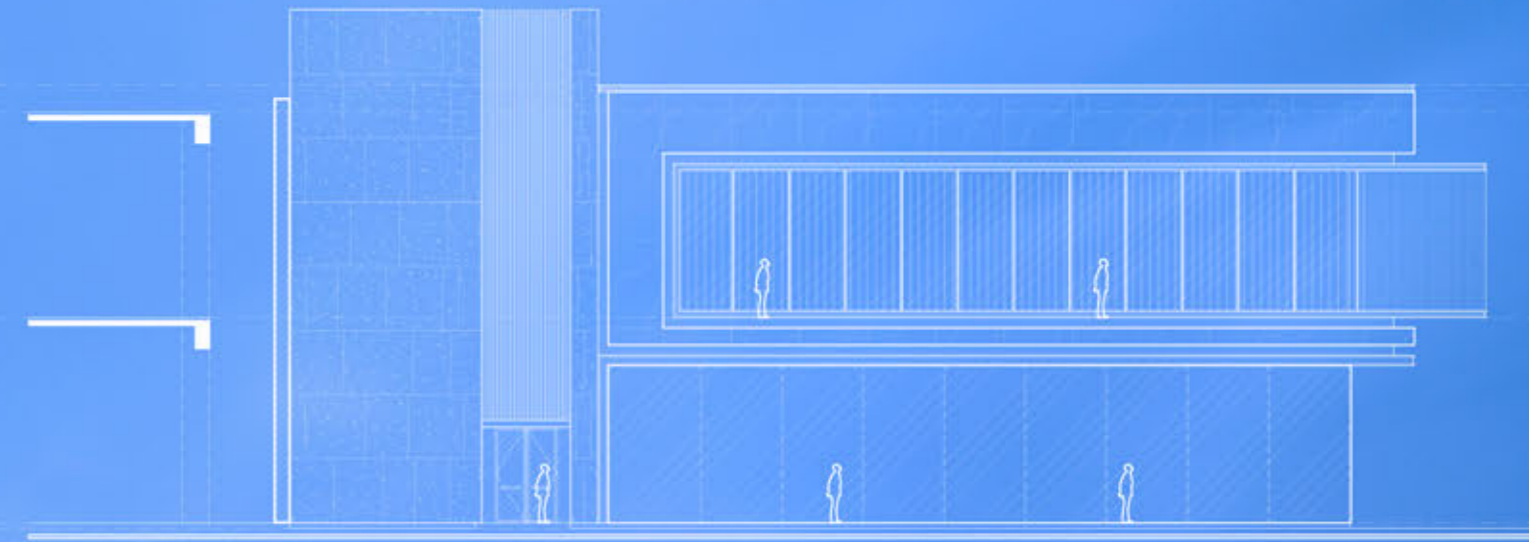


The change of light and shade gift indoor space for dynamic and static, shaping and affecting the whole space atmosphere.









The lake water is introduced into the building, and the regular pool and the natural lake surface form the visual effect of overlapping. The corridor connects the indoor and outdoor space, and at the same time breaks the monotonous water surface space, which enriches the landscape level of the pool. The openness and naturalness of the space create a flow between indoor and outdoor.

