

樂旺
THE ONE

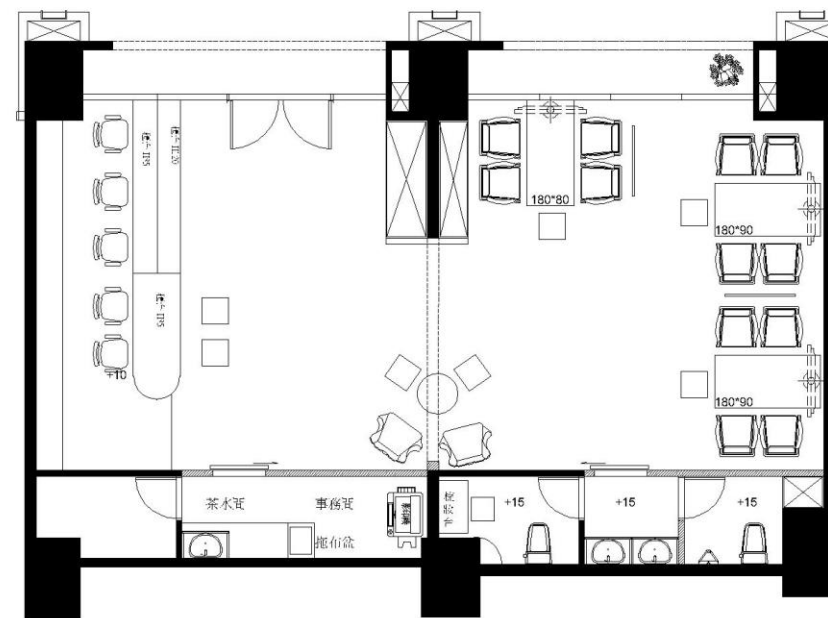
華人
金創獎
TAIWAN
LOUDESIGN
AWARD



設計概念 Design Concept

為打破傳統的銷售中心之設計手法，摒除繁雜的造形面以及裝飾材，單純以柯比意的三原色做變化並營造出整體空間色彩的律動。本空間為二戶打通的商業用空間，因此建材採用對環境污染最小的木材、布類以及可回收的金屬，以期在銷售完成後可以最低的垃圾量復原空間或是延續成為商業用途之空間。

In order to break the traditional design techniques of the sales center, get rid of complicated shapes and decorative materials, and simply change the three primary colors of Le Corbusier and create the rhythm of the overall spatial color. This space is a commercial space opened by two households. Therefore, wood, cloth, and recyclable metals that have the least environmental pollution are used as building materials, in order to restore the space with the lowest amount of garbage after the sale is completed or continue to be a space for commercial use.



接待櫃台 The reception counter

櫃台外側採用絨布繃布，以半圓型的造型與背櫃的線條以及櫃台台面的半圓型呼應。櫃台台面採用淺灰色素面人造石，在燈光的洗禮下，會呈現出金屬光澤。背櫃以律動的金屬條型框做為色彩的點綴。中段以金屬美耐板來呈現質感，並以造型吊燈來增加櫃台區的層次感且呼應櫃台的弧形造型。

Flannel stretch cloth is used on the outside of the counter, and the semicircular shape echoes the lines of the back cabinet and the semicircular shape of the countertop. The countertop is made of light gray plain artificial stone, which will show a metallic luster under the baptism of light. The back cabinet is decorated with rhythmic metal strip frames. In the middle section, the texture is presented by the metal beauty board, and the chandelier is used to increase the layering of the counter area and echo the curved shape of the counter.



THE ONE 樂旺

接待區 The reception area

牆面打通處做出一個簡單的方型框並以黃色跳出紫紅色的牆面，用以區分出接待區及銷售區。地面鋪材採用棋盤式的配置，彷彿進入了愛麗絲的午茶聚會。

A simple square frame is made at the opening of the wall and jumps out of the purple-red wall in yellow to distinguish the reception area and the sales area. The floor plank adopts a checkerboard configuration, as if entering Alice's afternoon tea party.



THE ONE 樂旺

銷售區 The sales area

每組銷售桌以金屬屏風區隔，各自獨立卻又說著相同的語彙。

Each group of sales desks are separated by metal screens, each independent but speaking the same vocabulary.



THE ONE 樂旺

銷售區 The sales area

對稱的弧形立燈，如同一朵盛開的花朵
沈浸在一片藍色的海洋之中。

The symmetrical arc-shaped standing lamp
is like a blooming flower immersed in a blue
ocean.



THE ONE 樂旺

銷售區 The sales area

圓弧造型並以絨布繃布的金屬屏風，可以預防小朋友撞傷。

The arc-shaped metal screen with flannel stretched cloth can prevent children from being injured.



THE ONE 樂旺

銷售區 The sales area

弧形、線條、絨布、金屬、色彩為
我們共同的語言。

Arcs, lines, flannel, metal, and colors are
our common language.



THE ONE 樂旺

銷售區 The sales area

紅色的熱情、藍色的穩重以及黃色的歡笑，是給來訪者的最大歡迎禮。

Red enthusiasm, blue stability and yellow laughter are the greatest welcome gifts for visitors.



THE ONE 樂旺

銷售區 The sales area

等待與愛麗絲、三月兔以及瘋帽客一起喝杯下午茶。

Waiting to have afternoon tea with Alice, March Rabbit and the Mad Hatter.



樂旺
THE ONE

華人
金創獎
TAIWAN
LOUDDISIGN
AWARD

