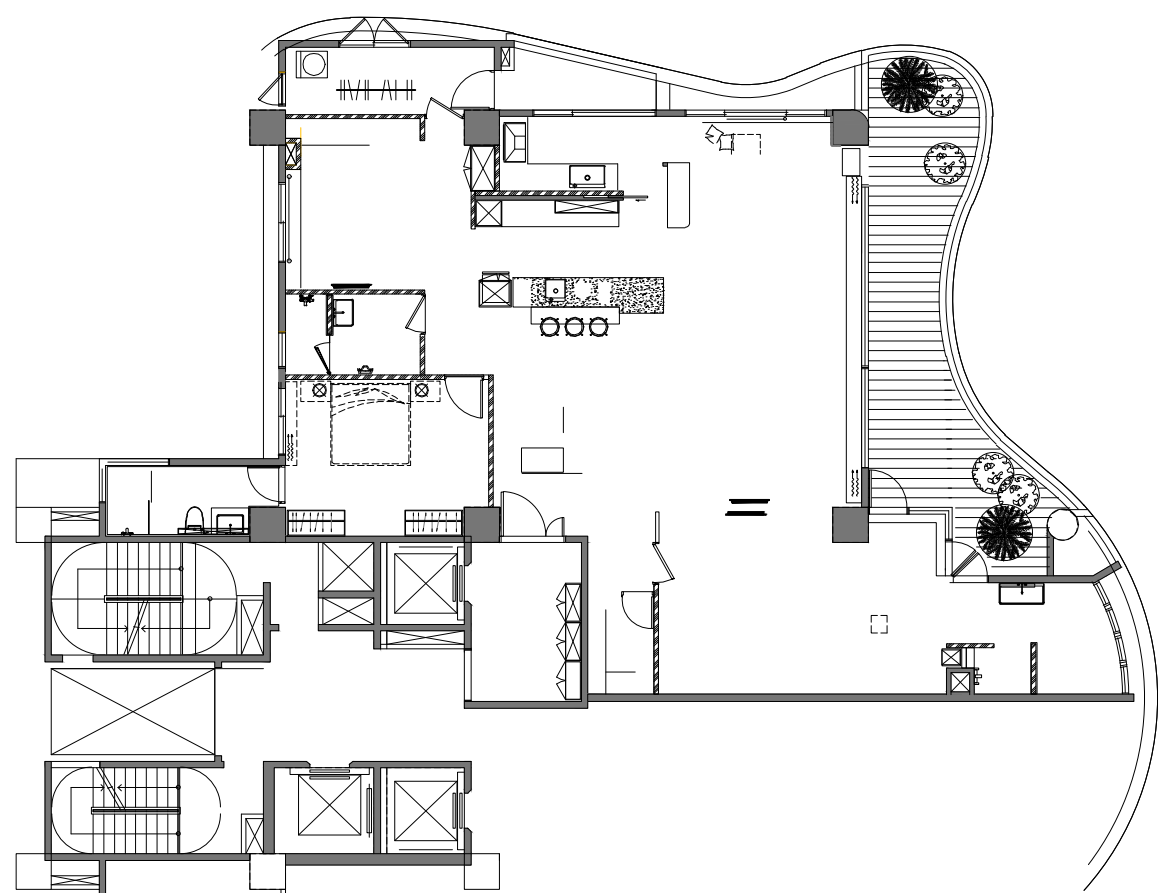


春景書色

Enchanting saga





春天降臨，廣闊的公園綠地，流溢植景人聲，化作璀璨光景投映室內，微風細語，清光漫照，三代同堂的歡聚場景，和戶外的清閒氣氛相偕相生，譜出悠然輕快的家族樂曲。

於寧靜深遠的禪風、木質的溫潤感受中，抹上翠綠生機暖意，加入斯堪地那維亞風格調配，既靜且暖，人文氣質點染北歐風的溫暖，緩和單純日式情調的侘寂，成就祖孫悅然相聚居所。

In the beautiful spring, the brilliant scene of the happy crowds and appealing landscape of the vast park projects into the house nearby. The gentle breeze, the shiny sunlight, and the joyful gathering of three generations respond to the outdoor unwind atmosphere, delightfully play the light-hearted melody.

Exploit the green vitality of Scandinavian style to couple with the tranquil Zen-like and balmy wooden element, moreover, take advantage of a touch of the warm Nordic style with humanistic temperament, then, combine the pure "Wabi-Sabi" Japanese mood, thereupon, create a pleasant residence for the grandparents and grandchildren to reunion happily.





外玄關處，白底水藍潑墨端景，自進門首見便形塑與自然的互動；眼前綿延一片大容量收納的鞋櫃，下方懸空處可放置常用的外出鞋，再進到內玄關，弧狀牆面生成歸宅的柔和流動感，左手邊半圓形的造型，削除明鏡的銳利鋒芒，以裝飾機能為主的衣帽櫃及抽屜，形體留空部分，使得量體輕巧不厚重，也讓區域彼此互通。

The white-blue splashing-ink pattern serves as an end-view in the mudroom artfully tie in the natural feature. And, the vacant bottom space of the large suspended storage cabinet can place the outdoor shoes that regularly wear. Then, walk through the mudroom to the entrance foyer, the bent wall gently presents a dynamic feature, moreover, the mirror of semi-circular shape on the left side softens the sharp-edged perception of clear glass. Also, leaves blank spaces partly of the decorative coat closet, which makes the volume looks lightweight, and skillfully creates an open pattern of the public areas.





以自然和休憩兩大面向為表現氛圍，配合大片窗景的優勢，迎接燦爛天光於室，其中低矮無背靠的沙發，可自由選擇落座方位，讓來訪的親朋好友們盡情談歡。

Take advantage of the large-scale French windows to introduce excellent sunlight, as well as creating a natural and comfy ambiance. And, the backless low sofa perfectly makes a place for the visiting relatives and friends to enjoy gathering happily.

善用外部風光，勾勒窗景為畫，餐廳於窗畔設置一長型臥榻，拉起百葉窗便能愜意觀景，自客廳望來可形成框景畫面；軟裝選品上，選用天然皮革包覆餐椅、大理石做餐桌邊緣，以自然用料搭配圓桌呈現團圓意象。



We set a bed couch beside the window of the dining area, when the blinds are pulled up, people can appreciate the glamorous exterior scenery leisurely. And then, we select leather dining chairs and a round marble dining table of natural features to show up the pleasant situation of reunion.



輕食廚房以兩個倒L形人造石組合而成，較高的檯面可搭配高腳椅使用，形塑輕鬆情調，結合較矮的工作檯，挖空連接處放置調味品，生成簡潔視覺感受，並和周遭適當間距，做出動線彼此連結，狀態不相干擾的互動區塊。

The combination of two upside-down L-shaped bar counters superbly creates an area for preparing light meals. The high bar counter equips high stools to bring about a relaxed mood, then, utilizes the hollowed inward space of the connection to put the condiments to cast a concise and clear vision. Furthermore, arrange a smooth flow of proper spacing to create the areas that well connected yet not interfere with each other.



具備上掀處收納行李箱以及升降桌的多功能室，木質格柵與地板塑造日式氛圍，電視牆處乳白色的馬來漆，紋路帶有職人工質感，搭配左側弧形牆面及暗藏的木色直線造型，讓燈光的展示更加柔和，協同對面白色的衣櫃與溫潤的木色，帶來清閒感受。

The multi-function room plans an open-up area to stow items of luggage and equip a lifting table, moreover, make use of a wooden lattice setting to shape the ambiance of Japanese style. And, the creamy-white TV wall of craftsmanship texture cooperates with the curve-edge wall makes the lighting softer. On the opposite side, the white built-in wardrobe and balmy timber bring a laid-back feeling.





以木質材格柵圍繞的主臥室，帶出清幽日式調性，並藉由梳妝台的造型鏡體，維持空間的穿透性，打造一體兩面的端景鏡，利用鍍鈦質感點綴精緻。

We hope to bring out a tranquil Japanese touch of the master bedroom via the rustic wooden grille pattern, moreover, the stylish titanium-plated mirror of the dressing table artfully present the refined and transparent features of the space.