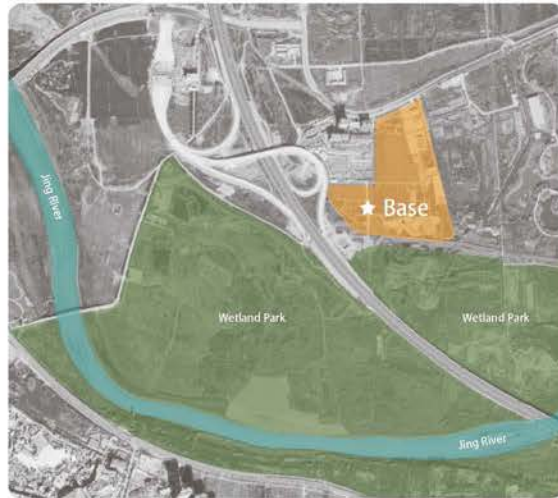




BIRCH FOREST

BIRCH FOREST

CONCEPT



PROJECT OVERVIEW

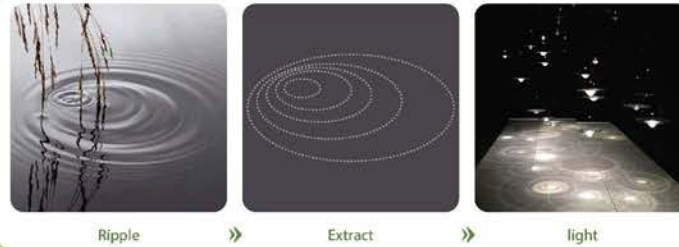
Located in the Xixian New District of Xi'an City, the project is close to the Jing River wetland park in the south. The excellent river water resources, rich green space and beautiful wetland park make it a unique ecological resource. There are also such cultural attractions as Fucha town, Chongwenta, Han Yang Ling Mausoleum Museum and so on. The project as a display of the image of the community space, bearing the display, reception, restaurant functions such as gathering.

FOREST EMPTY DEER DRINK CREEK

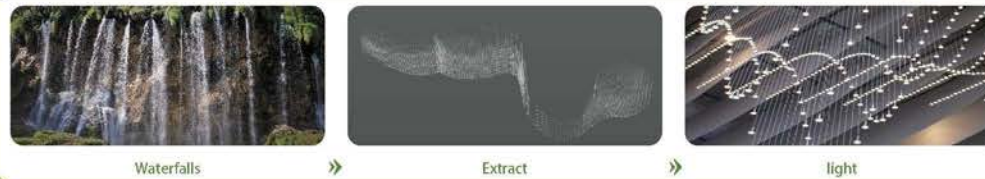
The whole design of the northern song dynasty poet mei yaochen "lushan mountain line" in a poem "forest empty deer drink creek" for the design concept. The woods, the deer, the water, Mei yaochen's deer, in the silence of the empty forest, is leisurely drinking the babbling brook water.



THE FOREST SEEMED MORE AND MORE QUIET AND EMPTY. DEER WERE LEISURELY DRINKING THE BABBLING WATER OF THE BROOK.



WATER & LIGHT



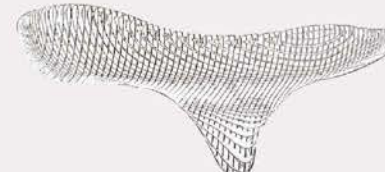
SPACE



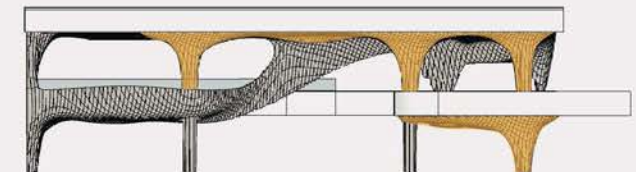
2 - Tree

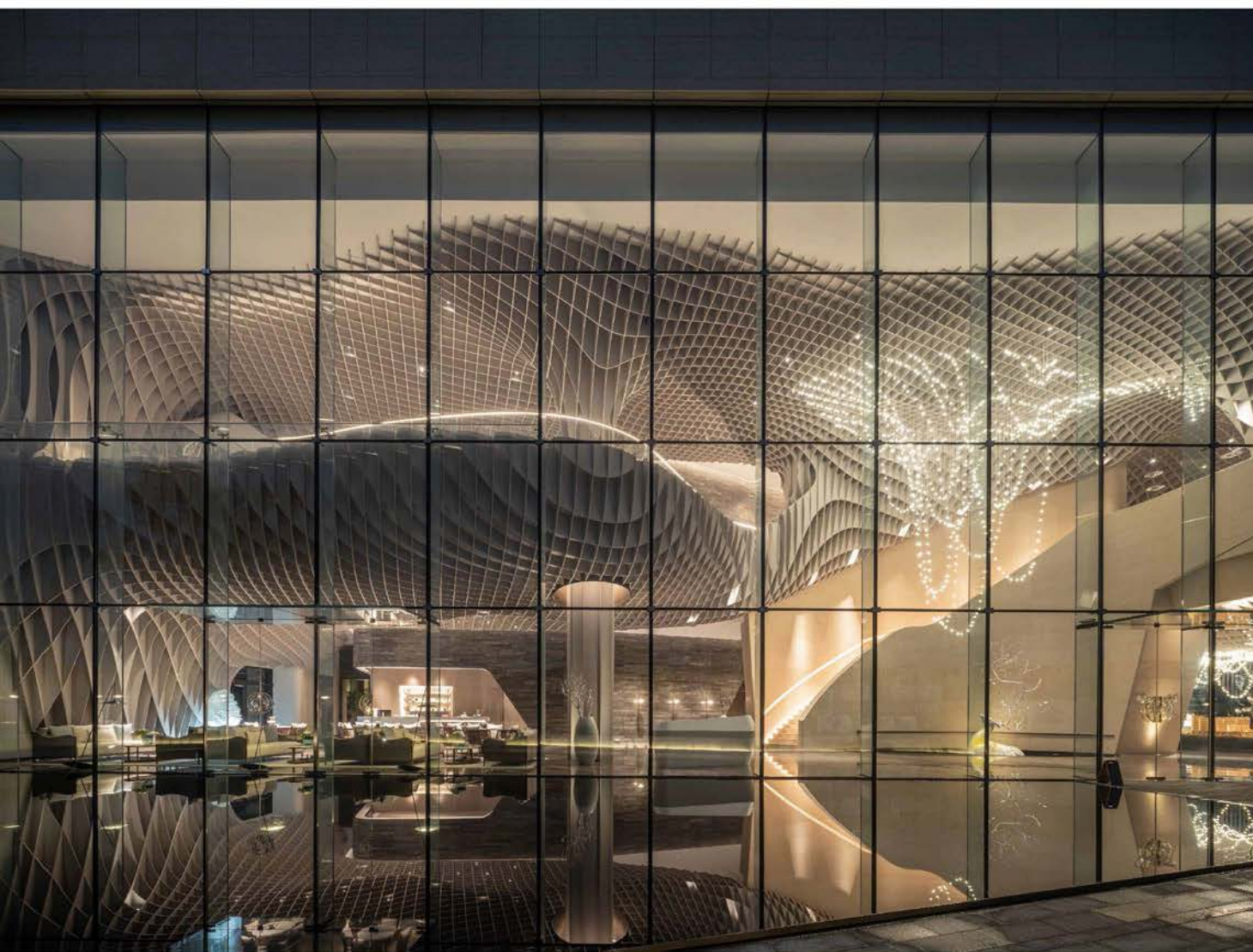


3 - 3D



4 - FINAL





The whole design takes "Dear drink at trackless stream" in the poem "a trip to Lushan Mountain" by Mei Yaochen as the design conception, it is a poet of the Northern Song Dynasty. Integrated forest, deer and water those three elements into the design. Under Mei Yaochen's description, the quoted words has a meaning of the deer were leisurely drinking the gurgling water in a stream in such a silent and empty mountain forest.



The grid system of indoor ceiling takes the intertwined canopy in the forest as the intention, abstracts the canopy group images in the forest into a tensile architectural structure, which has become the most expressive image characteristic of this case. The whole indoor space is neatly arranged like an artificial forest in the whole forest, which perfectly matches the setting of "forest living room". We use the mortise and tenon joint technique to connect everything together. Mortise and tenon joint is a common used skill in Chinese traditional architecture, drew inspiration from the crystallization of the wisdom of our ancestors, it creates a visual art effect for space creation as well as completes the interpretation of traditional culture.



