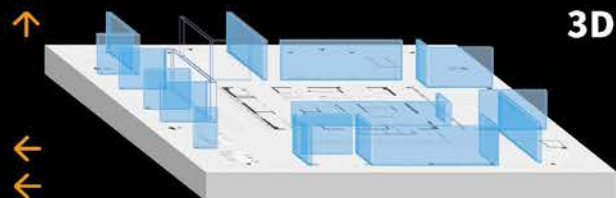




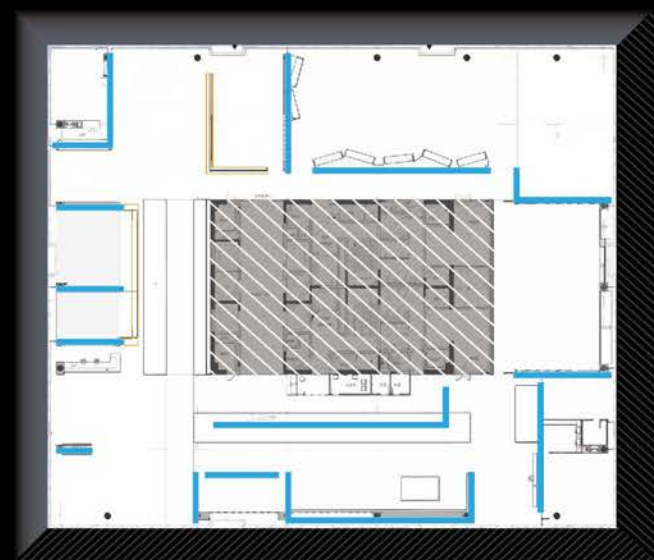
BOUNDARY

BOUNDARY

CONCEPT



3D



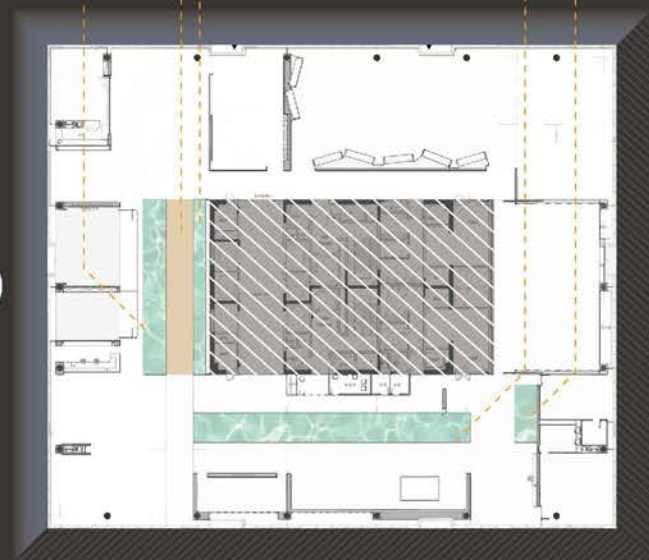
BOUNDARY (WALL)

PROJECT OVERVIEW

Located in the Xixian New District of Xi'an City, the project is close to the Jing River wetland park in the south. The excellent river water resources, rich green space and beautiful wetland park make it a unique ecological resource. There are also such cultural attractions as Fucha town, Chongwenta, Han Yang Ling Mausoleum Museum and so on. The project as a display of the image of the community space, bearing the display, reception, restaurant functions such as gathering.



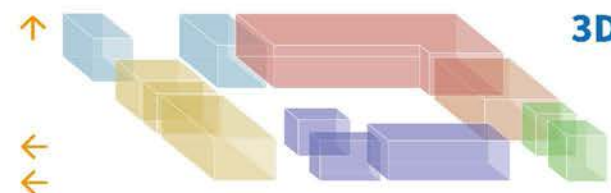
3D



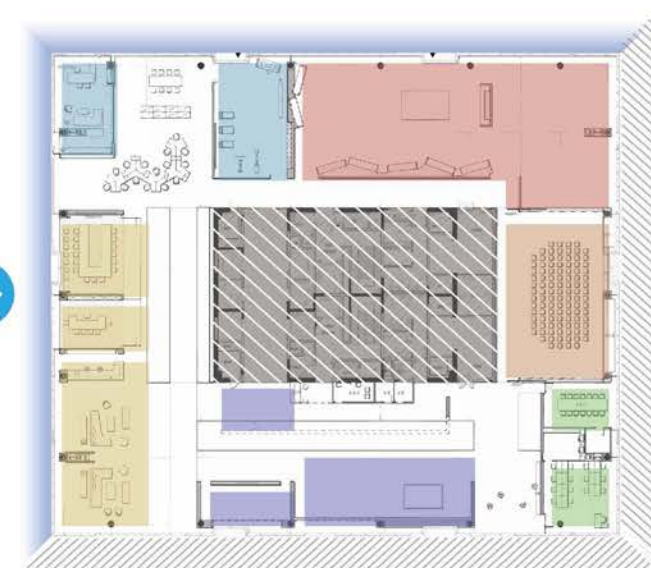
WATER & BRIDGE

FOREST EMPTY DEER DRINK CREEK

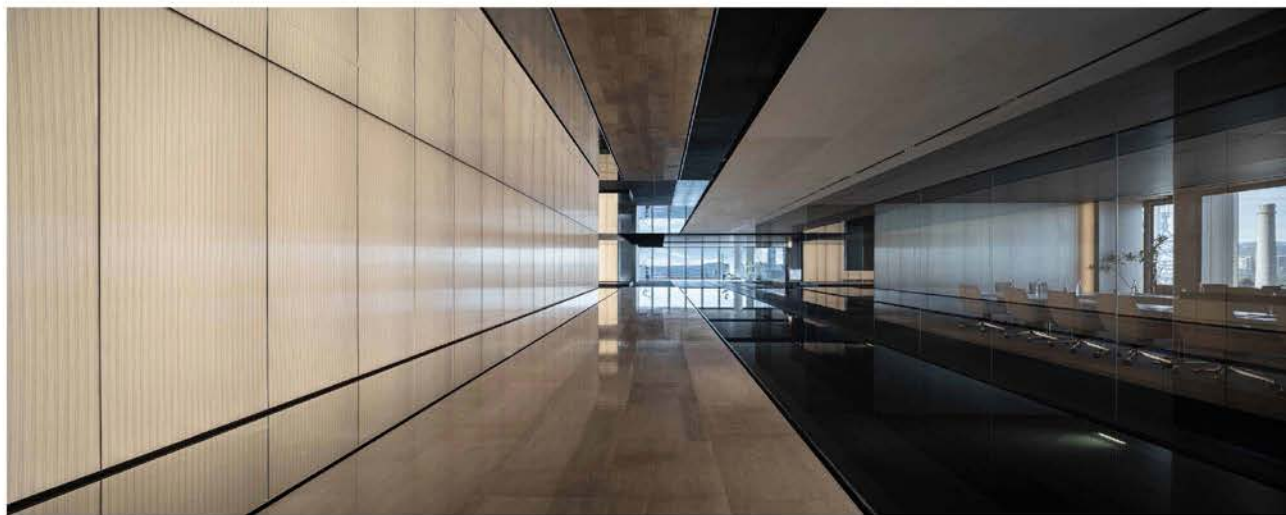
The whole design of the northern song dynasty poet mei yaochen "lushan mountain line" in a poem "forest empty deer drink creek" for the design concept. The woods, the deer, the water. Mei yaochen's deer, in the silence of the empty forest, is leisurely drinking the babbling brook water.



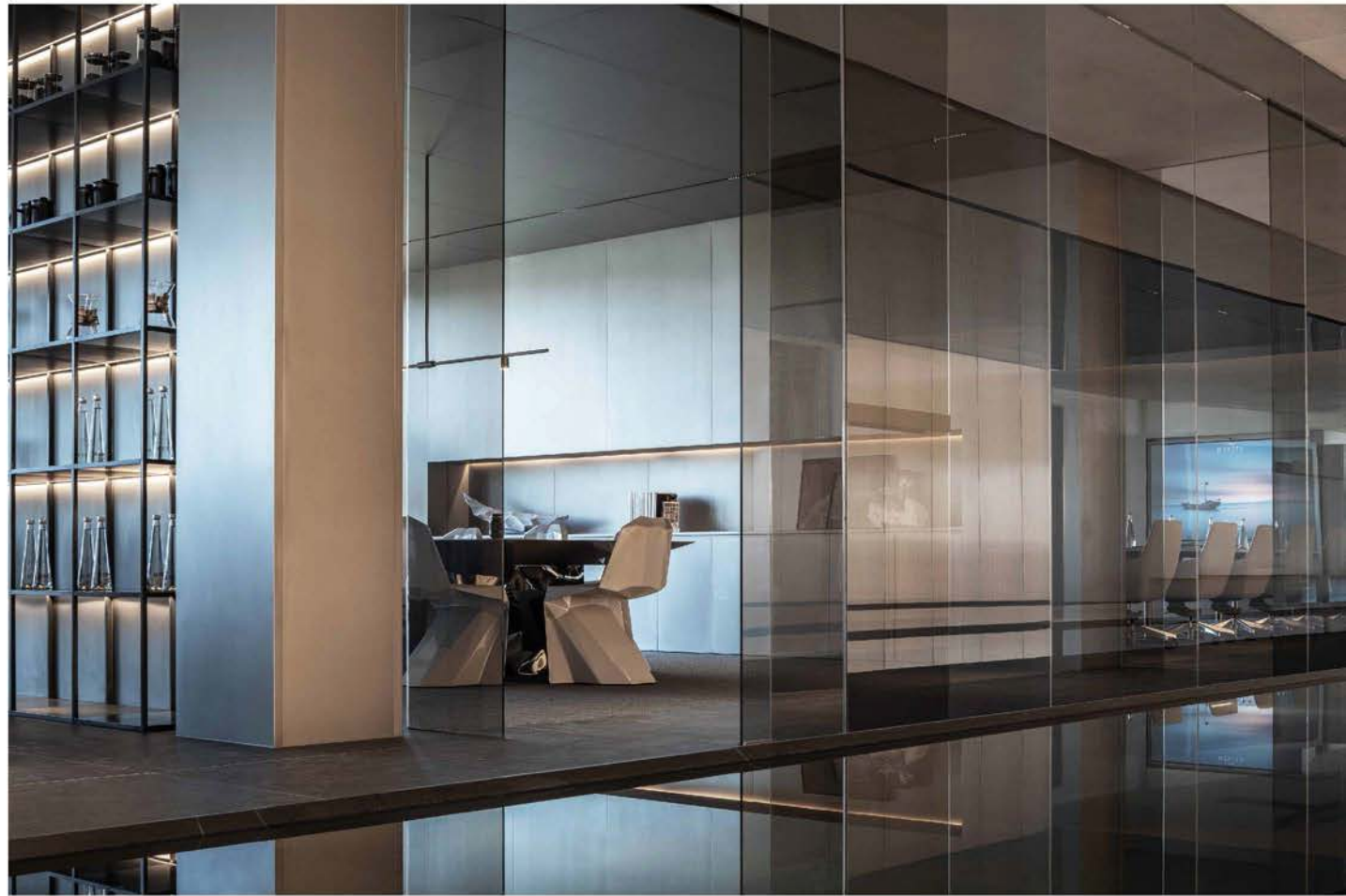
3D



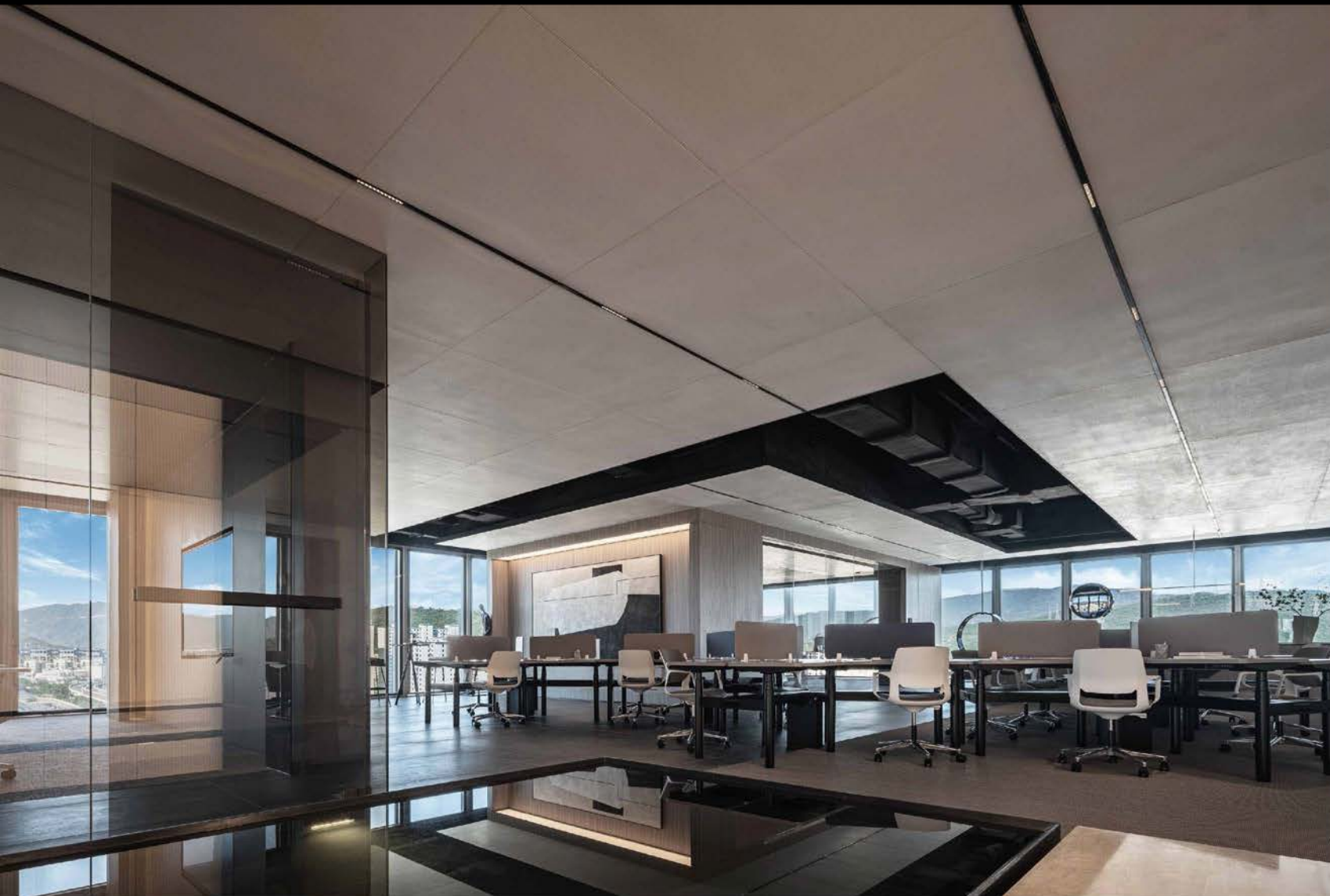
COMBINE (ROOM)







The conference room is full of glass and natural light to create a flow space, allowing the space to have great visual transparency and flexibility from the inside out. Conference rooms of different specifications are carefully arranged for different types of client and staff team interviews.



The collaborative office area is equipped with open sitting/standing semi-private workstations to facilitate collaboration and interaction among employees. Ergonomic lifting desk leaves employees the right to choose their own work style.





