

THE CRYSTAL CLUBHOUSE



CATALOGUE

01 | UNIQUE PROPERTIES / PROJECT EXPLANATION

02 | CONCEPT

03 | PRODUCTION OR REALIZATION TECHNOLOGY (AND MATERIALS)

04 | TECHNICAL PROPERTIES

1.UNIQUE PROPERTIES / PROJECT EXPLANATION:

A. Function:

Create a community shared club to enhance interaction among people, thus featuring spaces like a tea club, shared book bar, sunlit pool, gym, and yoga room.





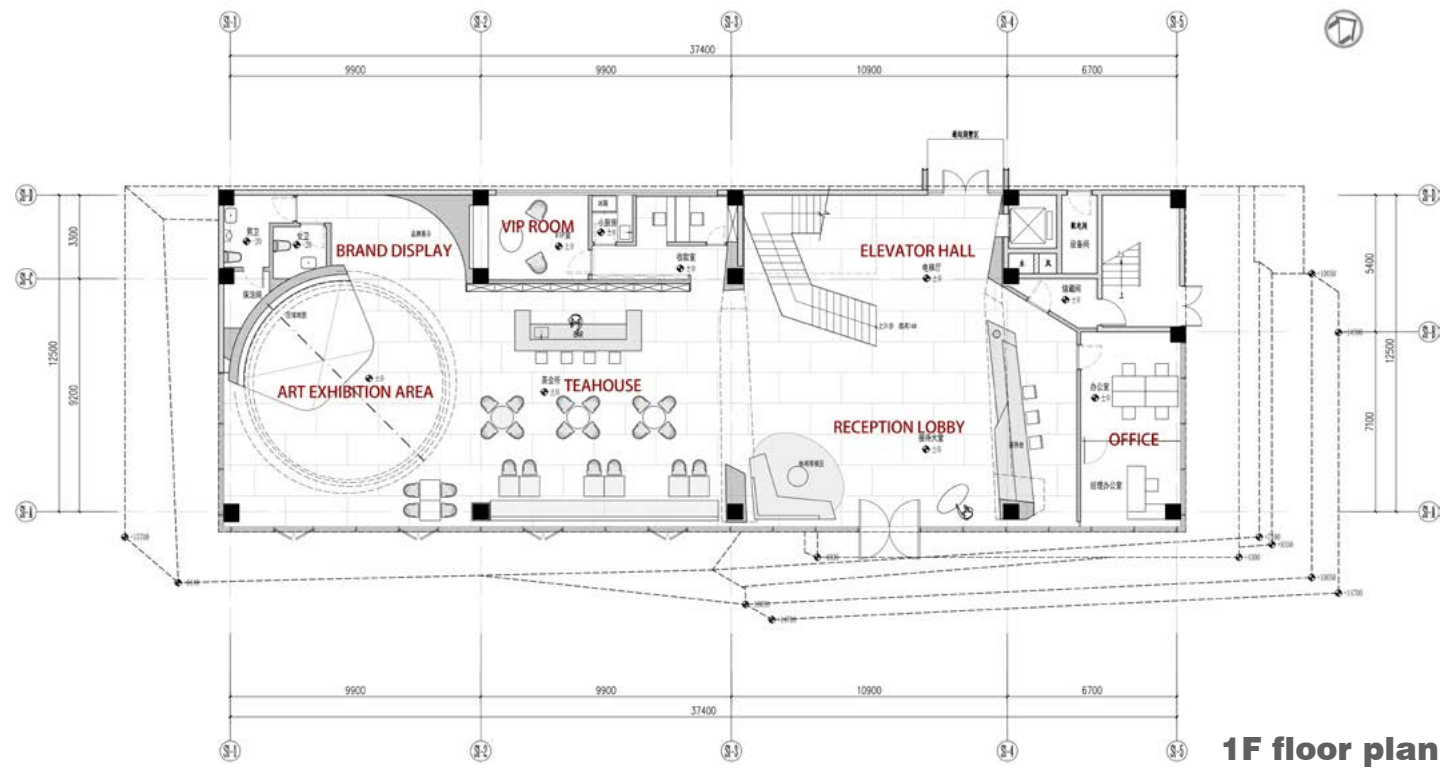
B. Purpose:

- ① *To deepen parent-child communication through the establishment of interactive spaces;*
- ② *To build a community shared space centered on physical health;*
- ③ *To strengthen neighborhood ties and foster interactions between families.*



C. Approach:

Integrated creation of architecture, interior design, and soft furnishings.



1F floor plan



VIP ROOM



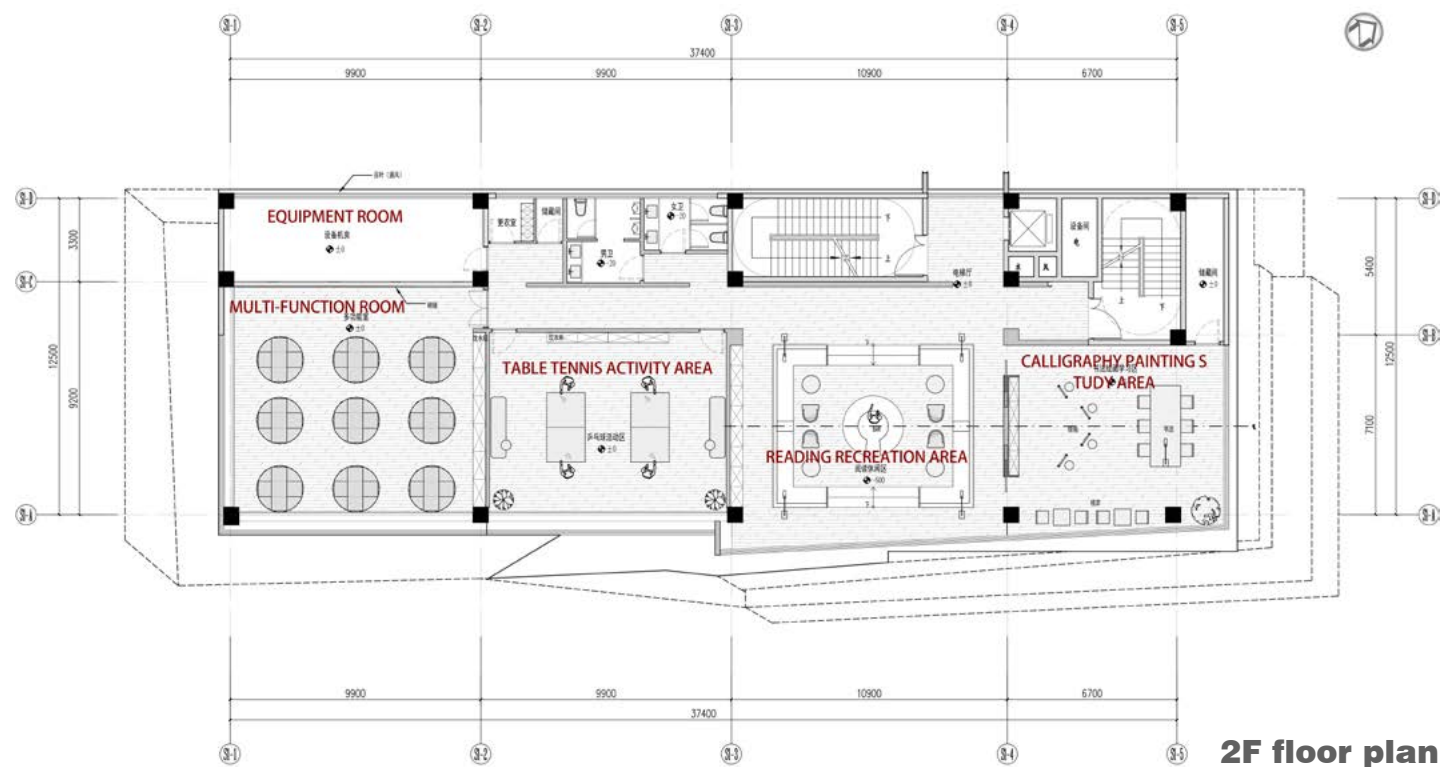
RECEPTION DESK



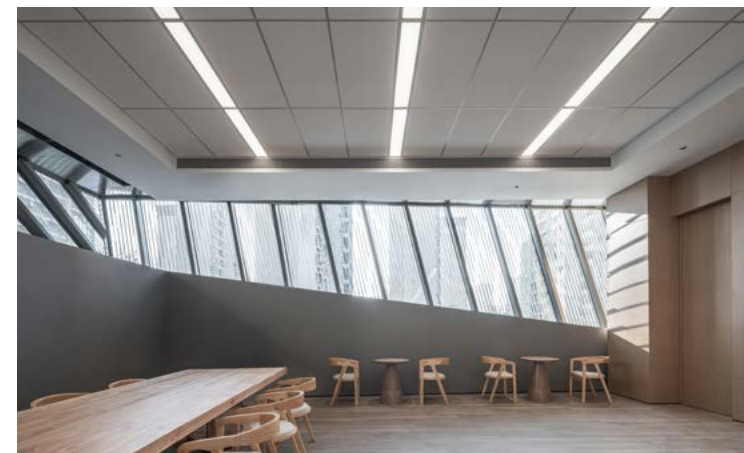
RECEPTION LOBBY



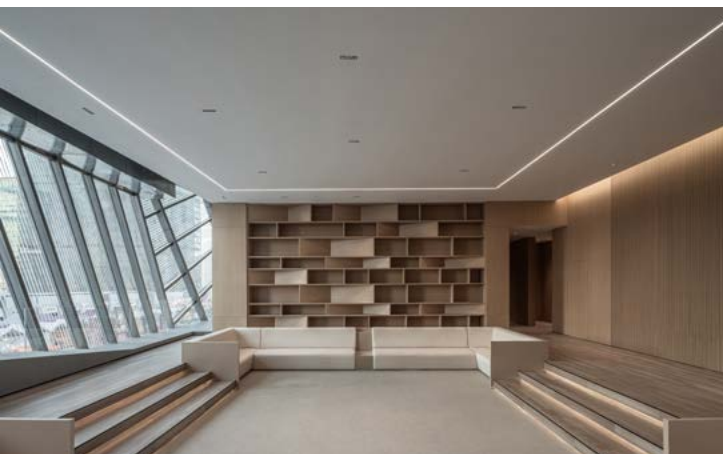
TEA HOUSE



2F floor plan



CALLIGRAPHY PAINTING STUDY AREA



READING RECREATION AREA

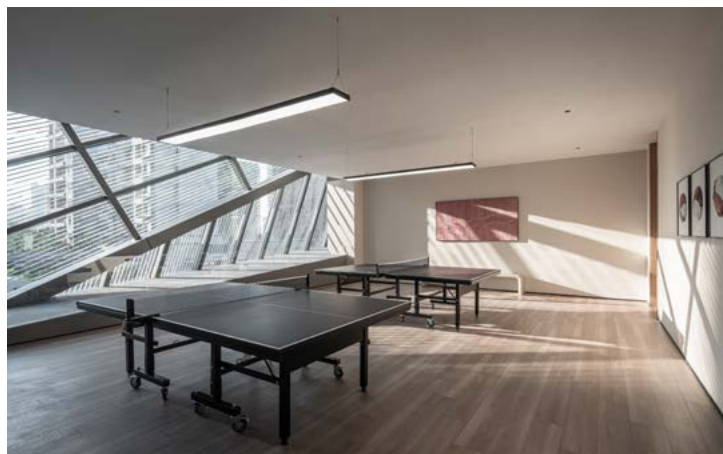
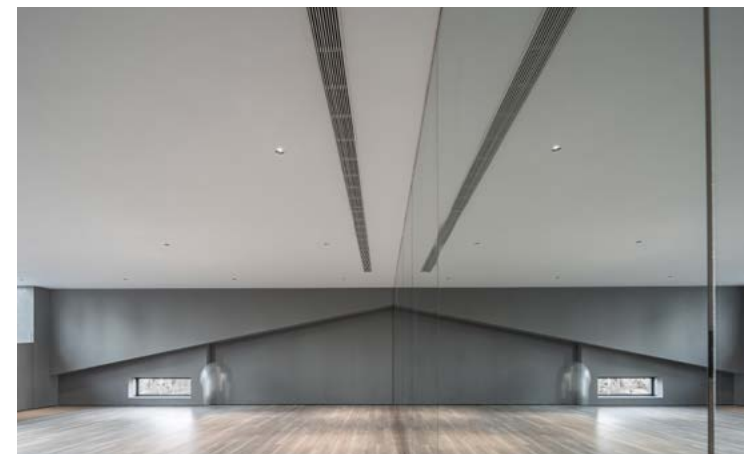
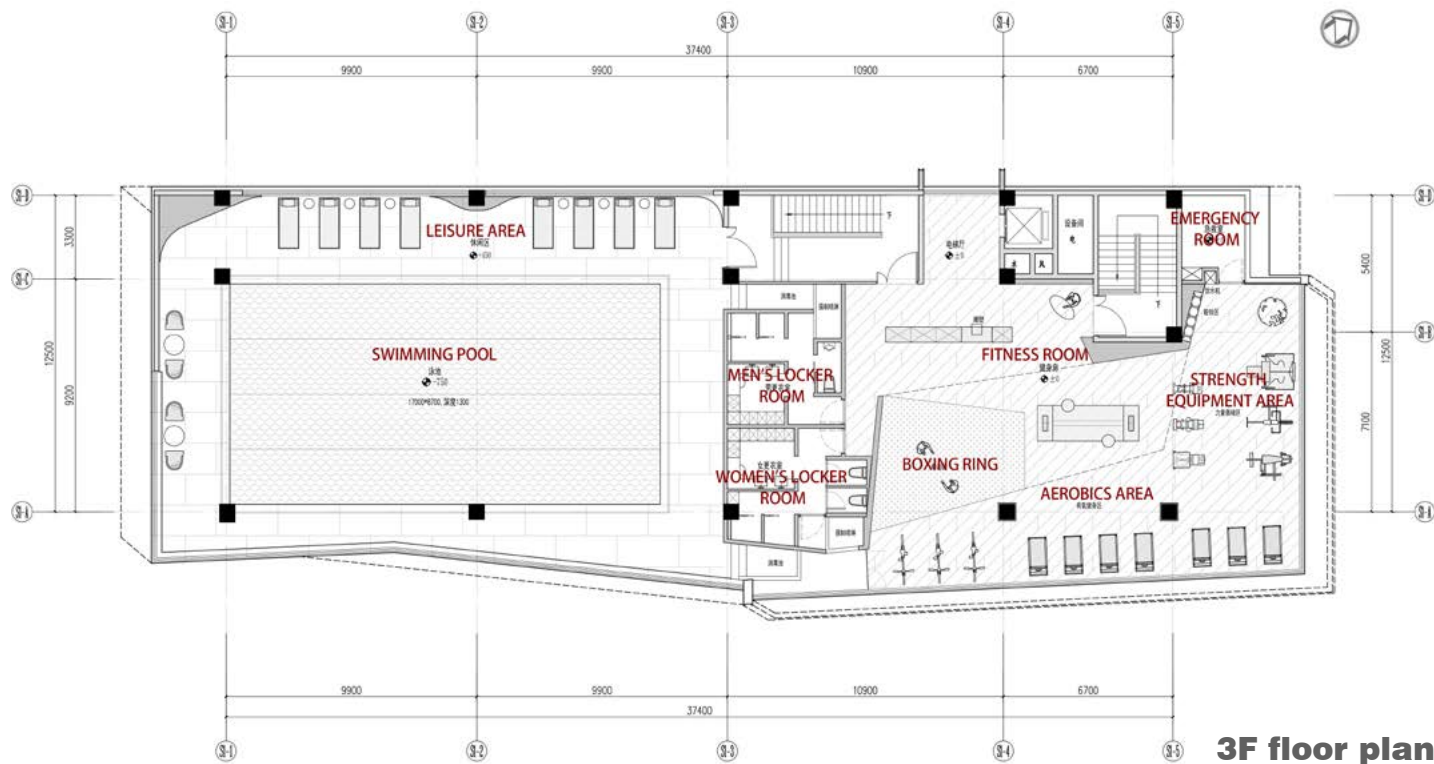


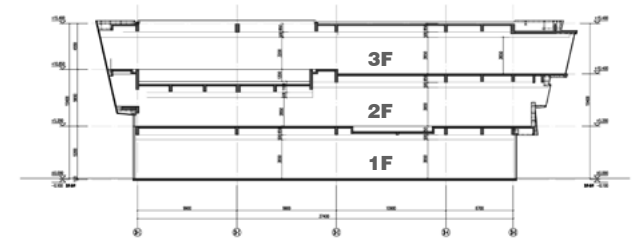
TABLE TENNIS ACTIVITY AREA



MULTI-FUNCTION ROOM



3F floor plan



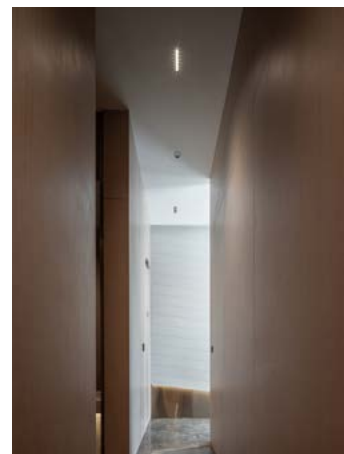
ARCHITECTURAL SECTION DRAWING



SWIMMING POOL



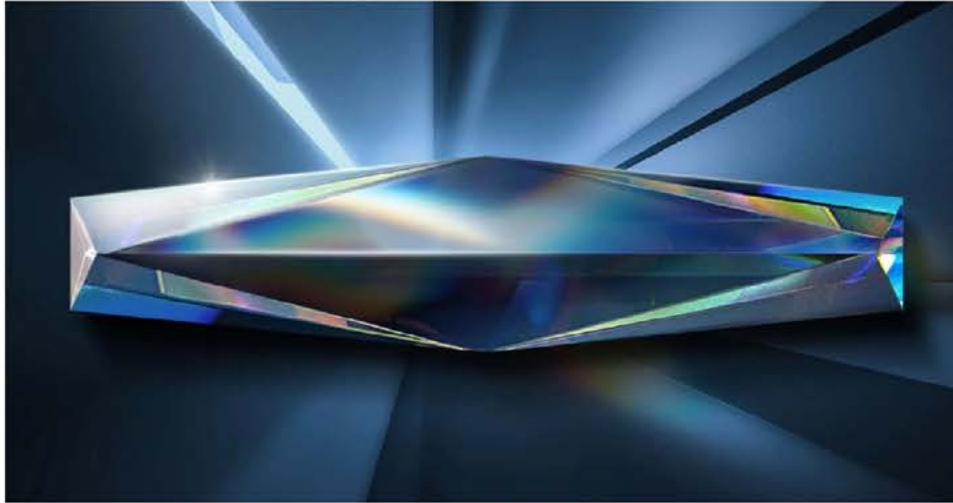
AEROBICS AREA



DRESSING ROOM

CONCEPT

Inspired by "crystal", the design uses its refraction characteristics to design multiple folding surfaces, enhance the transparency and openness of the space, show people's vivid activities in the glass box building, and create a lively and harmonious atmosphere.



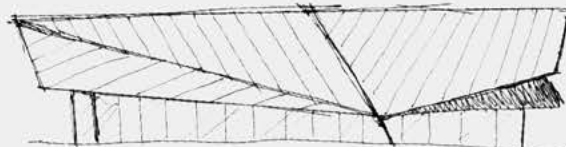
1-CRYSTAL



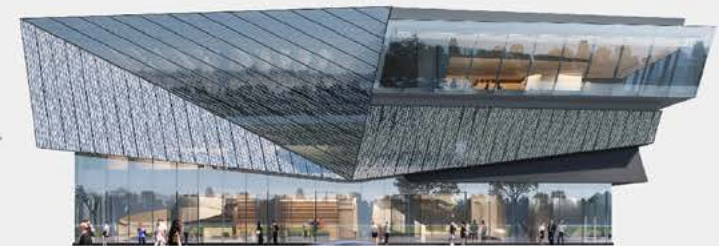
5-FINAL



2-EXCEPT



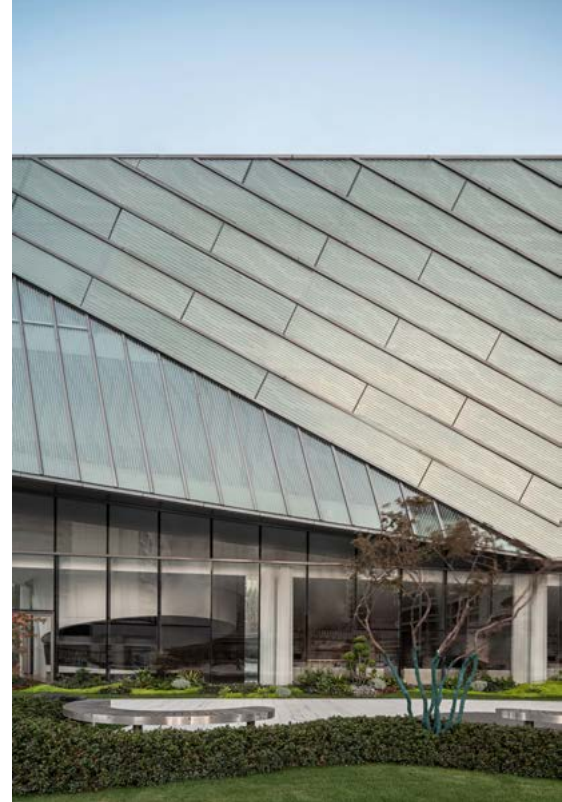
3-SKETCH



4-3D

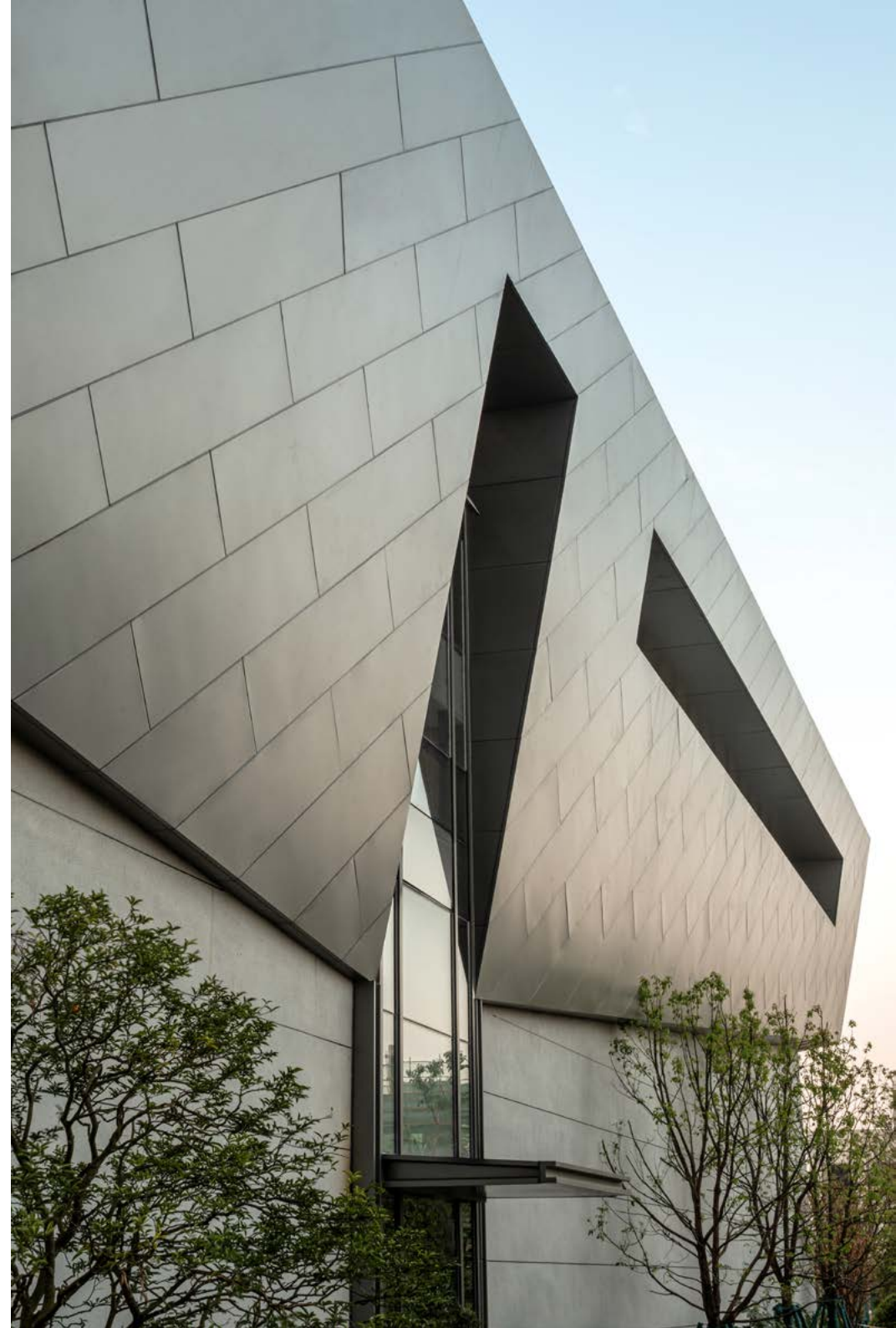








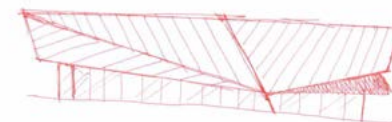
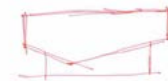


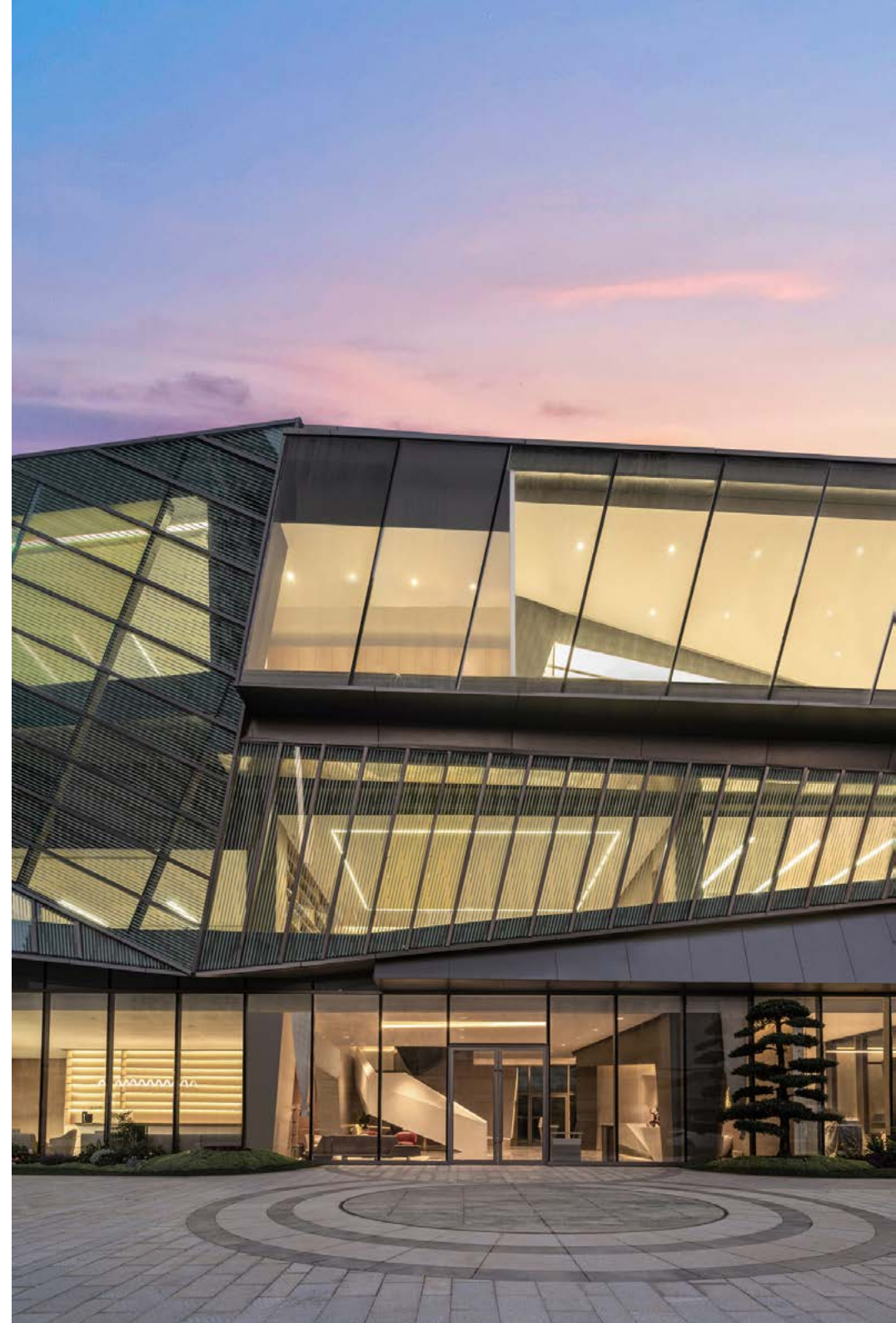


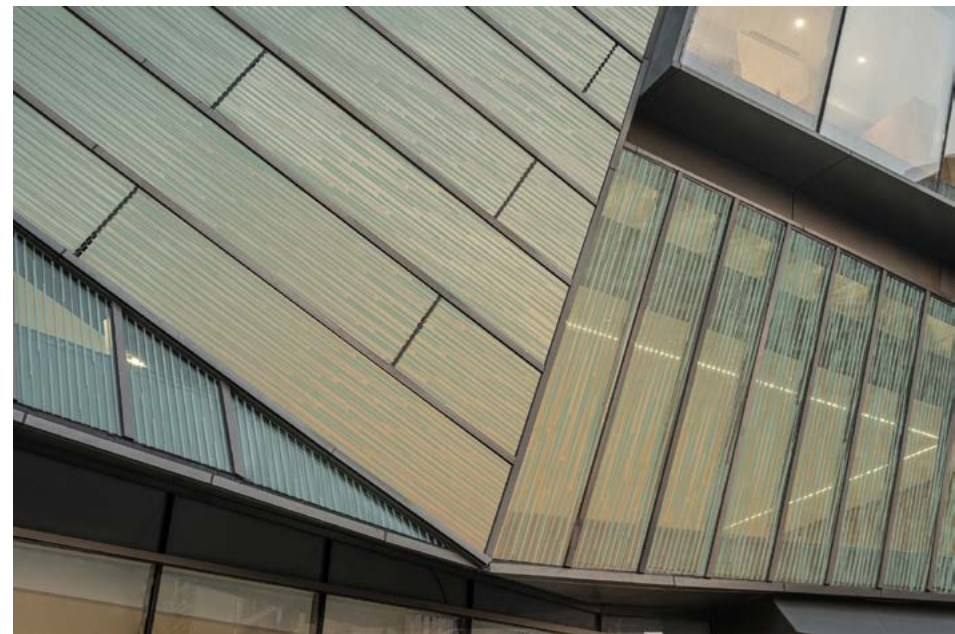
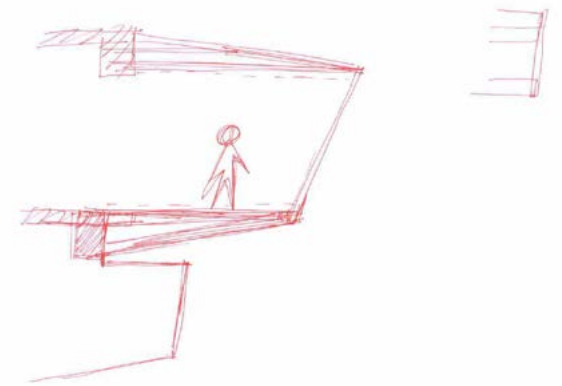


3.PRODUCTION OR REALIZATION TECHNOLOGY (AND MATERIALS):

To ensure the building's transparency, the ground floor uses high-transmittance low-emissivity glass, combined with custom deep white glass and dark gray anodized aluminum panels. This adds richness to the building's facade, making the overall visual effect appear light and as if floating in mid-air from a distance.









RECEPTION DESK

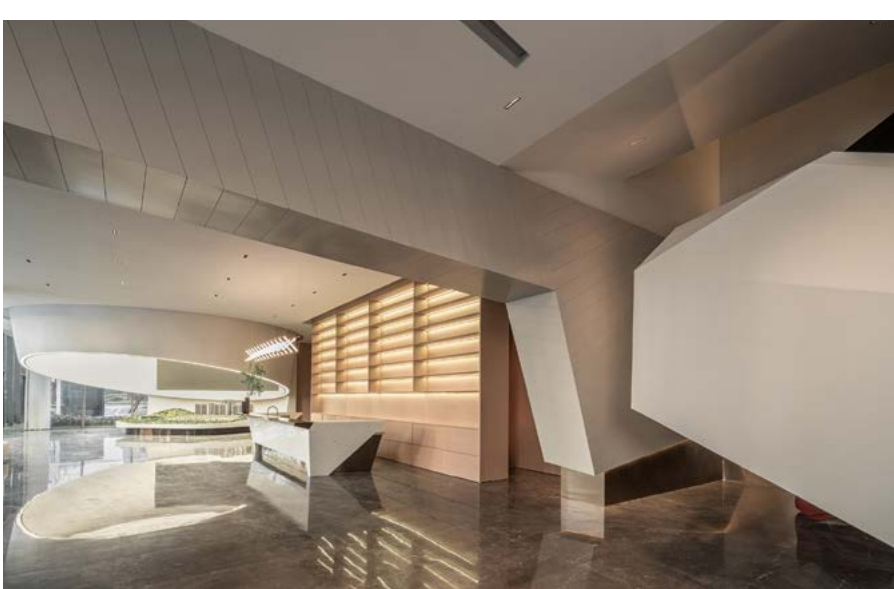


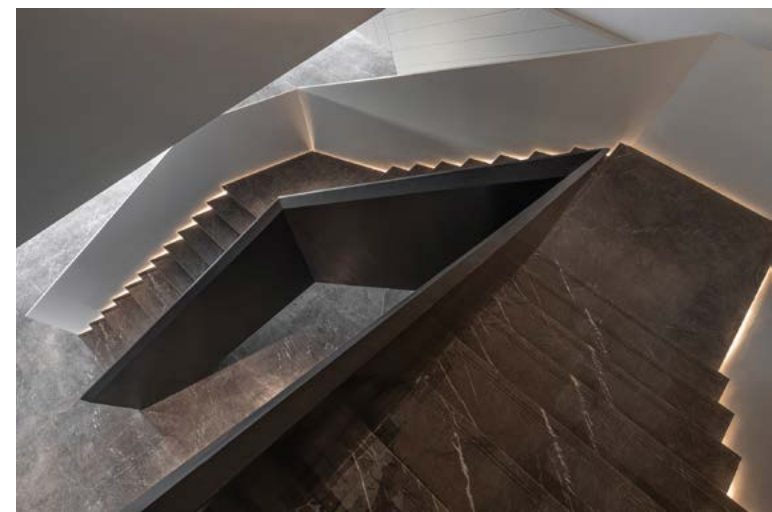


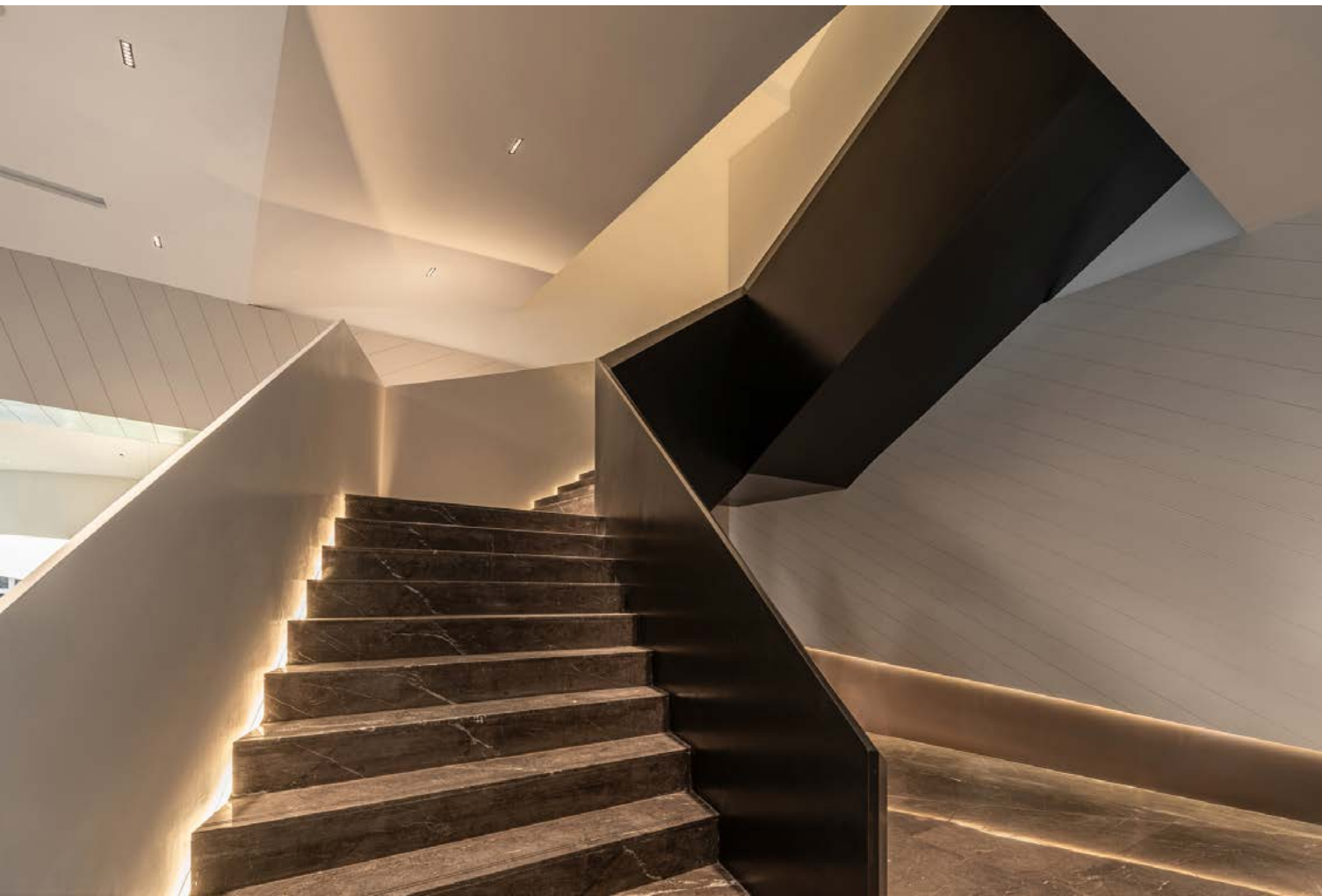
RECEPTION LOBBY









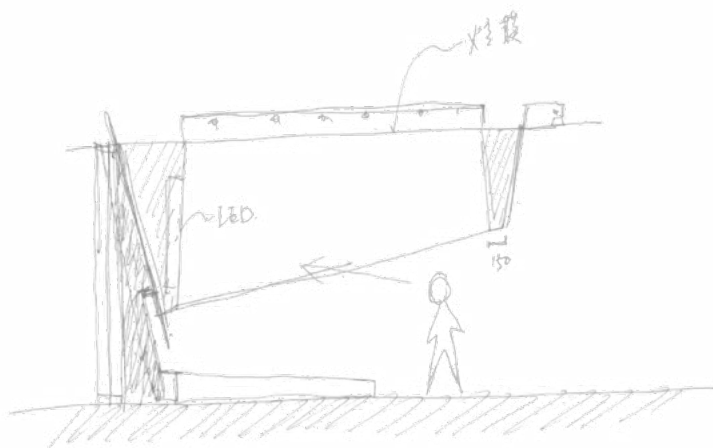




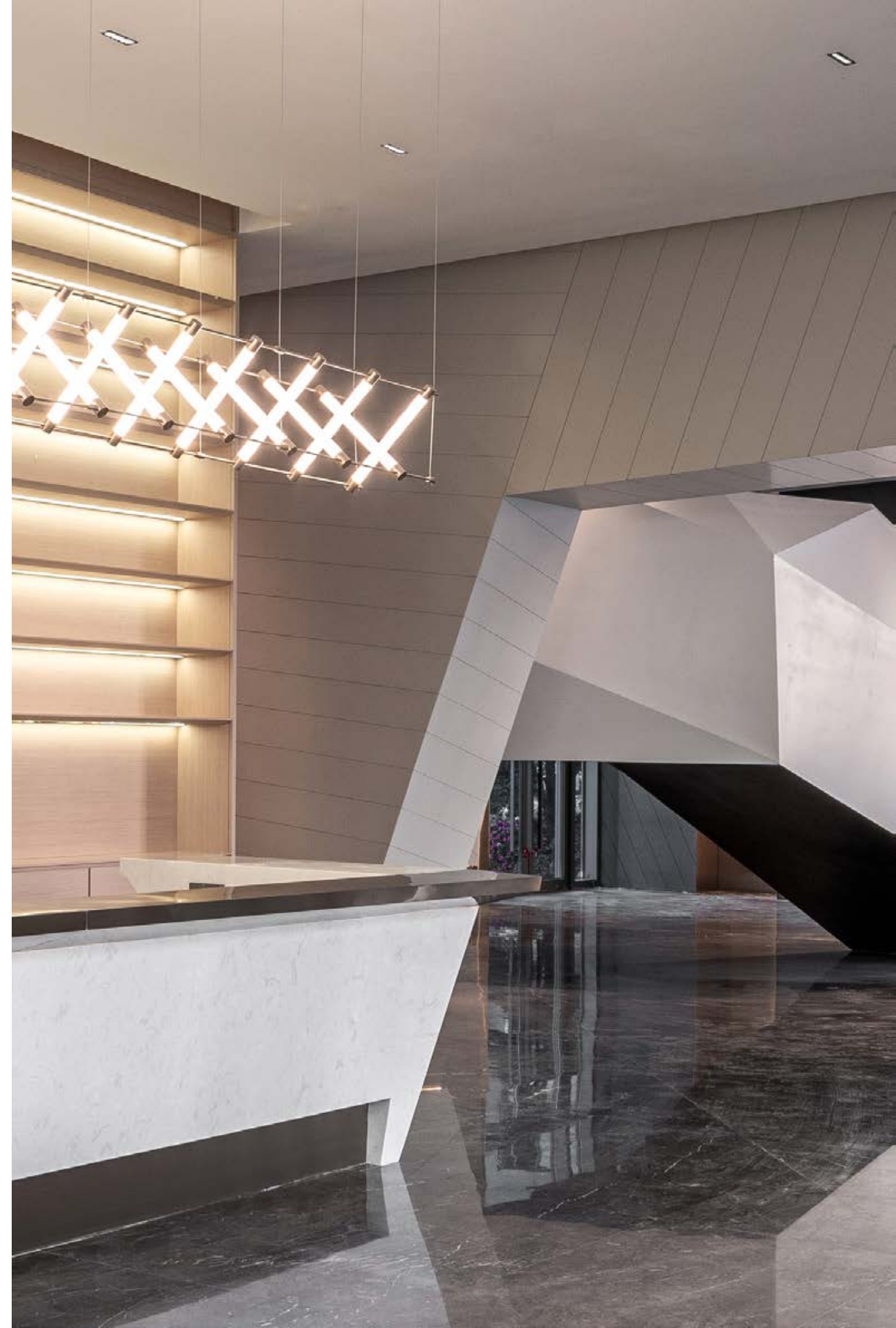




TEA HOUSE



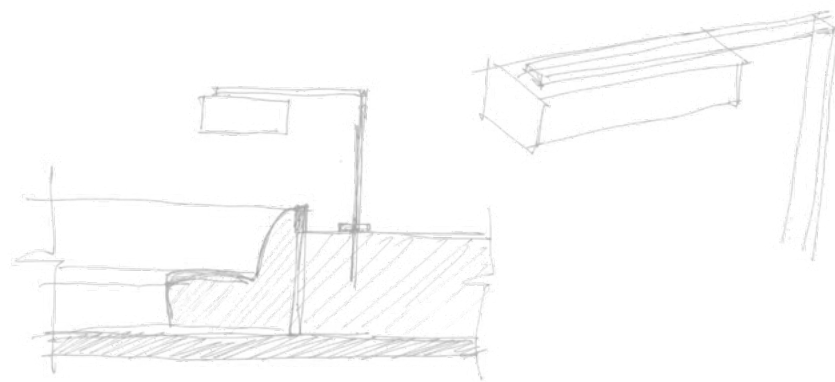






***READING
RECREATION AREA***

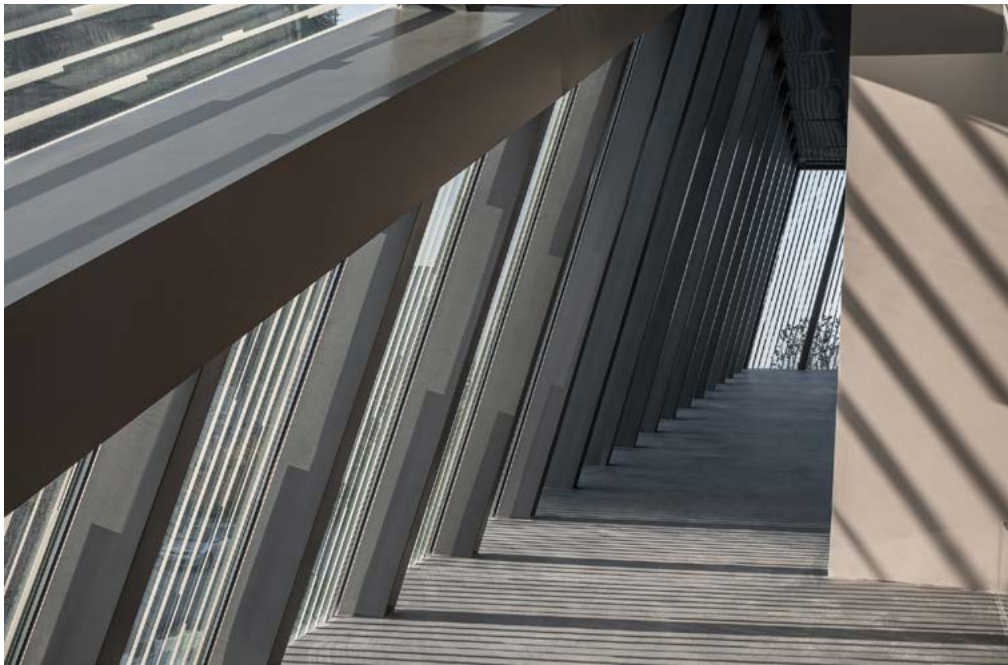






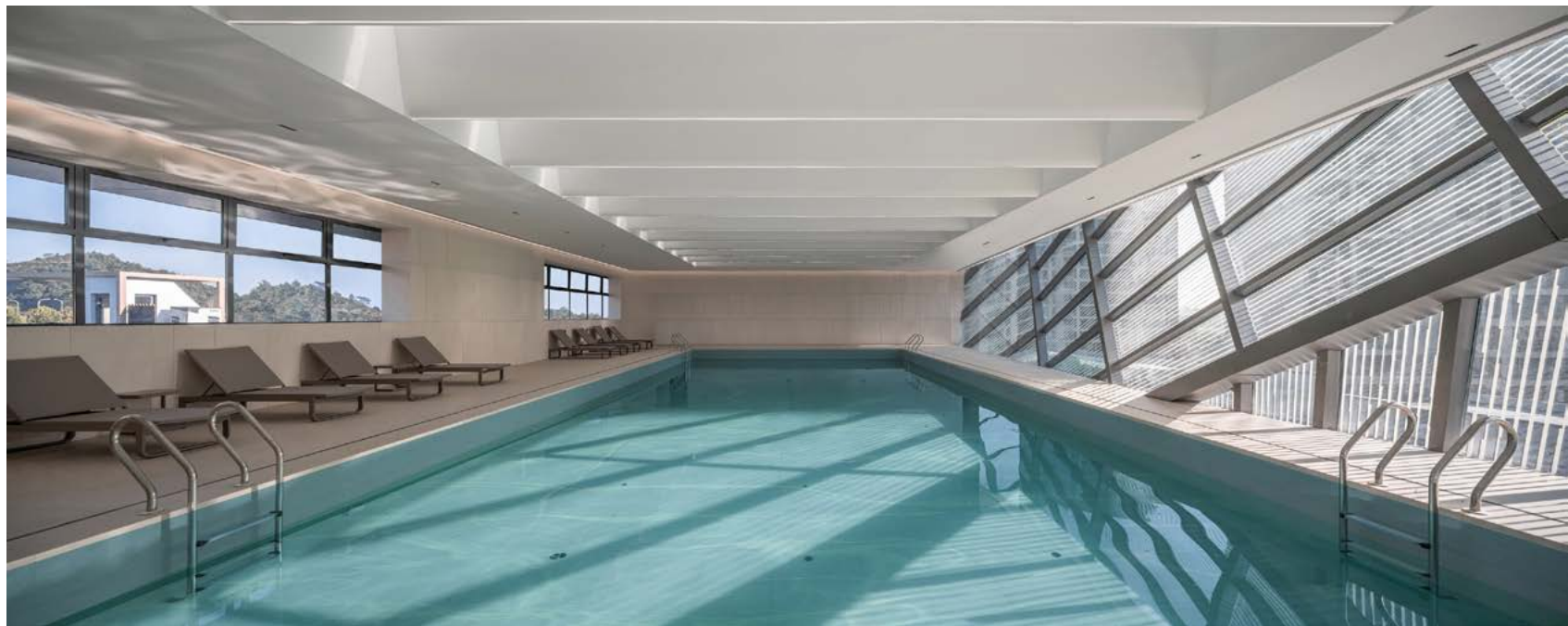
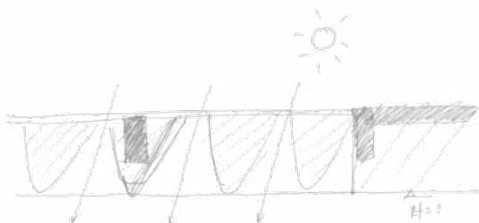


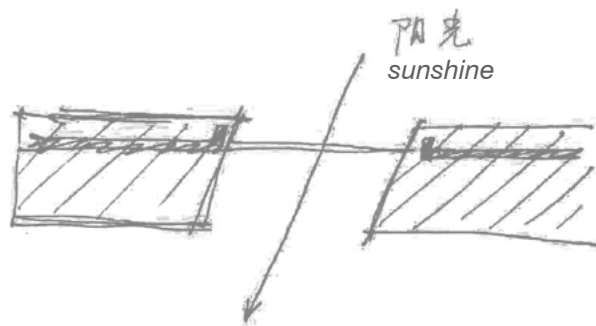
***AEROBICS AREA
AND
TABLE TENNIS ACTIVITY AREA***





SWIMMING POOL





Through integrated indoor-outdoor design of the architecture, a multifunctional community center has been created, promoting visual and physical interaction between the interior and exterior.

The use of glass enhances light and visual connections, allowing indoor and outdoor landscapes and activities to blend seamlessly, creating a private yet open environment.

This design not only allows residents to enjoy natural light and beautiful scenery but also fosters neighborhood interaction, strengthening community cohesion.

