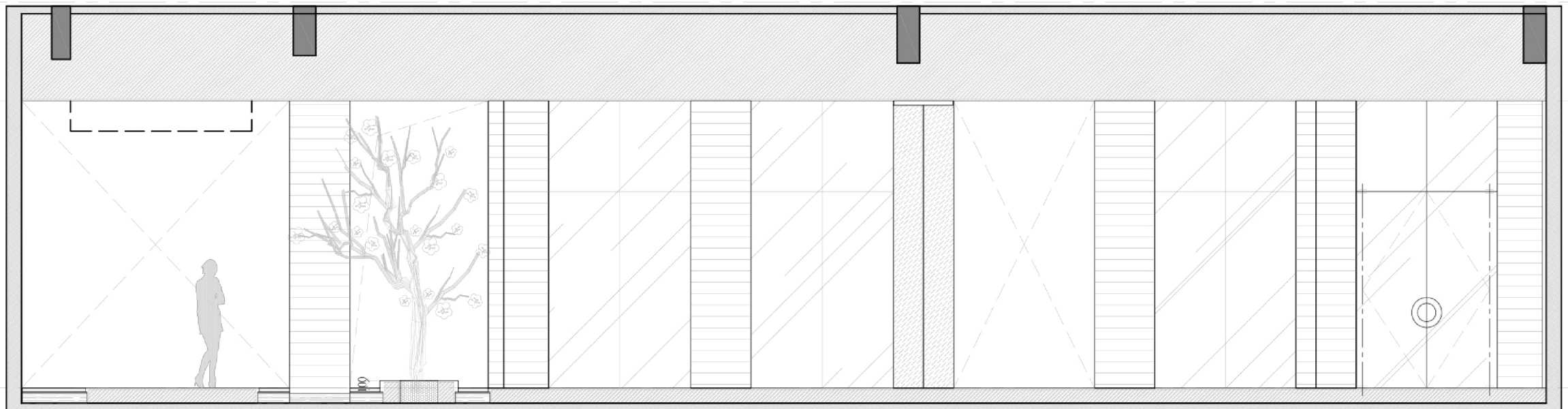


CENTRAL PARK



The project is located at the intersection of Xijing Road and Xixi Avenue in the high-tech zone of Xi'an, next to Xi'an's largest urban ecological park, about 1700 mu(about 113.4hectares), and has become a natural landscape resource for the project. Every inch of land and every plant has got a very poetic expression. The designers hope to use the "Central Park" as the theme, combined with the guest line, and use the "Introduction, elucidation, transition, and summary" design method to create a reception center with park experience.



HARMONY BETWEEN NATURE AND ARCHITECTURE D1 CONCEPT



作品名稱	CENTRAL PARK		
創作時間	2019.5	設計者姓名	凌子達
職業	設計總監	公司名稱	KLID達觀國際設計事務所