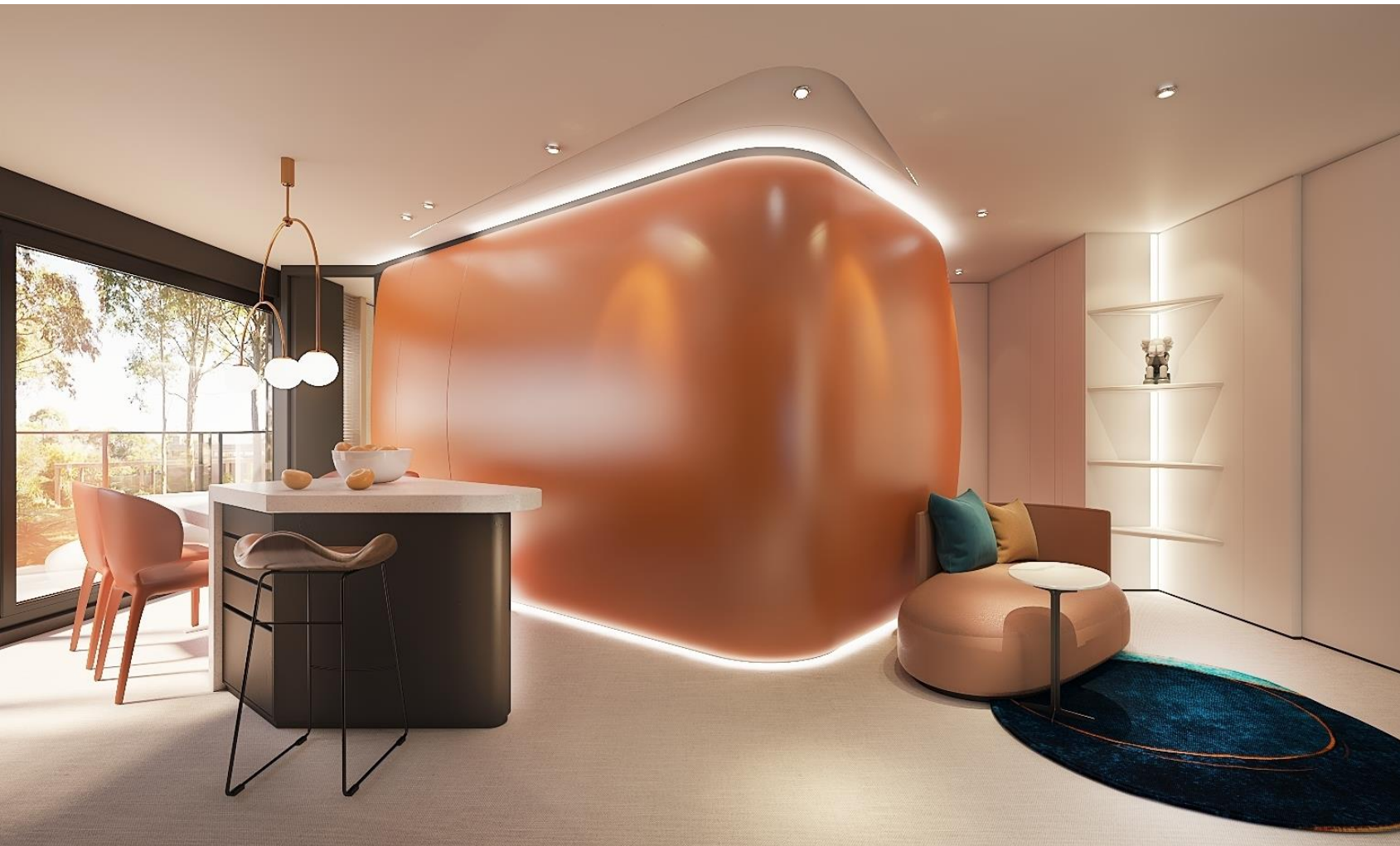


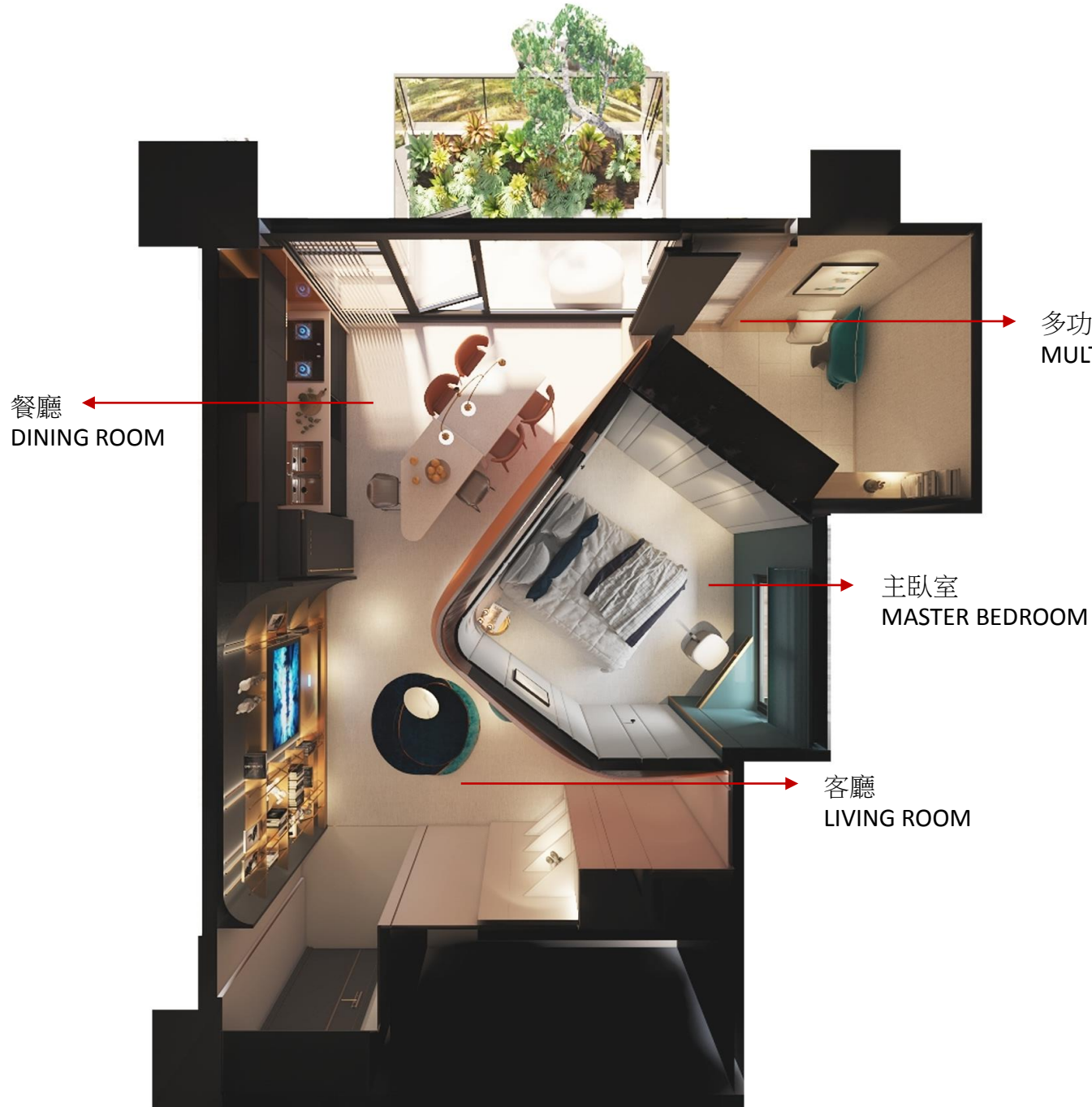
藝涵

Sense of internalized aesthetics



小坪數的空間規劃中，
「開闊視野」與「動線及機能」成為設計的首要考量
在空間的中心點將渾圓弧線一筆一分為二，界定了公
領域及私領域的界線，利用此手法將採光與戶外景致
引入到空間的最內側，打破小坪數單面採光不足的缺
陷，並為公領域保留了大面窗的全視野將空間的視覺
至走道延展至窗外的綠意藍天，自然景緻便化作了屋
內最好的設計延伸，達到內外的串連的通透感。

Broad views and flow of space are two of the most vital design elements to consider when planning a small space. By using a rounded arc to divide the home into a public and a private space, we bring in light and the exterior view into the depths of the room; defeating the common disadvantage of small-sized spaces not receiving enough sunlight. A full exterior view is preserved for the public by large windows that stretches your vision from the corridor to the window and beyond. The natural scene of greens and blue sky proves the home's best continuance of translucent design.



動線規畫

動線上由環狀概念為主軸，貫穿各個空間，由客廳、餐廳、主臥室至客房（多功能室），各個格局皆串聯在一起，搭配將畸零空間發揮到淋漓盡致，利用當代藝品將生活藝術化，並置入收納規劃，不只減低坪數的浪費，更大大提升了動線的機能性，並於各個空間皆有多功能的使用方式，在這循環的動線中，我們於主臥室的部分加入了雙入口動線的設計，至衛浴、廚房都能快速地抵達，為生活創造良好的使用便利性，而和室空間則擁有多功能的使用方式，可作為書房或小孩房用途，在雙親或朋友拜訪時，亦可作為招待客房使用。

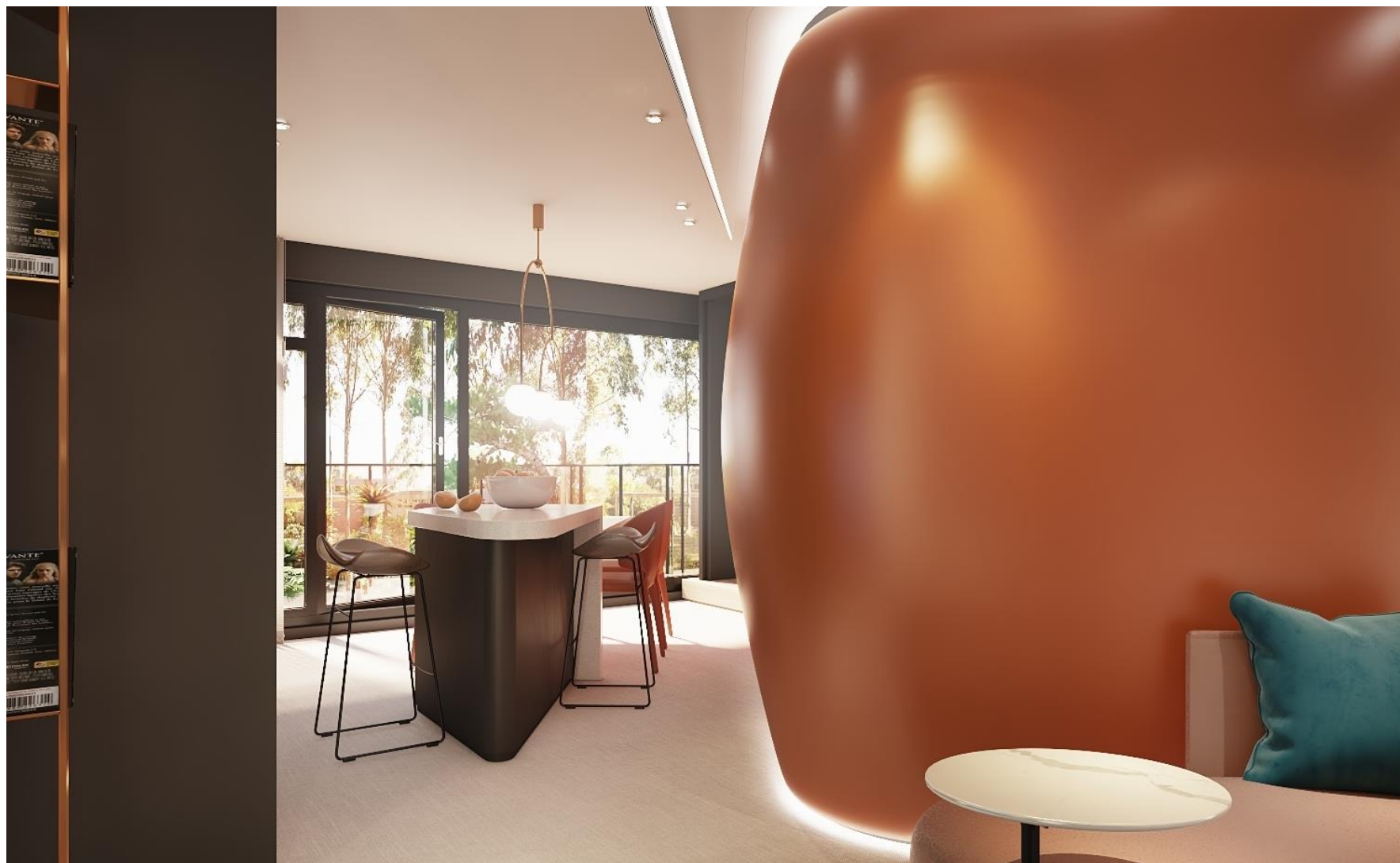
Space flow is centered around a circular concept where it crosses through different spaces from the living room and dining room to the master bedroom and guest rooms (multipurpose room). By connecting the spaces together, utilizing the distorted space to ultimate use, placing modern artworks to alleviate the artistic aspects of lifestyle and implementing a lot of storage space, no only is there low wastage of space but also an increase of space flow functionality. Every space has multiple ways of usage such as the master bedroom conveniently having two entrances to efficiently enter the bathroom or kitchen. Not only can the multipurpose room be considered to use as a study or wardrobe, it can also serve as a guest room with family or friends visit.



「古漆者，光澤華，似烏金而非寒，明麗堂皇。」
漆器工藝 - 古代稱之為“髹飾”，是一項深具悠久歷史與東方文化特色的技藝。

圓弧主牆由漆器的為概念呈現，運用熱情飽滿的橘紅色定調整體氛圍，暖而溫潤、質樸而明亮，色彩的對比綻放空間更大的視覺張力，與軟裝中熱情濃烈的黃色、寶藍色形塑了奔放的跳躍感，於空間中注入一抹鮮明的浪漫異國氛圍，神祕而瑰麗的質感氛圍。

An arced main wall inspired by lacquerware uses a passionate and saturated reddish-orange color to set the vibe and warmth of the whole space. Subtle yet bright, it creates a vivid contrast with the intense yellow and sapphire blue decor in addition to adding a mysterious air of exotic romance.











我們於主臥室的部分加入了雙入口動線的設計，至衛浴、廚房都能快速地抵達，為生活創造良好的使用便利性。

Every space has multiple ways of usage such as the master bedroom conveniently having two entrances to efficiently enter the bathroom or kitchen.



和室空間則擁有多功能的使用方式，可作為書房或小孩房用途，在雙親或朋友拜訪時，亦可作為招待客房使用。

Not only can the multipurpose room be considered to use as a study or wardrobe, it can also serve as a guest room with family or friends visit.

