

The Setting of Encounter.

情境交感

台灣高雄市

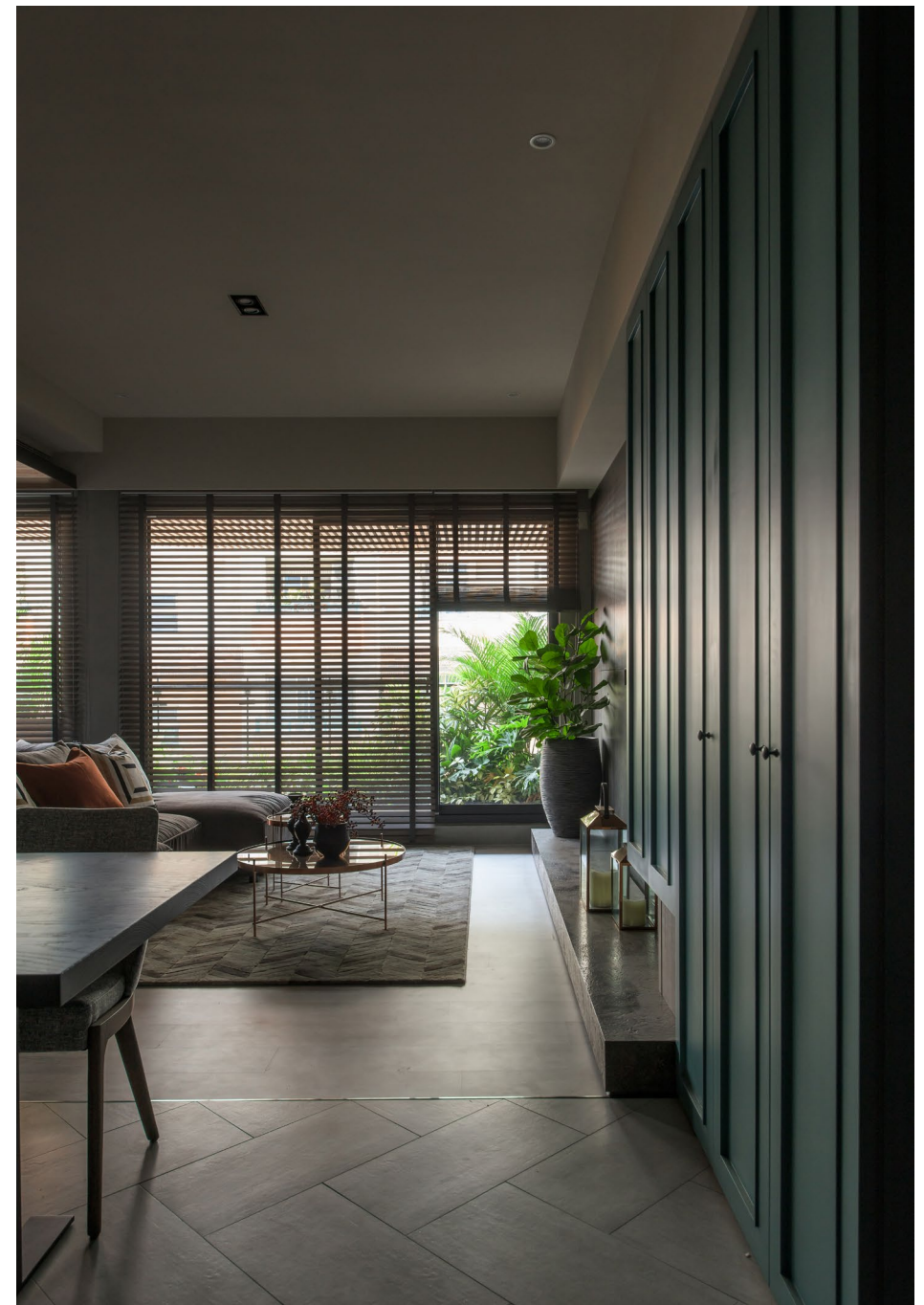
89.3 meters squares

格局：玄關、客廳、餐廳、書房、廚房、主臥室、主臥浴室、臥室 A、臥室 B、公用浴室、景觀陽台

材料：大理石、玻璃、薄板、木作、系統櫃

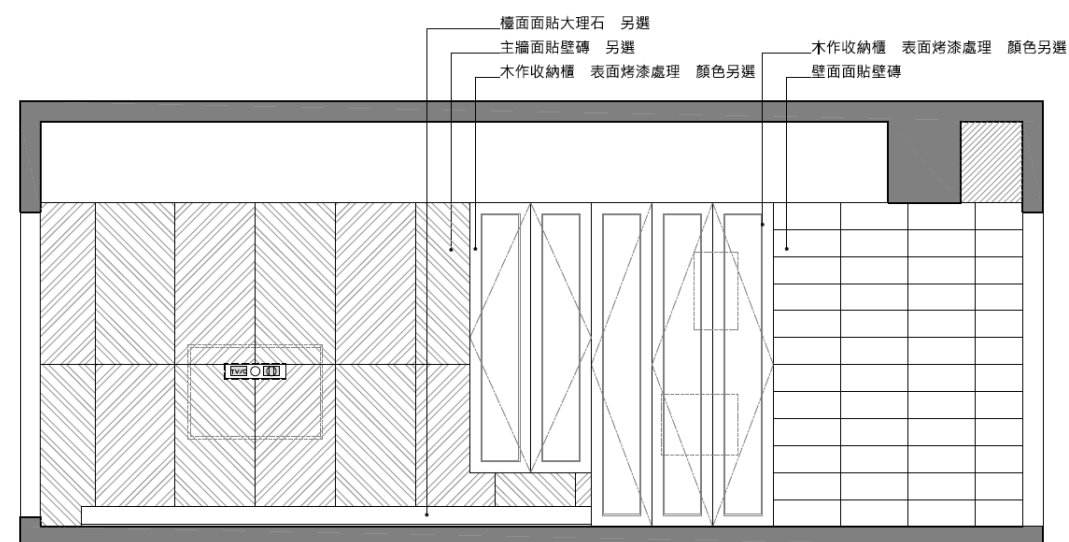
居室是一片天地，
天地是一張畫布，
在既定的緯度裡，
跳脫框架，
框架內是如常的風景，
靜定美好，
框架外則如畫意湧出，
精神與物質與附。





在小坪數中，需切割出住家功能俱全的空間，因而設計主軸是以視覺穿透感、動線明朗感、以及讓空間擁有獨特性格的色感，三者交錯，讓醞醞情境，圍塑出一個家的形與意。

The need to construct a microcosm of home out of a small place behooves the use of visual transparency, circulatory openness, and a unique sense of color as the main concepts. These interwoven themes shape the setting and enclose the form and content of the home.



**The Setting
of Encounter**

情境交感



為了讓空間保有動態感，又不表輕浮，天地壁主要以原色的木質與石材鋪述以示穩重，特別在公共空間與私密臥房間的走廊，造了一道牆門，有灰階塗料金屬的陰翳幽暗，水泥冷靜的過渡色，藍綠色拉門躍出，讓色彩擺渡在一個家的各個角落，自成一圈圈的光暈。

To maintain the dynamism of space without being frivolous, we adopt wooden and stone slabs on the main wall connecting the floor and the ceiling with a sense of stableness. A door marks the entrance to the corridor that connects the shared space and private rooms. The eerie darkness of gray paints conveys the transitory calmness of The sliding door's cyan color stands out, scattering colors around the corners of the house with its hallows.



**The Setting
of Encounter**

情境交感

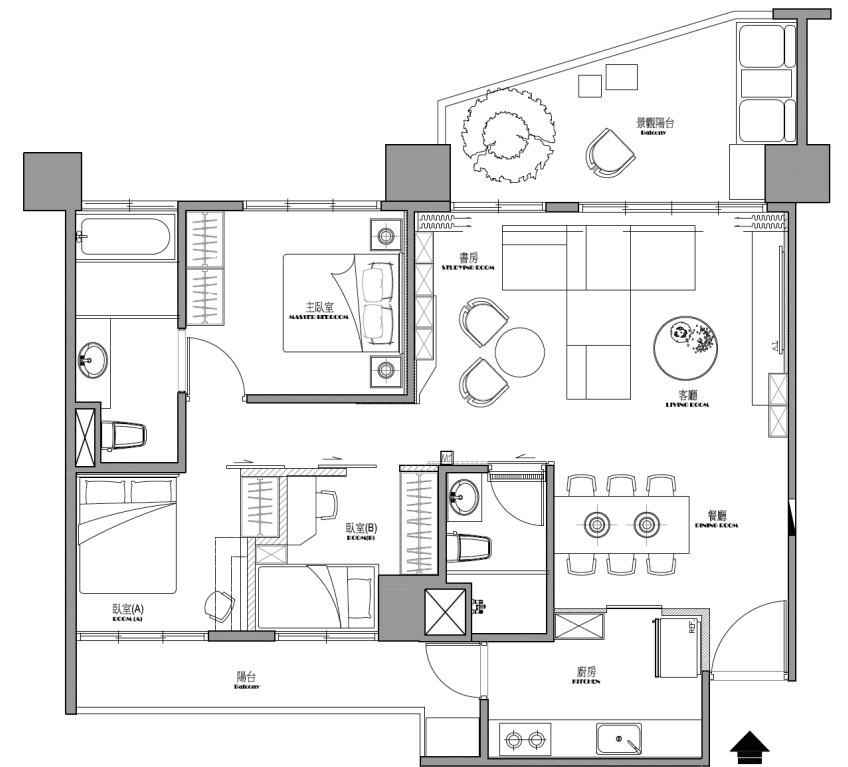


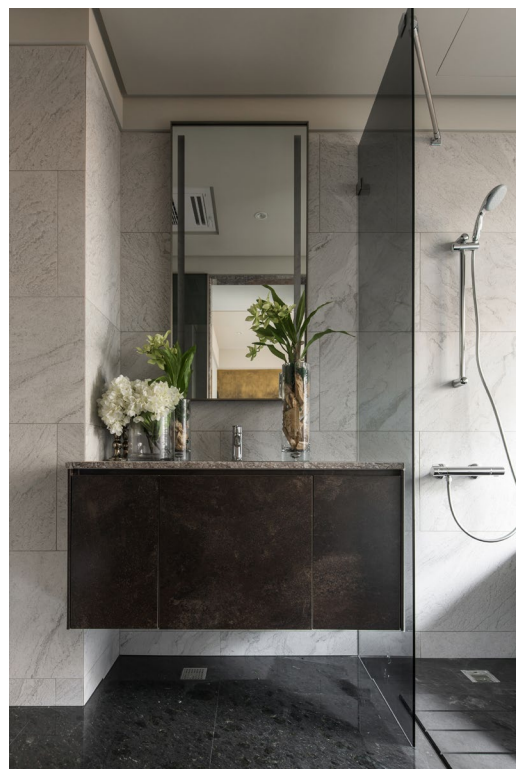
The Setting of Encounter

情境交感

客餐廳與書房之間的穿透性讓空間得以合一，除了梁的劃分，低限的家俱，也揭示了範圍，簡約的置物櫃線條。

The permeability between the living/dining area and the study room integrates the space as one. Besides the dividing lintel, minimalist furniture also reveals the boundaries.





臥室布幔的垂綴，木地板自然紋路，隱約使空間保有水平垂直的微秩序感，讓生活空間中所交織的軸線，生動而不紊亂。

A slight sense of order is maintained by the simple lines of the cupboard, the drapery of the bedroom curtains, and the woodblock's natural pattern. The interwoven axes in the living spaces are animated and yet not chaotic.

**The Setting
of Encounter**

情境交感