



樂 敲

La Chill

Design Brief

La Chill是受到20年代的美國speakeasy所啟發的復古餐酒館，同時提供給高爾夫愛好者輕鬆的聚會場所。

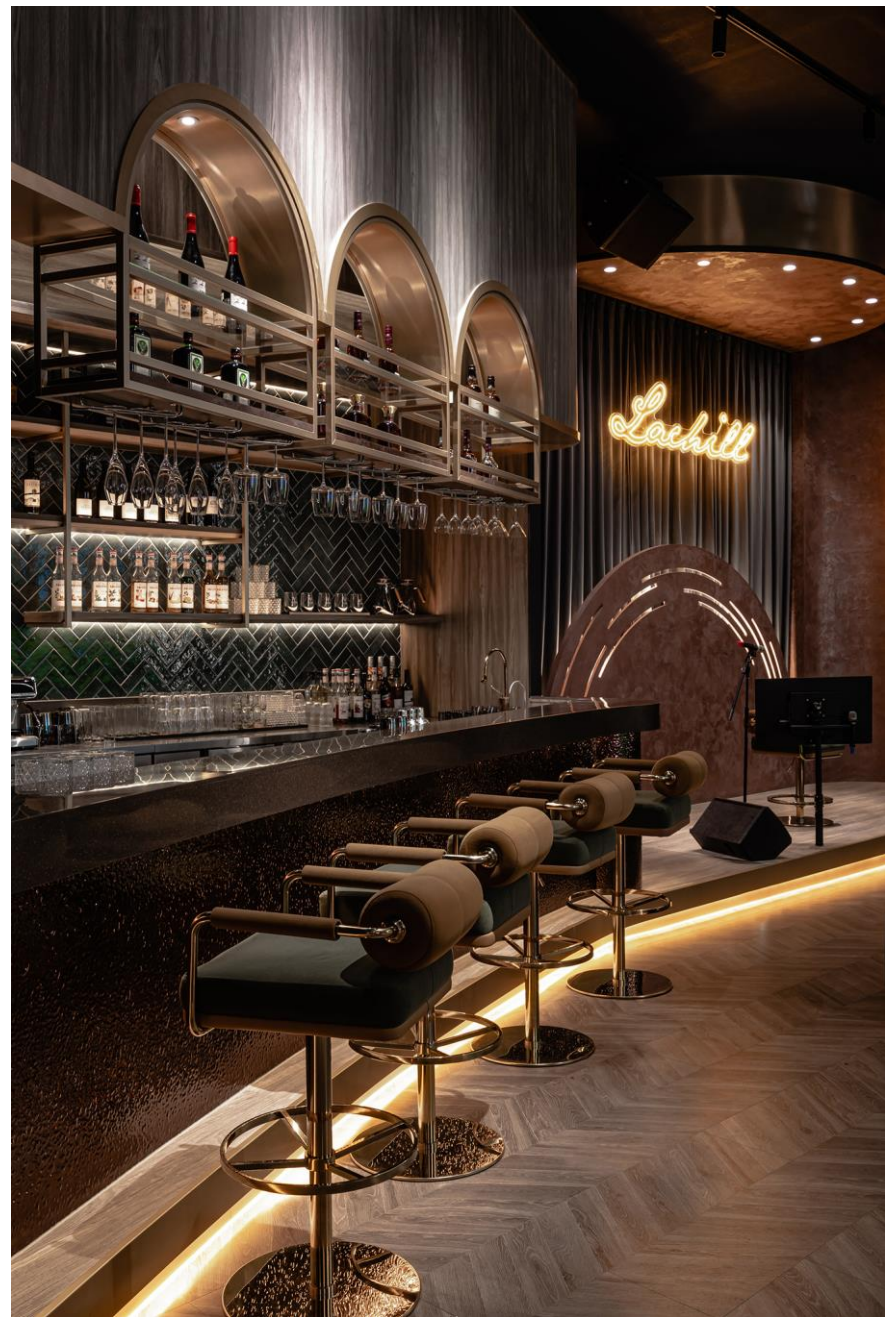
La Chill is a vintage bistro inspired by 1920s American speakeasies, offering a relaxed gathering place for golf enthusiasts.





以「老錢風」作為設計美學，塑造出有質感但不花俏的經典俱樂部感，搭配高爾夫模擬器以及現代風格的LED燈具，不但能吸引對科技有興趣的年輕人、也吸引喜歡有年紀的高爾夫老手聚餐。

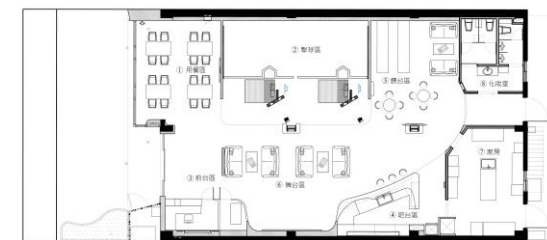
Designed with an "Old Money" aesthetic, it creates a sophisticated yet understated classic club ambiance. Featuring high-tech golf simulators and modern LED lighting, La Chill attracts both tech-savvy young people and seasoned golf veterans.





Design Challenge

因為高爾夫模擬器需要的空間大，所以限制了這間餐酒館的空間規劃。因此設計中將舞台區安排為主要VIP區，聚餐區跟休閒區則安排在兩旁。The space needed for golf simulators limits the layout. Therefore, the stage area is designated as the main VIP section, with dining and leisure areas on the sides.



一樓平面配置圖



The entrance

入口

設計中使用綠色調元素以塑造高爾夫球場的意象。

Green tones were used in the design to create the image of a golf course.

玄關的綠色元素由立面延伸至天花板，
隱喻果岭球道。

The green elements of the entrance
extend from the façade to the ceiling,
a metaphor for the green fairway.

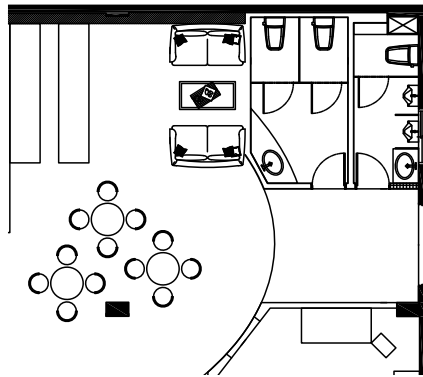




爲了增加視覺上的娛樂感，設計師將擊球區的保護墊的安排做變化，讓線條更具趣味性與科技感。

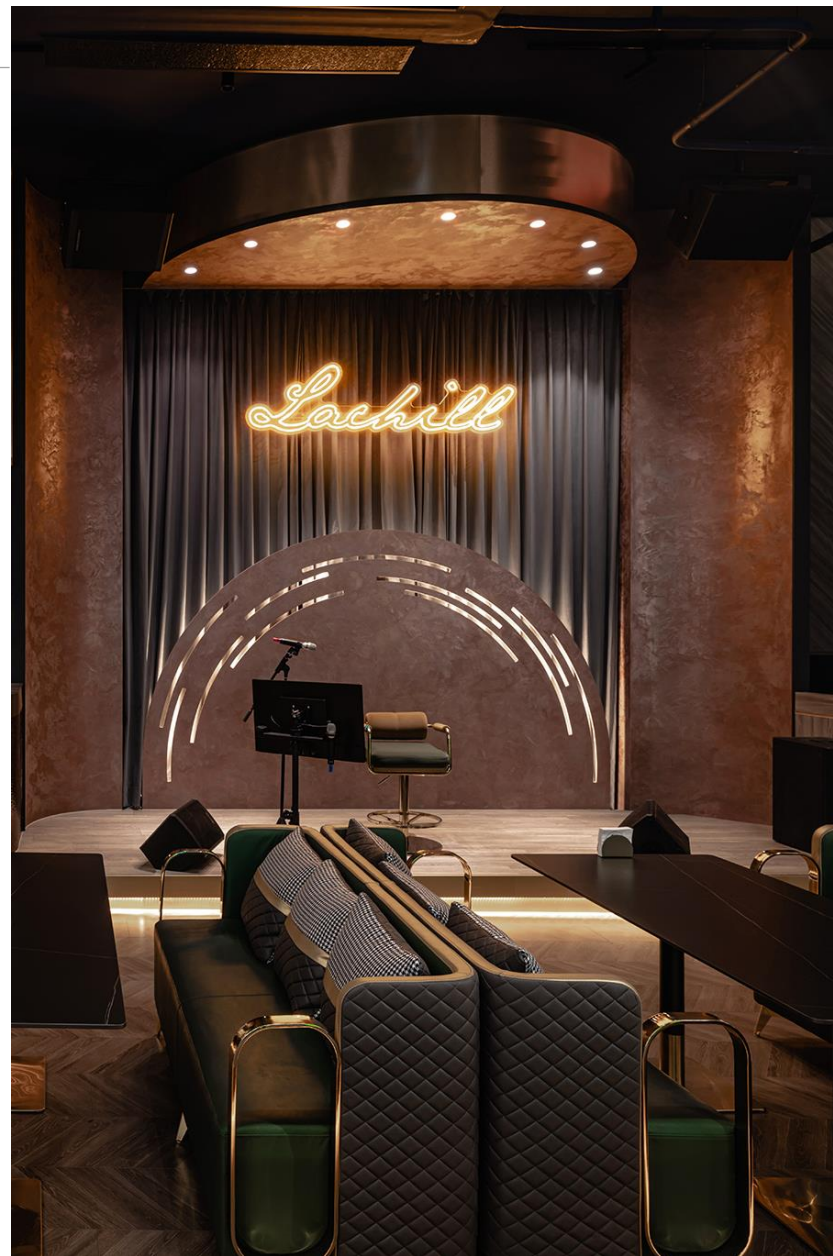
In order to increase the sense of visual entertainment, the designer changed the arrangement of the protective pads in the hitting area to make the lines more interesting and technological.

Design Concept



高爾夫球場上鮮少有直線的存在，因此設計中使用了許多的弧形要素：象徵高爾夫球飛行軌跡的弧線分割顧客區以及工作區，櫃檯上方的形狀以果嶺為靈感，舞台後方的設計則是高爾夫球飛行的速度線等等，讓高爾夫的主題細膩地存在於整個空間當中。

There are very few straight lines on the golf course, so many curved elements are used in the design: the curve that symbolizes the trajectory of the golf ball divides the customer area and the work area, the shape above the counter is inspired by the green, and the design behind the stage is the speed line of the golf ball, etc., so that the theme of golf is delicately present in the whole space.



Design Results

